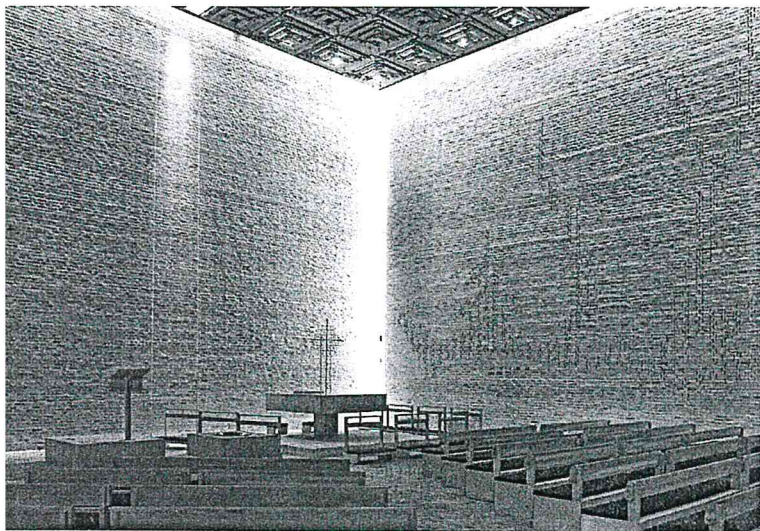


OWN HOUSE
INGER AND JOHANNES EXNER

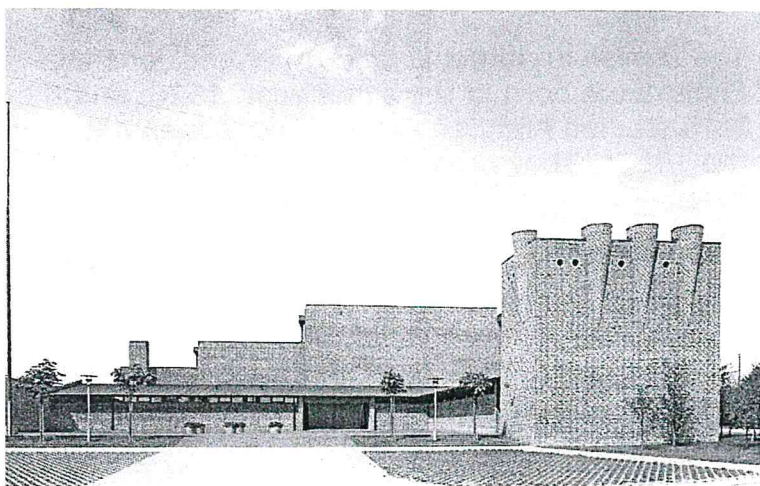
CHALMERS
NORDIC ARCHITECTURE
SPRING SEMESTER 2019

TABLE OF CONTENT

1. INGER AND JOHANNES EXNER
2. AN OWN HOUSE
3. CONCLUSION



Nørreland Church, Holstebro, 1967-69



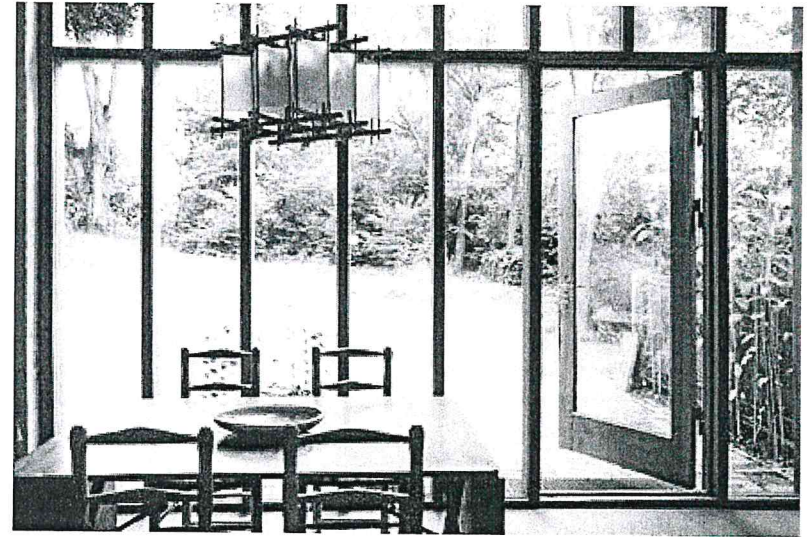
Islev church, Rødovre, 1968-69

BRICKS AND CHURCHES

The focus on the religious architecture might be initiated by Johannes's father, professor Johan Exner, who was a priest and well known as the man behind "Exner conservation", the method to prevent the damage of the church's environment by arbitrary settlements and by the owners of the lands.

Since 1965 Johannes Exner was working as a head of the restoration department at Aarhus School of Architecture where he became a professor in 1984. A large part of the work of the architect couple came to revolve around church restoration, but also around their own church design. Among the most famous ones are Nørreland church in Holstebro and Islev church in Rødovre.

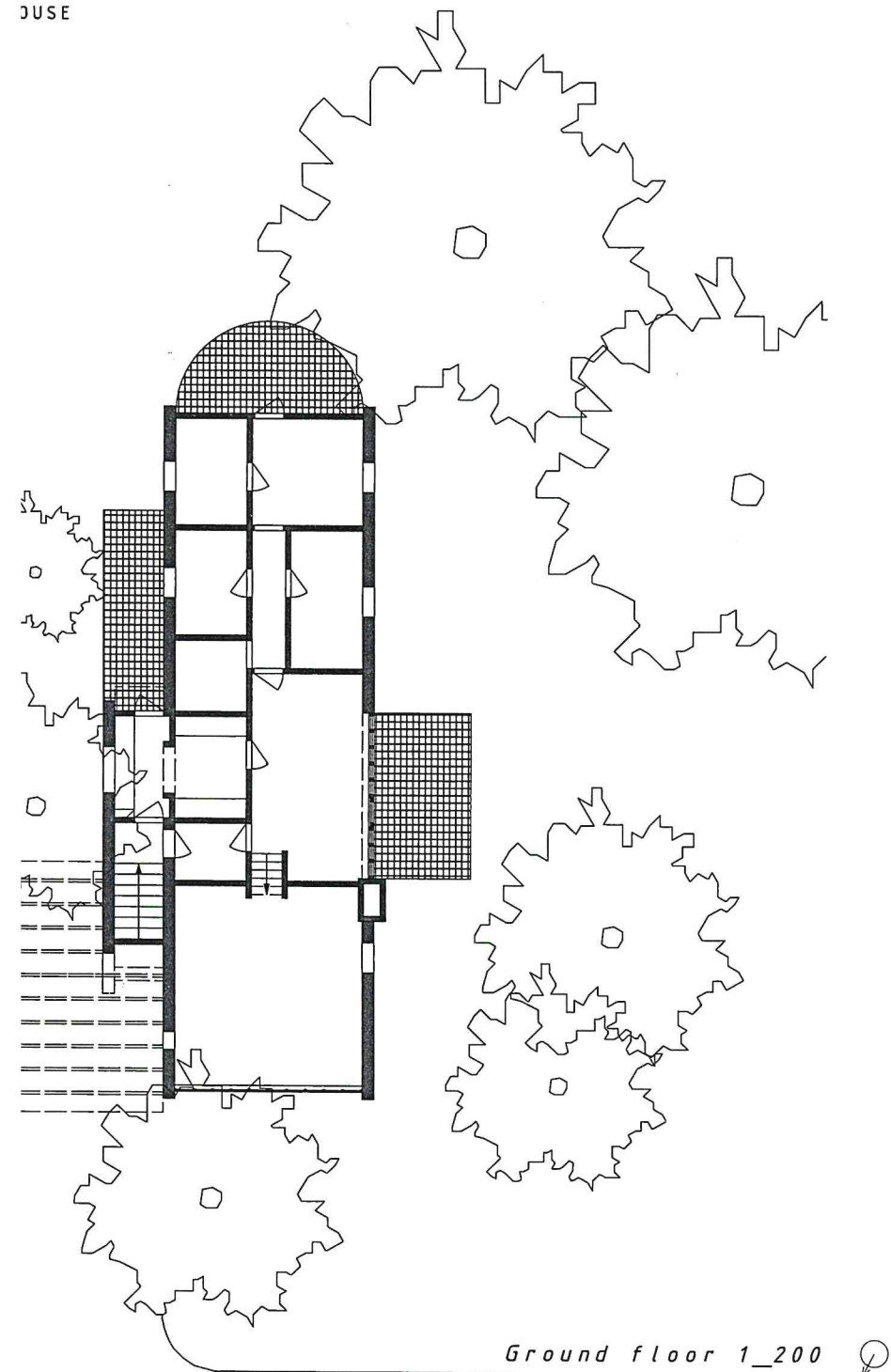
In 1983 they were both awarded the Eckersberg Medal and the Nykredit Architecture Prize in 1991 and the C. F. Hansen Medal in the following year. In 1992 they were both given Honorary Membership of the American Institute of Architects.



AN OWN HOUSE

The villa of Inger and Johannes Exner was one of their first projects as it was realized in 1960. As they both wanted to live closer to nature, they bought some land on a hillside close to an open field in Skodsborg, 20 minutes north of Copenhagen. A calm place to settle down.

The Exners themselves only lived in the house for five years, but the villa is often called a new chapter in Danish architecture as one of the first detached houses that later would become a trend in the 1970's in Denmark.



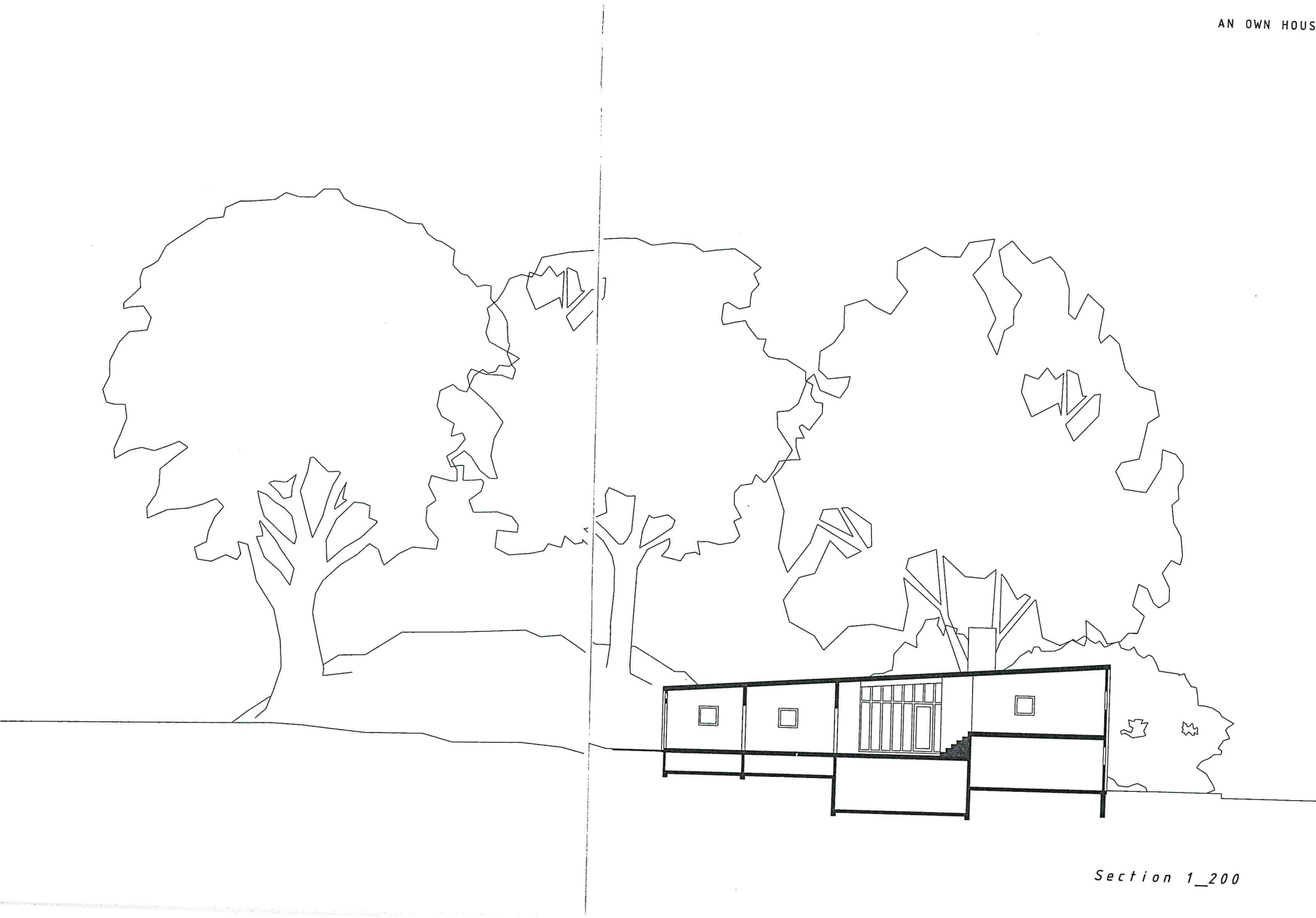
Ground floor 1_200

SHAPED BY NATURE

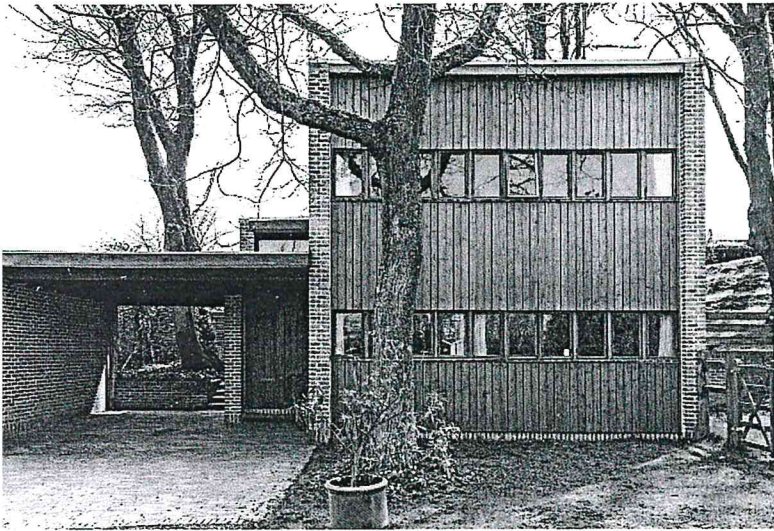
Since the hill and trees on the site needed to remain untouched, the house was given a shape of a long stretched wedge that is smoothly fitted in the hillside among the tree trunks. The trees themselves act as space shaping elements in the outside areas, that together with three patios on each side of the building creates calm outdoor spaces for recreation in the nature.

ORGANIZATION

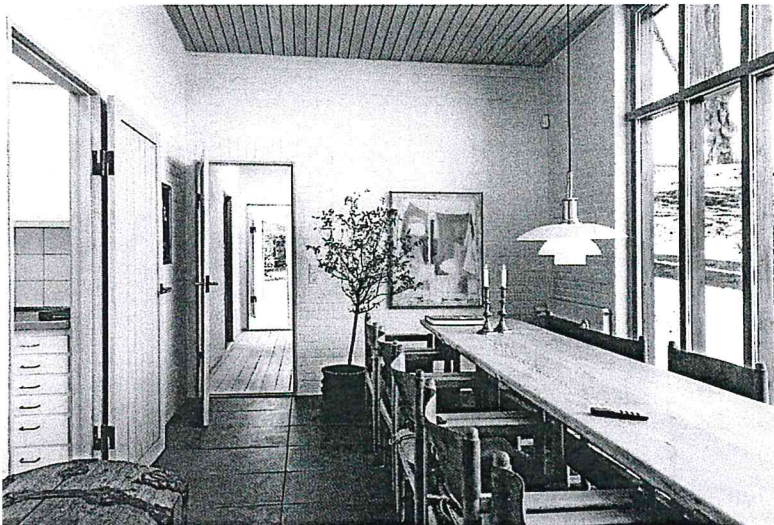
The house has 159 square metres of floor space over three levels, following the contours of the plot. The house is organised around two axes - one passing lengthways through the house via the central living room and bedroom wing, and one at right-angles, connecting the central room with the kitchen and utility room. The axes are stretching between windows or glass doors towards the greenery outside.



Section 1_200



View from the street



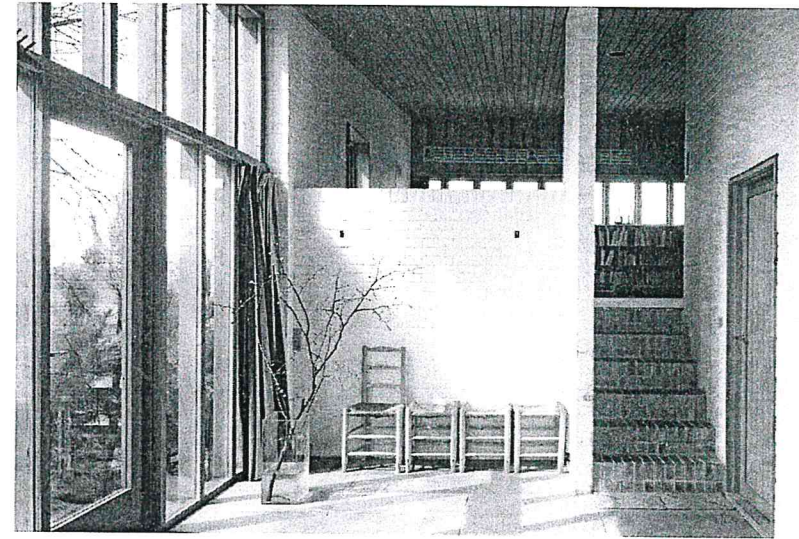
Dining room interior

IN LEVEL WITH THE LANDSCAPE

At the high end of the house, towards the road, there are two storeys, originally providing space for a small studio at ground level, while using the falling ground to create a bright and high-ceilinged dining room in the heart of the home, with an open connection to a raised living room facing the street one level up.

TRADITIONAL MATERIALS

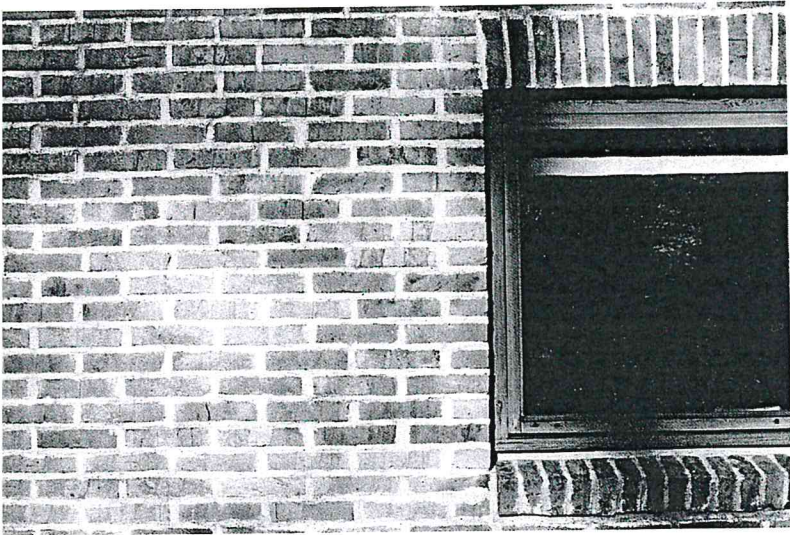
The villa was built with a consistent use of a few selected materials: traditional Danish brick, stone and wood. Heavy brick walls shape the load bearing elements in one direction, while the walls perpendicular is kept light in wood. The appearance of the exterior is a warm building with earth colored tones that is closely related to the colors of the surrounding landscape. The interior brick walls are painted white and kept more abstract, as if to direct the attention to the colors outside of the windows.



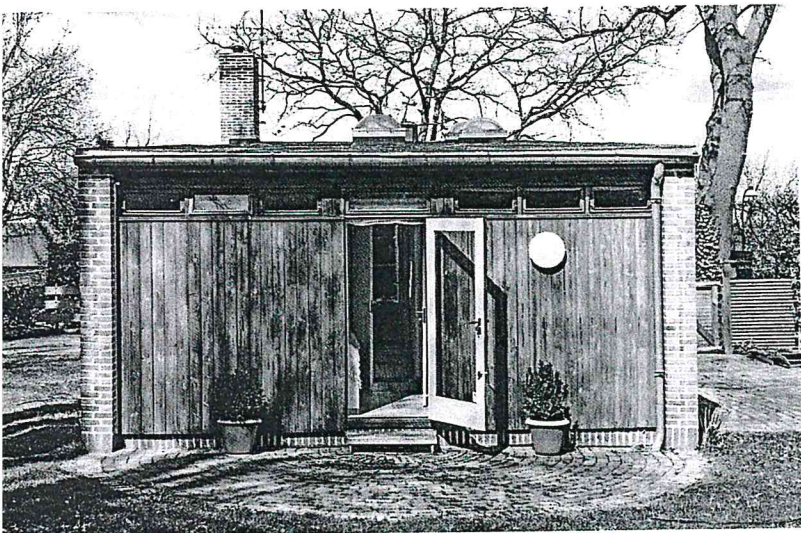
CONCLUSION

We were fortunate enough to visit the house that is about 20 km north from Copenhagen. The impression of the neighborhood, that is situated near the coast, is inviting and homely. The house itself is surrounded by other villas in the same scale that create a little eclectic yet well-fitted environment.

The conclusions from our visit and our research is now transferred into a physical model of the villa, where we focus to tell the story of the most important concepts of the building.



Window detail



View from the back garden

THE MATERIALITY

Simplicity and a limited range of materials create a strong yet calm image, and more effort has been put down in individual details. Yellow brick compiled with wood makes a house warm and inviting.

THE NATURE

The building is strongly connected to nature. The site is filled with trees and bushes that cover a big part of the garden alongside the house. This creates intimate outside spaces and hides the terrace from the street. The house is perfectly fitted in the terrain and interacts in an interesting way with its' surroundings.

THE SCALE

The horizontal design and the situation of the building makes the house look smaller than it actually is. However, the house also has a strong vertical height that is hard to notice at first sight. The front elevation, even though it is the tallest point of the building and the most frontal one, keeps the human scale and does not create an overwhelming feeling as you approach.