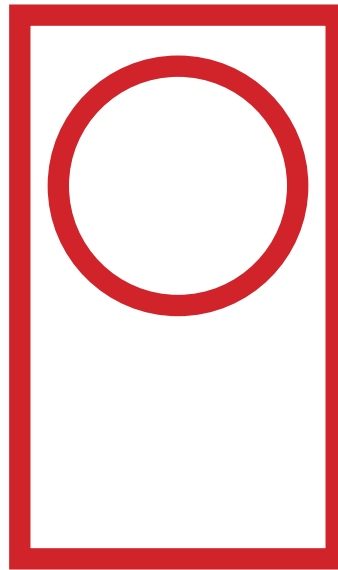


ALVAR AALTO



TYÖVÄENTALO

Markus Lauri Andersson
Nils Bagge
Linda Matsuhashi
Elias Odsvik
Philip Rosdahl
Simeng Wang

p.4 labour movement

p.7 alvar aalto

p.9 alvar aalto p.10-11 study trip

p.12-13 main model

p.14-15 interior model

p.16-17 concept model p.18-19 sources

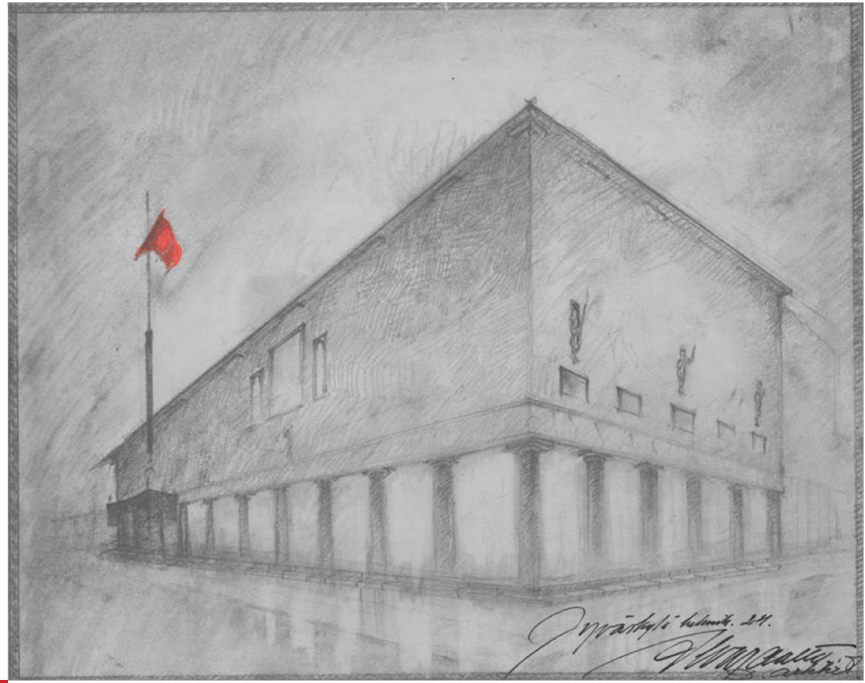


The Finnish labour movement, closely tied to the concept of the työväentalo (workers' hall), emerged in the late 19th century to advocate for workers' rights and social reforms. It served as a vital community hub for political organizing, education, and cultural activities, strengthening the movement. Despite setbacks like the 1918 Civil War, the movement helped build Finland's welfare state, securing fair wages and workers' rights.

“TYÖVÄKI YHTYKÄÄ!”

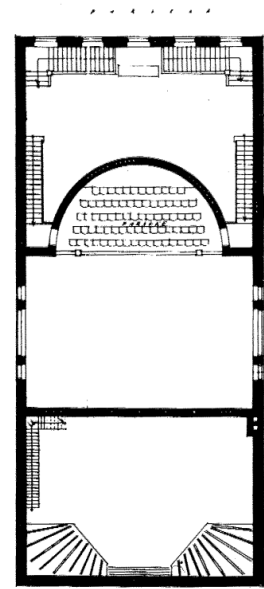
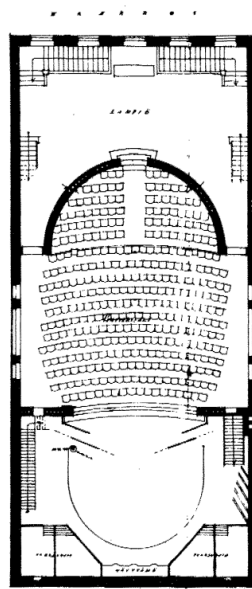
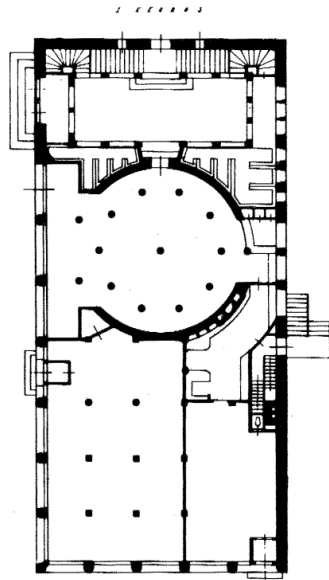
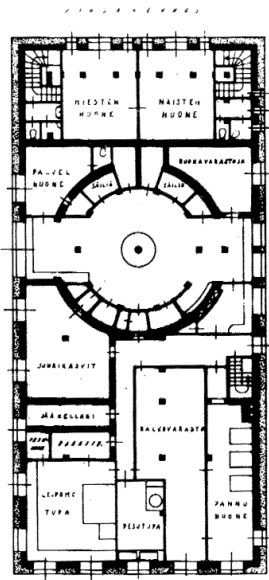


“WORKERS, UNITE!”



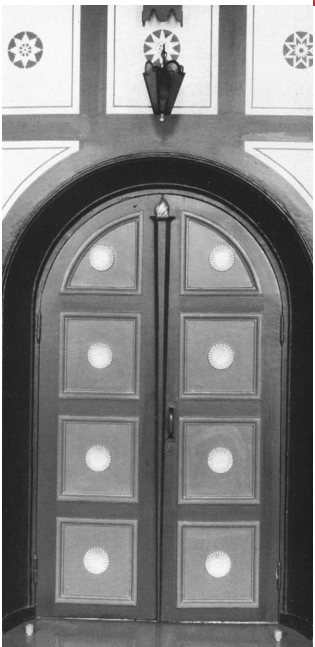
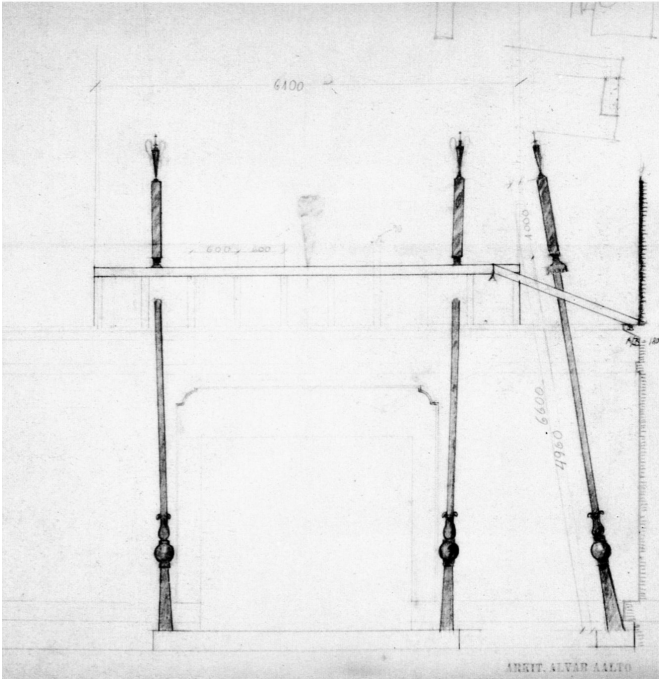
■ Alvar Aalto, one of Finland's most renowned architects, designed the Jyväskylän Työväentalo in 1924 as a hub for the local labour movement. Reflecting his early Nordic Classicism, the building served as a gathering place for workers, hosting political meetings, cultural events, and educational activities. The building was designed together with his wife Aino Aalto, who was involved with the interior.

Over time, as Aalto's architectural style evolved towards modernism, so did the role of the worker's hall in Finnish society. Today, the Jyväskylä worker's hall continues to function as a cultural and community space, preserving its historical significance while adapting to contemporary civic and social needs. The restaurant in the groundfloor has been converted into a popular nightclub.

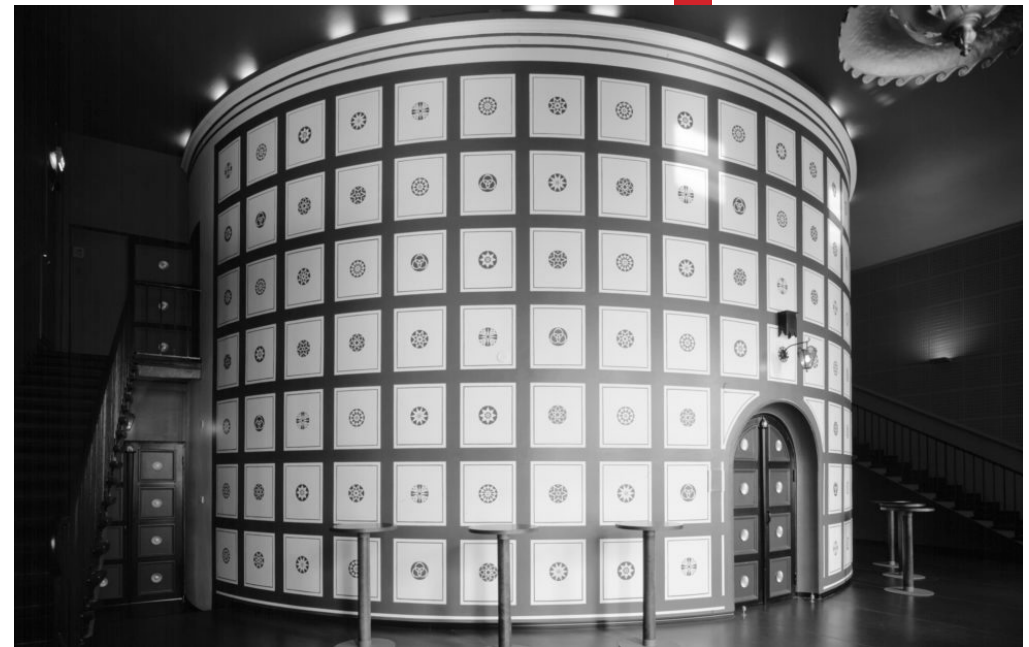


Handwritten notes in Finnish, including a signature and a date.

Handwritten notes in Finnish, including a signature and a date.



The building features a central auditorium with a balcony and a spacious entrance lobby, with a restaurant on the ground floor. Aalto's design emphasizes clear circulation, natural light, symmetry and balanced proportions. Though later altered, it remains a key example of his early architectural approach.





House of Possibilities - Hisings Backa
1924



Karl Johan School - Majorna
1925

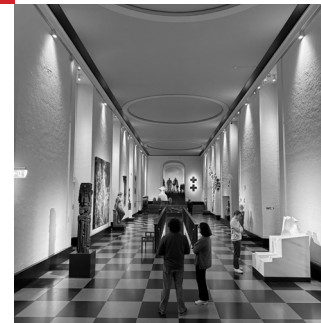


Folkets Hus - Järntorget
1947-55

Gothenburg Concert Hall
1935

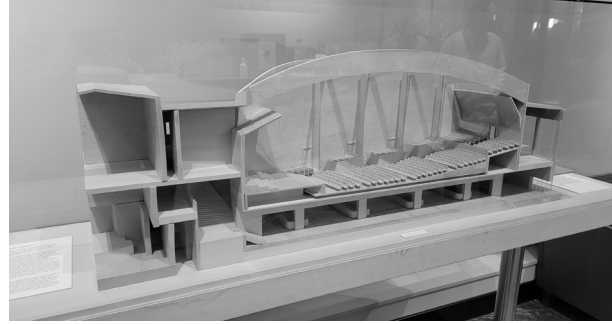


Gothenburg Art Museum
1923





M A I N M O D E L



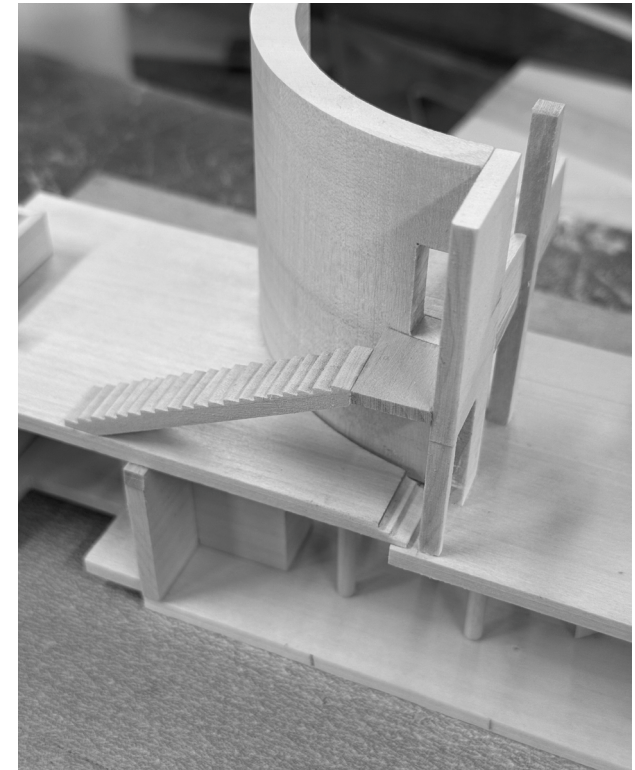
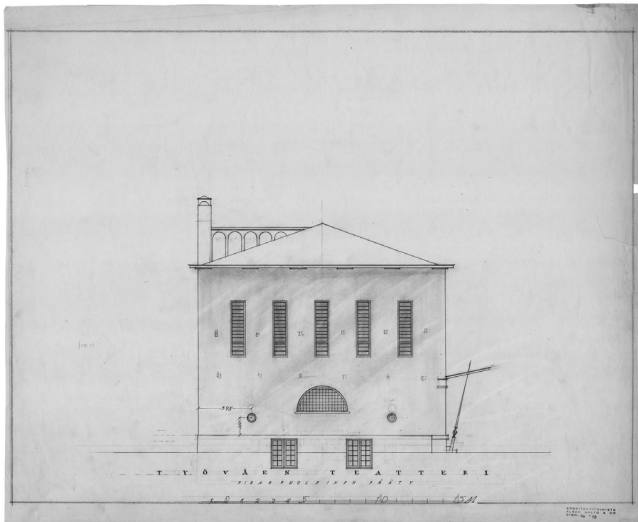
During our study trip we went to the Gothenburg Concert hall. In the foyer was an intricate wooden model, it became an inspiration for our work.

Crafted with a section cut through the center of the shortside. With the help of a mirror the illusion of complete symmetrical building is made.

With the help of old drawings we constructed a 3d model that was detrimental in getting all the right proportions and measurements for the final model.

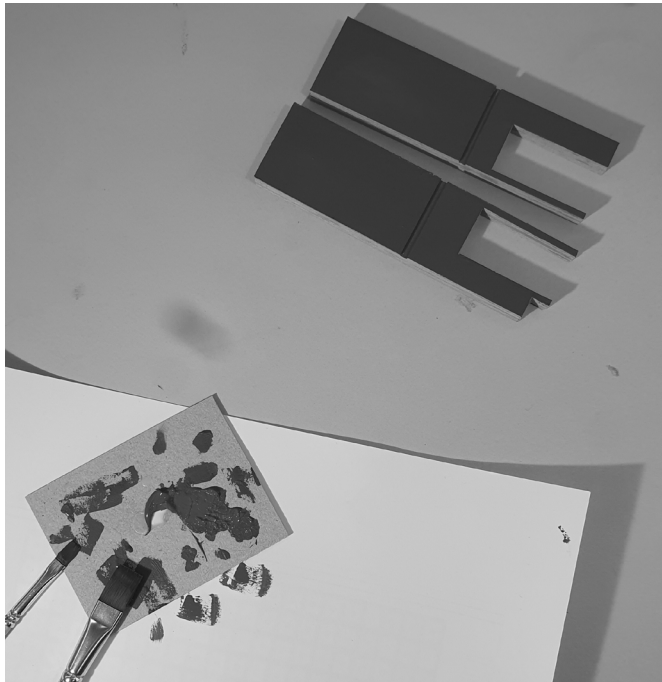
Material: Birch, linden, plywood.

■ Scale 1:100





INTERIOR MODEL



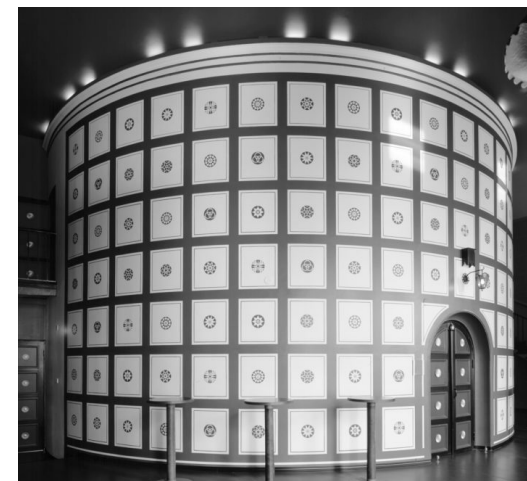
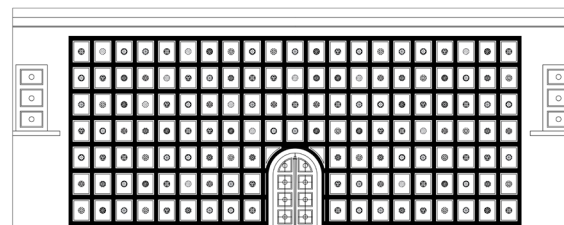
We chose to highlight the unique and grand entrance to the auditorium. The cylinder with its intricate pattern and symbols. The final transition before getting entry to the innermost space.

The interior model serves as a complementary to the minimalist expression of the main model. Here focus lies on the color, the textures and the sheer detailing of the cylinder itself.

Made through designing each individual symbol to foam cutting the circular shape.

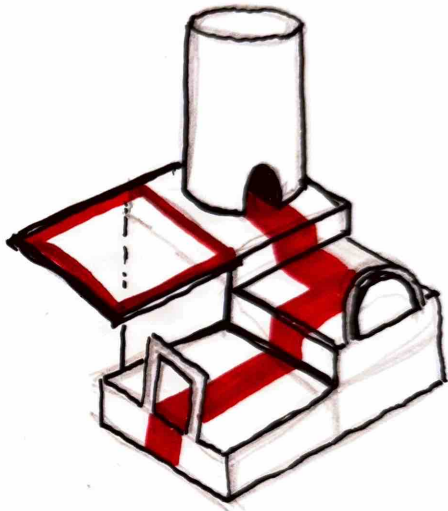
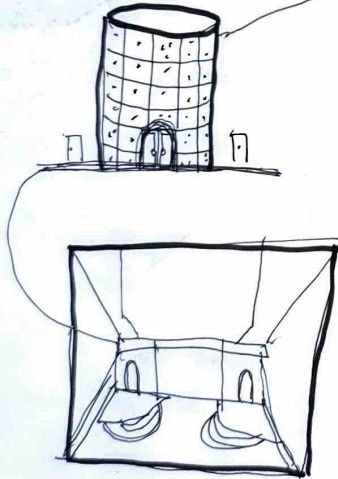
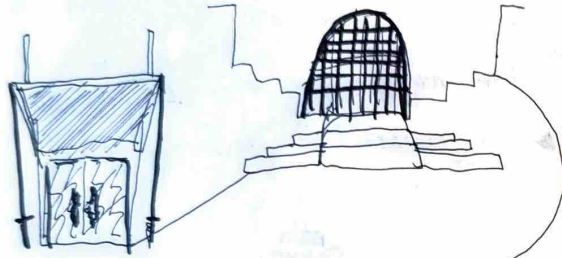
Material: Cardboard, acrylic plastic, paper, plywood, acrylic paint, foam.

■ Scale 1:50





CONCEPT MODEL

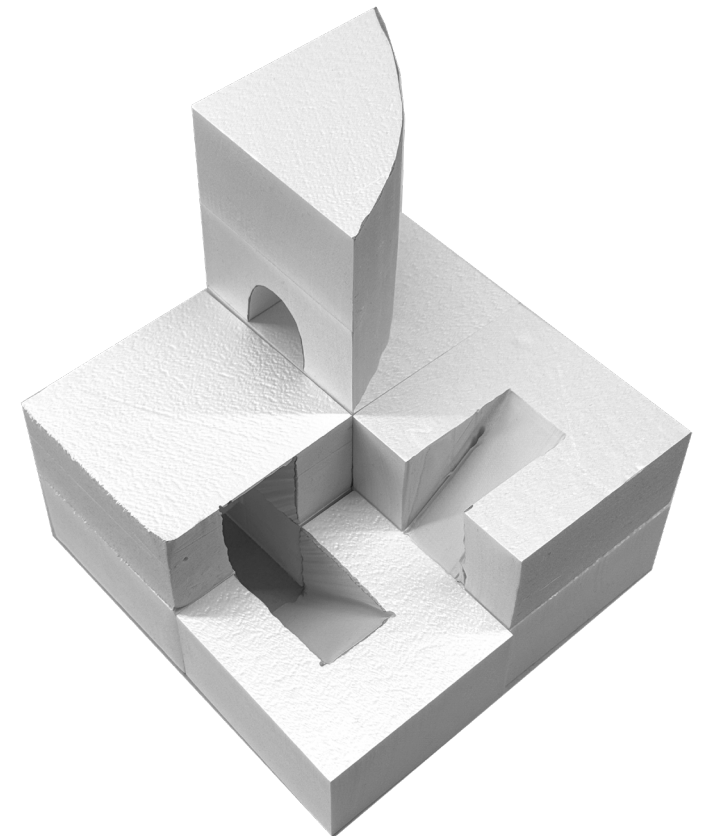
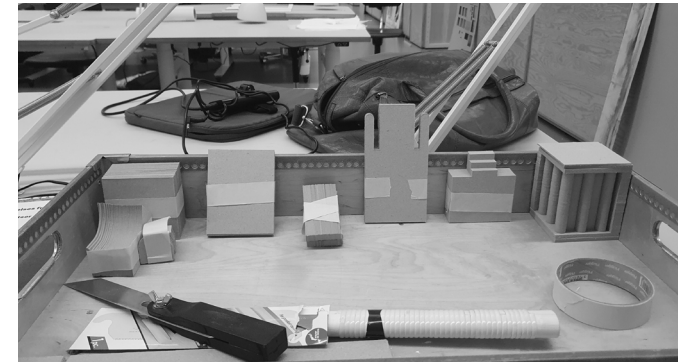


We have tried to convey our interpretation of Työväentalo and its levels with their different spatial characteristics through a sequence of spaces.

The red ribbon is there not only to symbolize the path, the red thread or the journey. But also the movement as a whole. What the foundation of the building is about and the history that lies within. The pieces are moveable but the original path stays the same. Is there a concept like a workers hall today? Or is it just a remnant from the past?

Material: cardboard, glue, red textile ribbon, steel wire.

■ Scale N/A



sources

■ <https://www.peoplespolicyproject.org/2024/02/21/understanding-labor-unions-in-finland/of>

■ <https://visit.alvaraalto.fi/en/destinations/jyvaskyla-workers-club/>

■ <http://aaltosali.fi/esimerkkisivu/>

■ Finne, N. C. (1992). *The Workers' Club of 1924 by Alvar Aalto: The Importance of Beginnings*. *Perspecta*, 27, 53–75. <https://doi.org/10.2307/1567176>

