



# ARCHSE

BACHELOR'S THESIS IN ARCHITECTURE

ELLA GEIJER

2024

SITE ANALYSIS



SITE



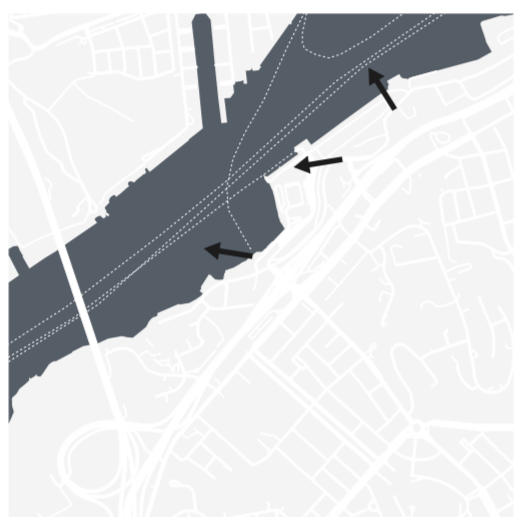
BUILDINGS



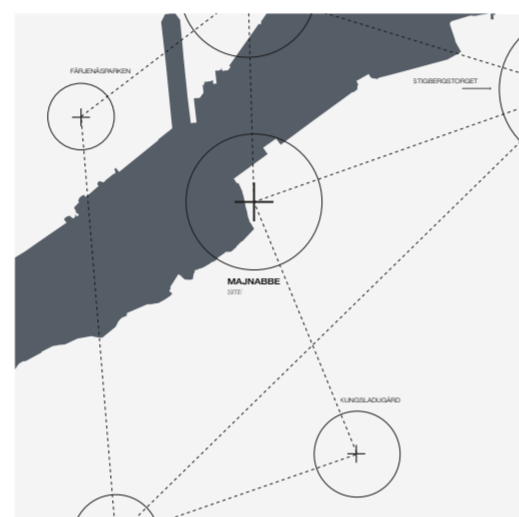
ROADS



GREEN SPACES



VIEWS



CONNECTIONS

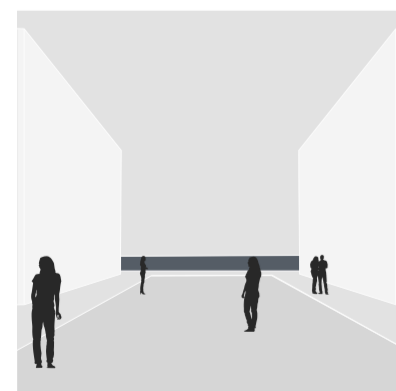
Gothenburg is a city experiencing an identity crisis. While the notion of Gothenburg as a port city persists, the growing aspiration to transform it into a metropolis complicates this vision.

The project area represents a clear transition between the old and new Gothenburg, with the most central movement starting from Kungsladugårdand leading towards the view of Karlartorner.

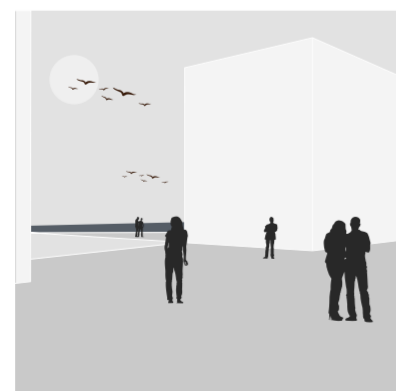
It is evident that any transformation here must support Gothenburg's search for identity. The challenge lies in intergrating human presence with the city's large-scale development. Thus, the project must draw strength from Gothenburg's primary quality: water.

A strive for proximity to and accessibility of the river is the foundation of the project's concept centered around enabling human engagement with the river, akin to an archipelagic oasis, stimulating all sensory faculties.

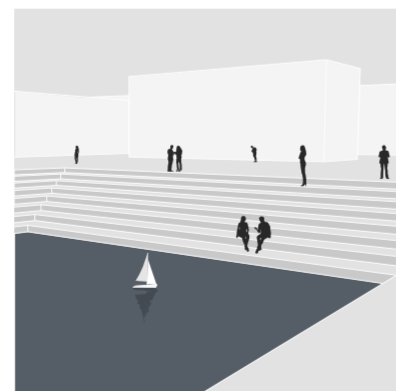
CONCEPT



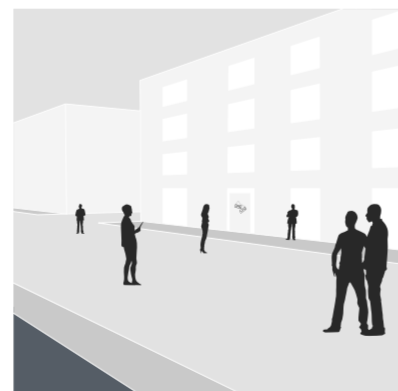
WATER IN VIEW



SOUND OF WAVES



FEEL OF ARCHIPELAGO



TASTE THE SEA

Design a masterplan in a way that allows the visitor to always have a view of the sea, and by that strengthen the relation between visitor and Gothenburg.

Reduce the noise created by traffic by redesigning the way of movement throughout the area, allowing the sound of the waves to fill its surroundings.

Place structures and public spaces near the water and let the built area follow the natural height difference, in order to make the site an oasis in the city.

Make space for small businesses and restaurants close to the river and plan for a pedestrian pathway that activates these. By doing so, creating a vibrant area.

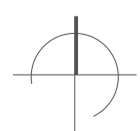
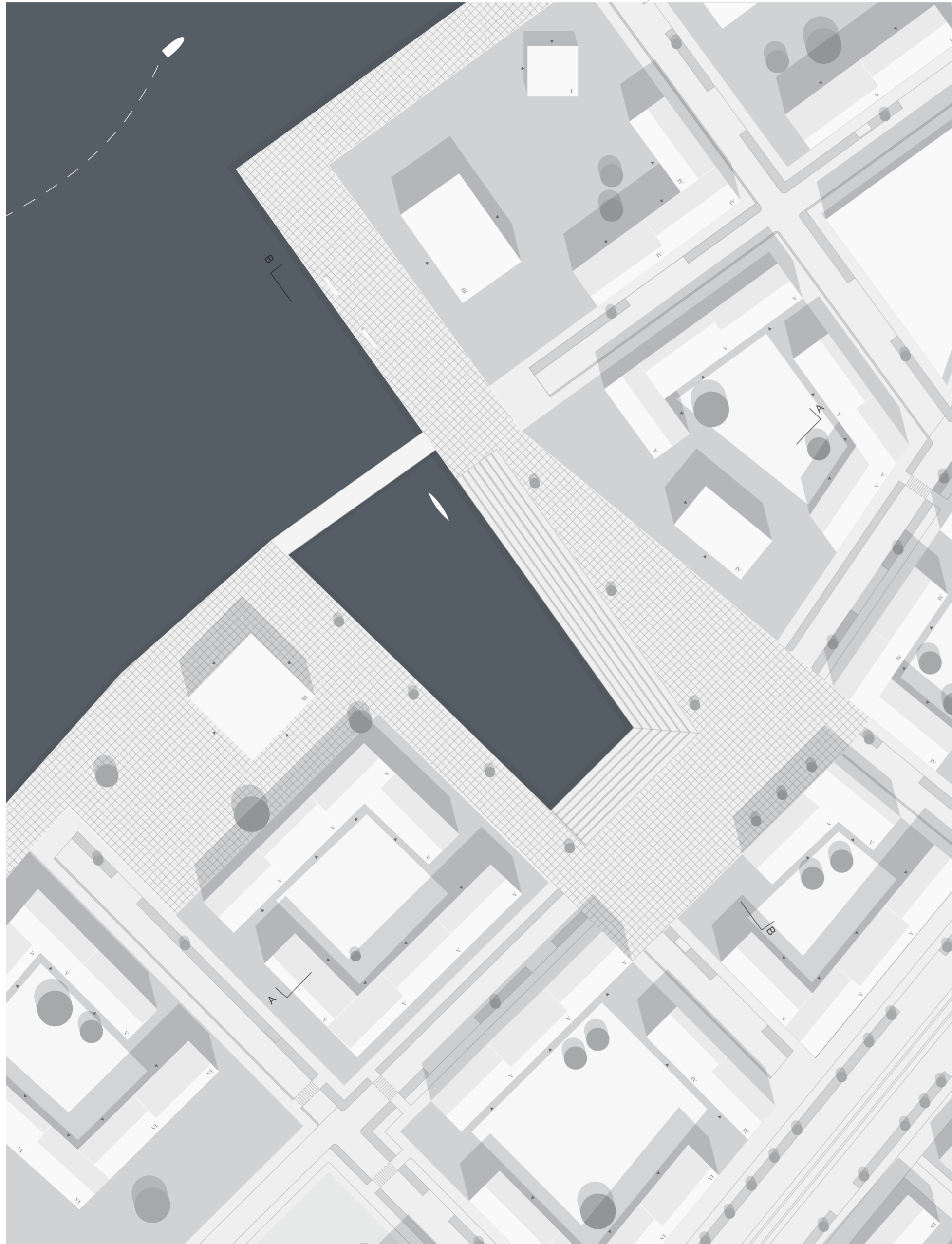
MASTERPLAN



1:4000 (A1)  
0 200 (m)



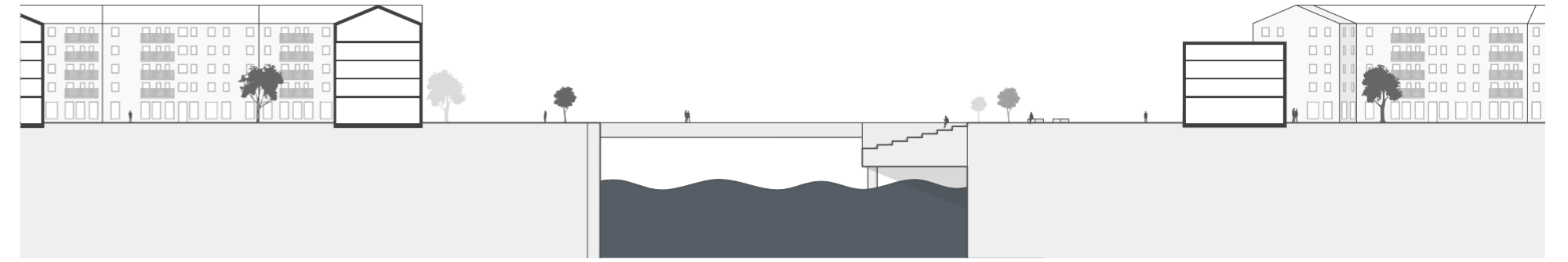
### SITE LAYOUT PLAN



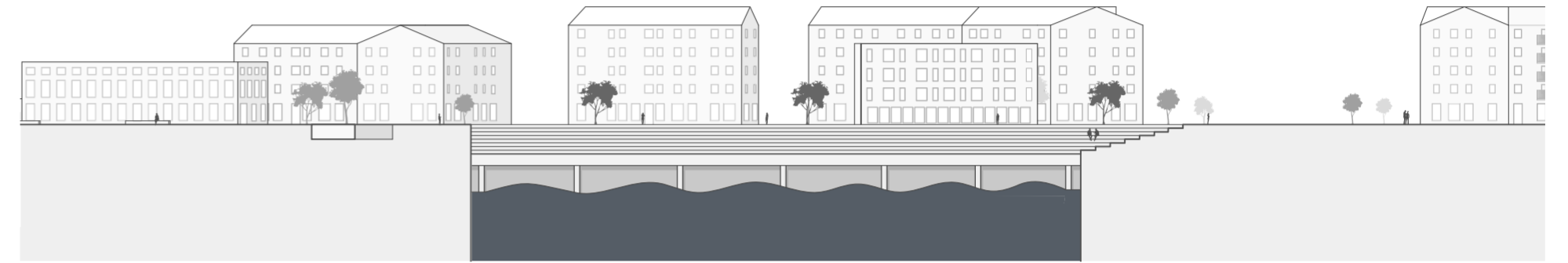
1:1000 (A1)



### SECTIONS



SECTION A-A

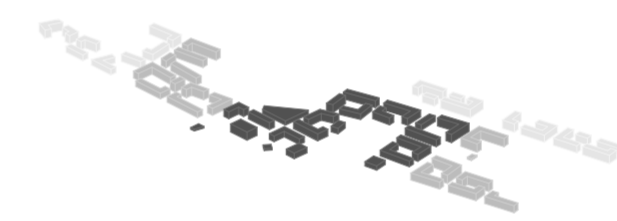


SECTION B-B

1:400 (A1)



### PHASES



1



Oscarsleden is transformed into a city street with tram traffic, while the harbor undergoes changes to include a water inlet and initiate Älvstråket. Residential and commercial units are built around the water inlet, and a boat traffic terminal is added.

2

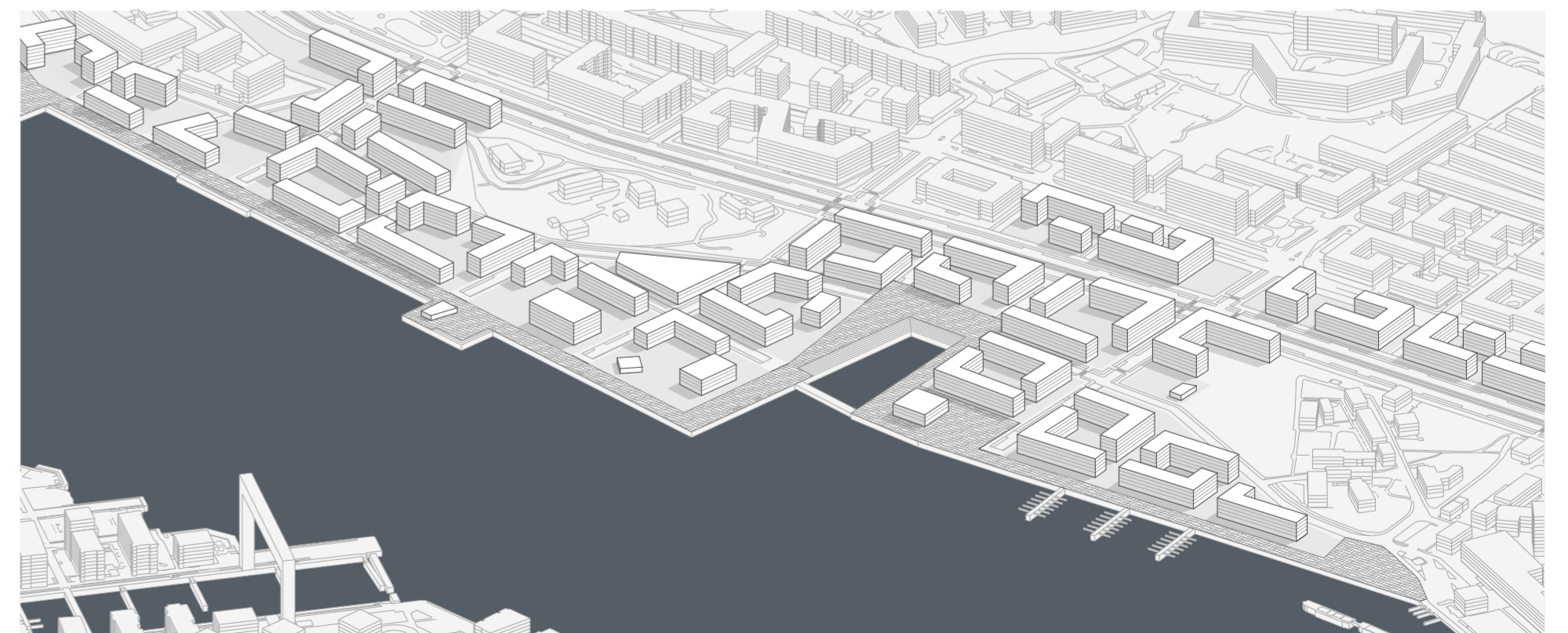


Älvstråket is completed, and more residential blocks and commercial areas are added along it. This creates a contiguous waterfront promenade and enhances the quality of life in the area.

3



The northern stretch of the city street is enclosed, while Älvstråket extends towards Gothenburg's city center. This creates a strong connection between the area and the central parts of the city, promoting a more integrated and sustainable urban environment.



AXONOMETRIC DIAGRAM



VIEW OF INNER COURTYARD



VIEW OF ÄLVSTRÅKET

Älvhamnen stands as a testament to comprehensive urban planning, where each element is thoughtfully considered to cultivate vibrant and sustainable living environments. By prioritizing pedestrian-friendly design and integrating seamlessly with the waterfront, it not only enhances the quality of life for residents but also fosters a sense of community and connection with the city's historical and cultural fabric.

Moreover, this project signifies a significant milestone in Gothenburg's urban development trajectory, serving as a beacon of innovation and setting a new standard for

future endeavors. Recognizing the need to integrate human presence with large-scale development, the project draws strength from Gothenburg's primary quality: water.

In essence, Älvhamnen emerges as a model for 21st-century urban living, where sustainability, accessibility, and aesthetic appeal converge to create a dynamic and thriving neighborhood. As such, it not only contributes to Gothenburg's urban progression but also serves as a guiding light for future urban development initiatives across the city.



## QUAVIRA

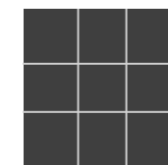
### PROPOSAL FOR LIBRARY

Quavira serves as both a symbol of urban development and architectural innovation, extending the concept of Archse with a unique emphasis on human sensory experience. This concept is reflected in Quavira's square shape and fluid spatial design.

Guided by sightlines through dynamic spaces, Quavira offers a tranquil oasis amidst the urban pulse. Importance of the visual movement has also contributed to the design of the light core, paying homage to auditory senses.

Every aspect of Quavira is meticulously crafted, with a strong emphasis on timber as both an exterior material and interior aesthetic. This seamless connection between material and rhythm enhances the sensory experience.

The vision of Quavira is to strengthen the concept of Archse and to evoke a curiosity within each visitor. The proposal is meant to captivate and set a path on a journey through sight, sound, touch, smell and taste.



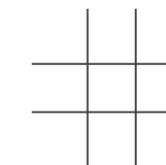
SIGHT AND MOVEMENT

Sightlines shape form and guide movement through the building.



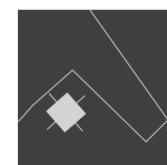
SOUND BY SPACE

Plan layout dictated by a core of quiet space.



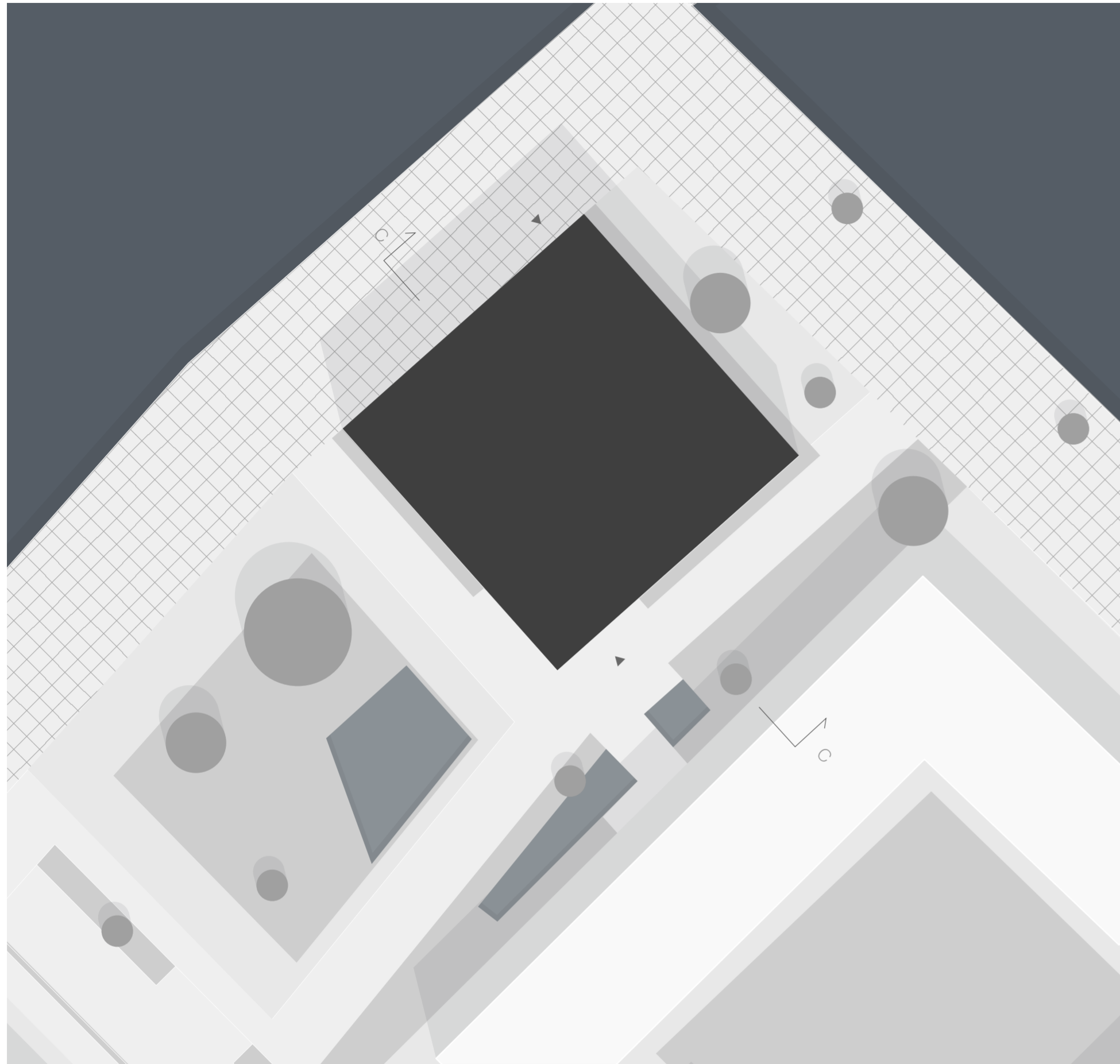
MATERIAL AND RYTHM

Highlighting material in a grid pattern and by that build rhythm.

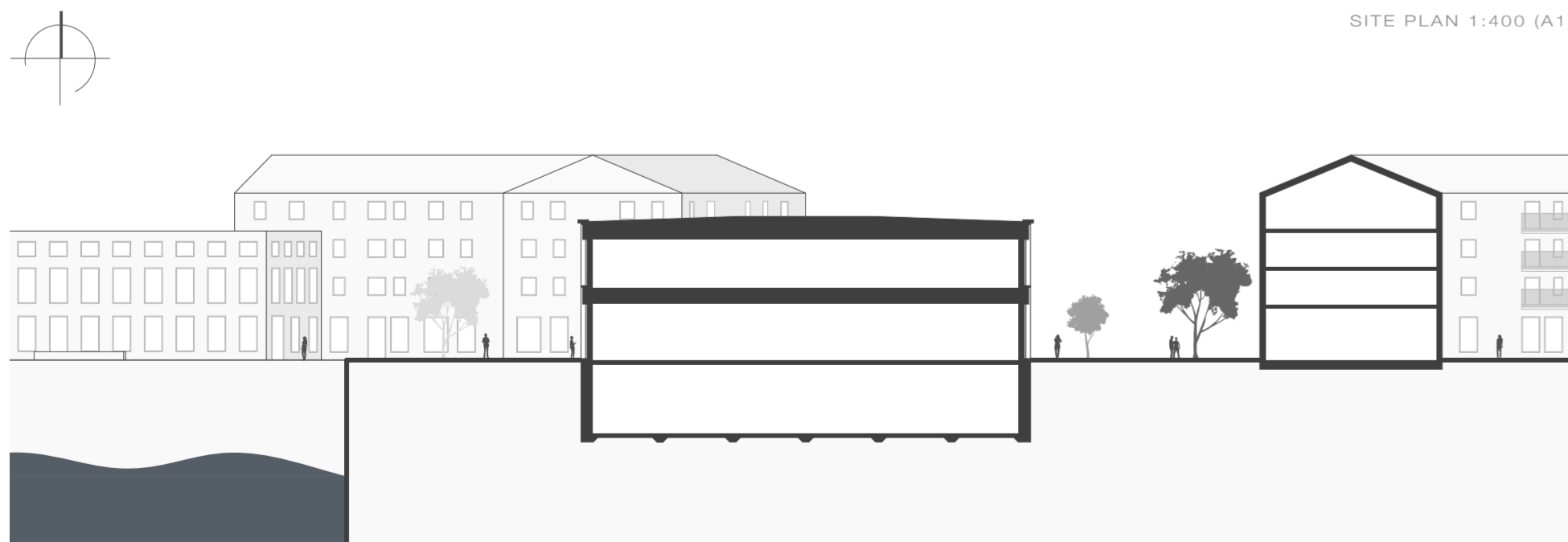


IMPLEMENTATION OF URBAN DESIGN

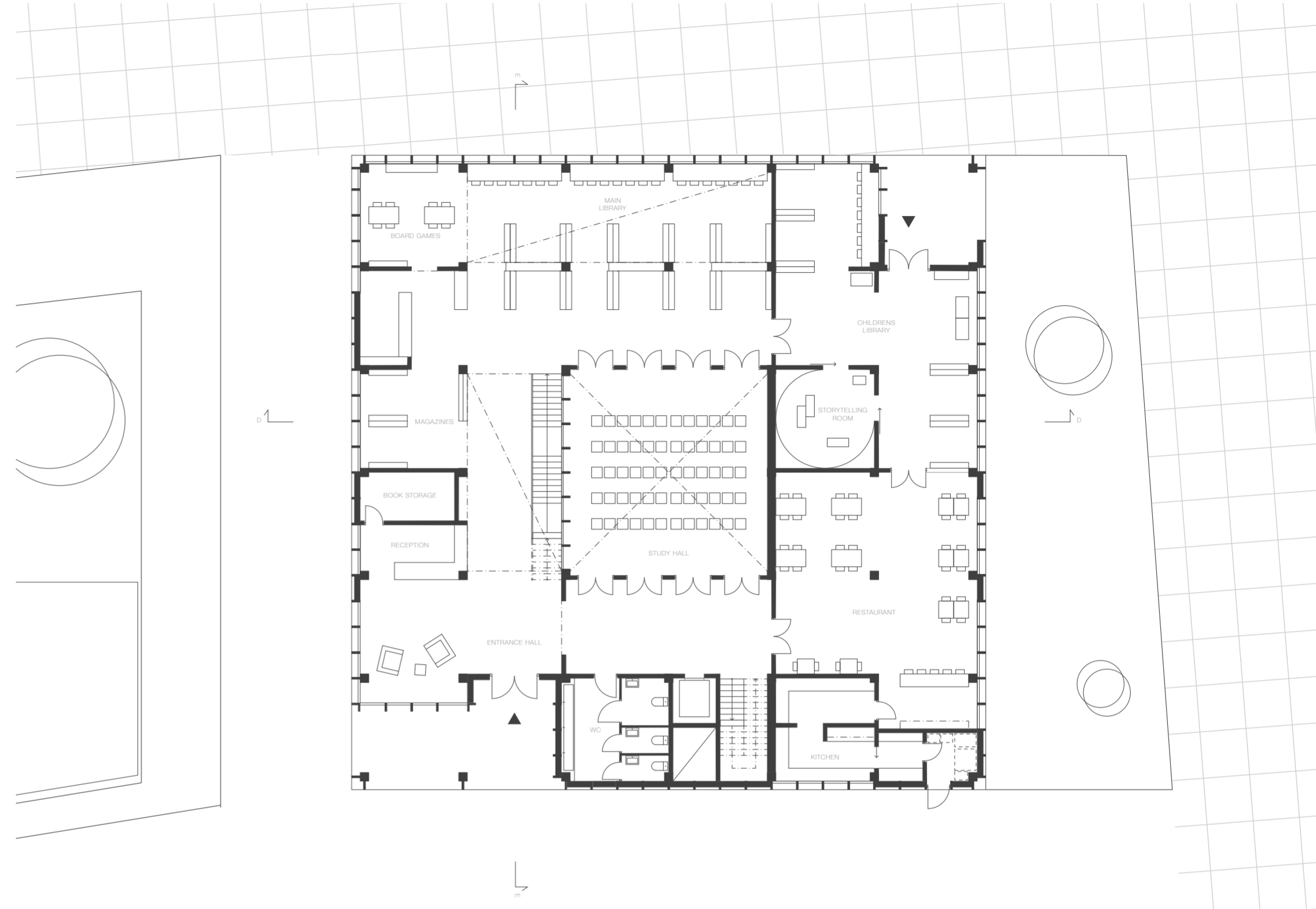
Elongate concept of urban design by adding a restaurant near water.



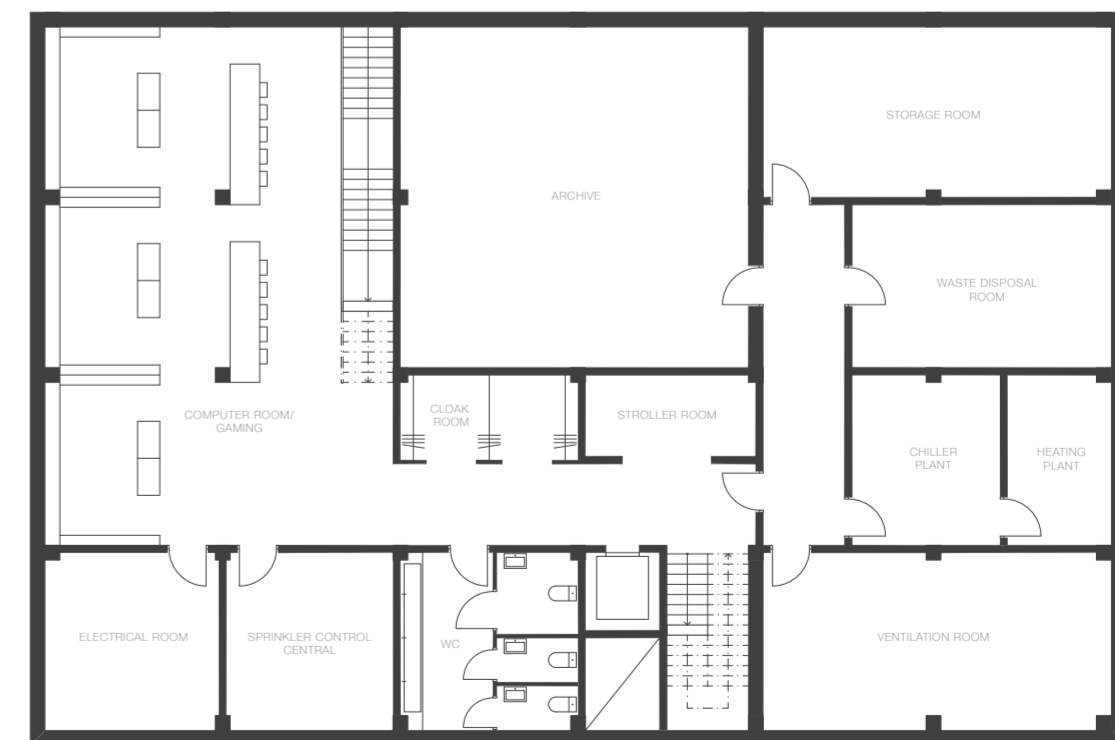
SITE PLAN 1:400 (A1)



SECTION C-C 1:400 (A1)

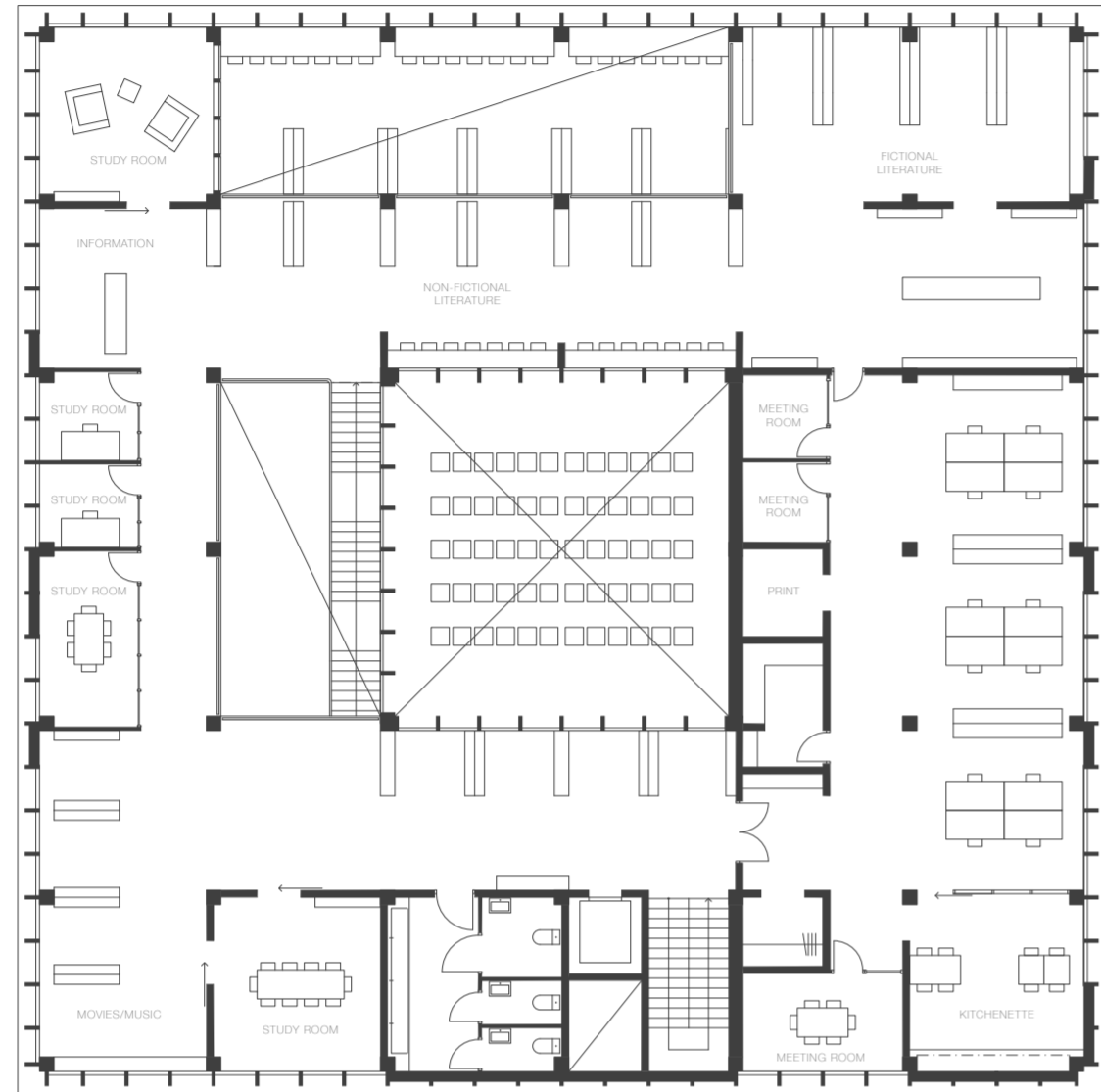


FIRST FLOOR 1:200 (A1)



BASEMENT 1:200 (A1)





SECOND FLOOR 1:200 (A1)



VIEW ENTRANCE HALL



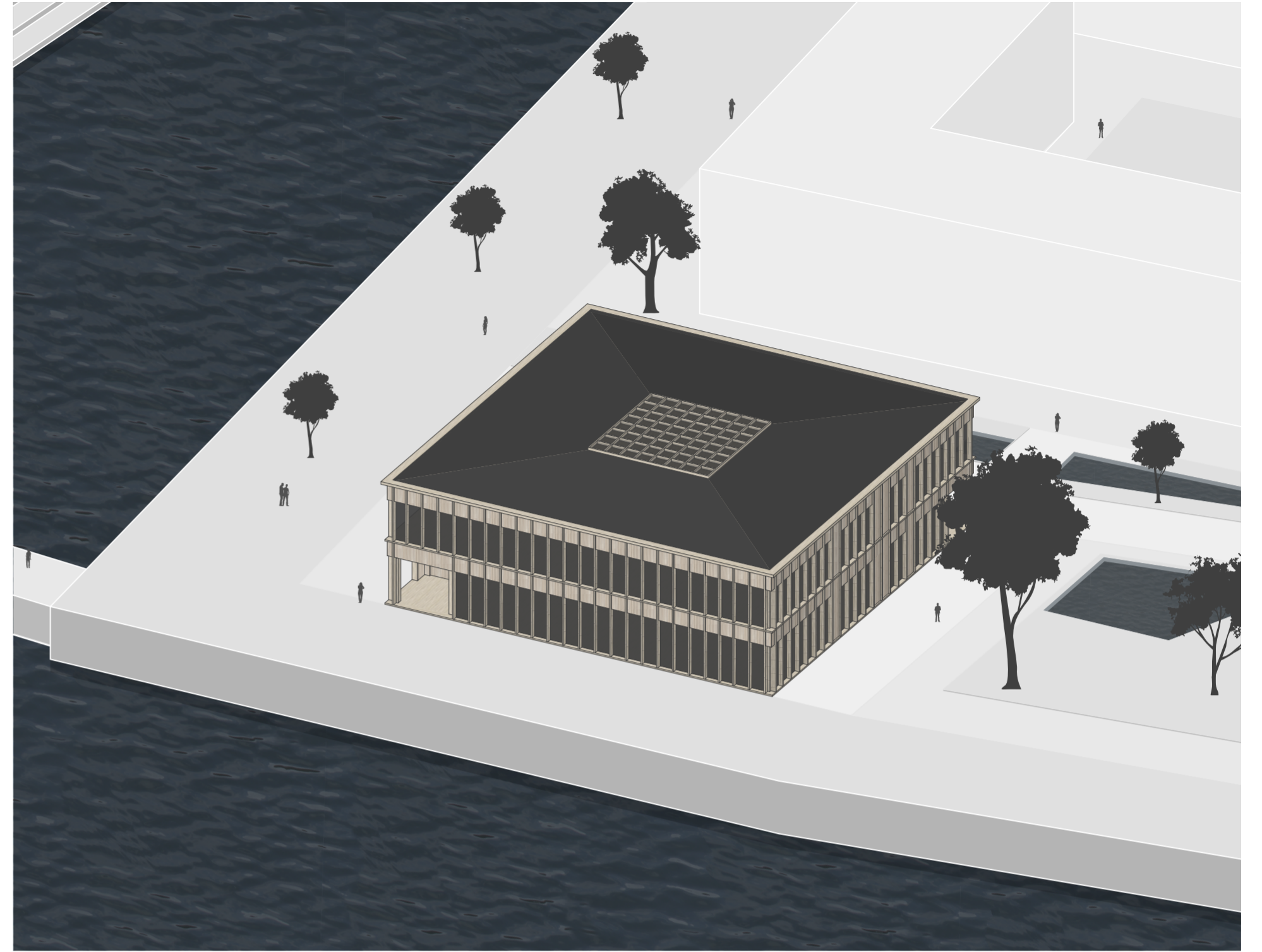
SECTION D-D 1:200 (A1)



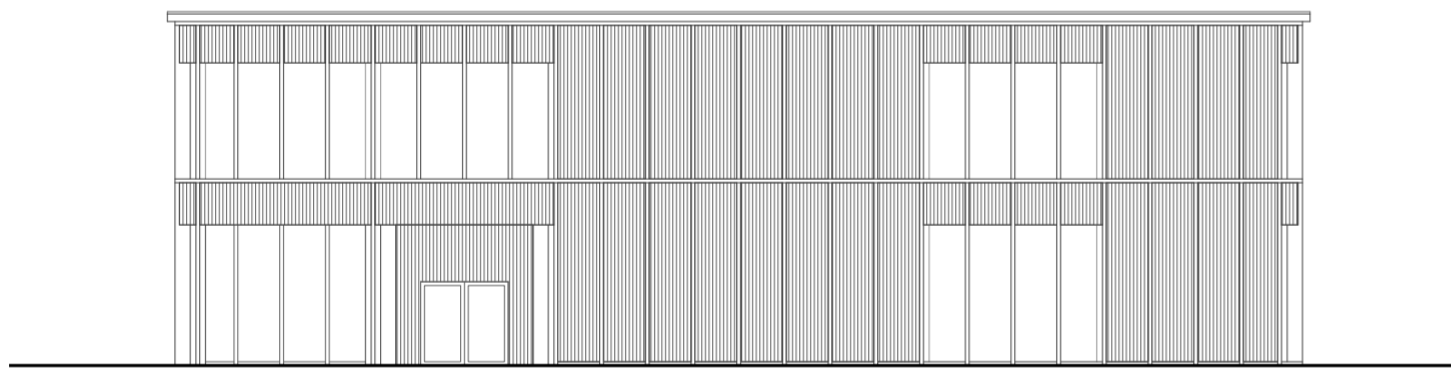
SECTION E-E 1:200 (A1)



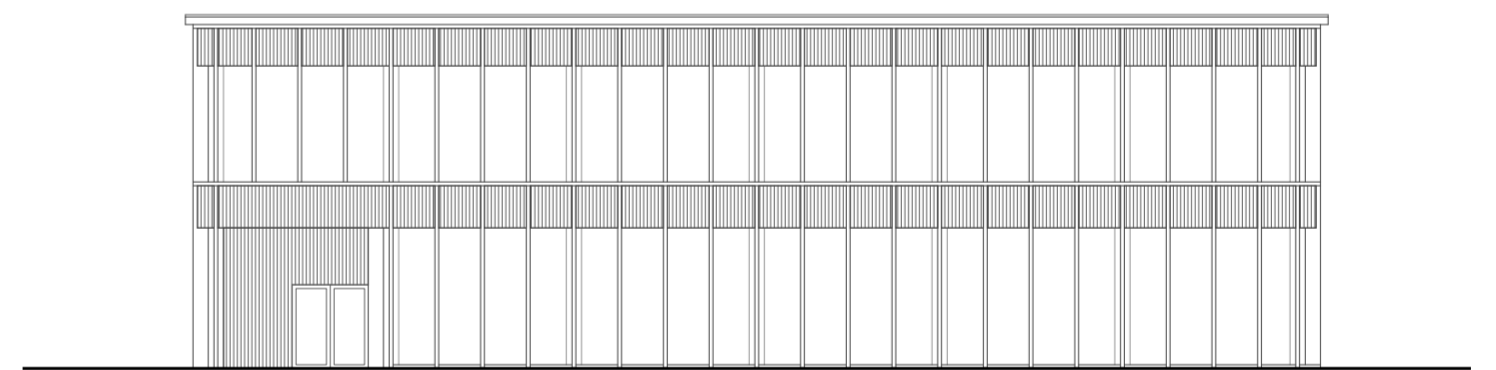
VIEW FACADE



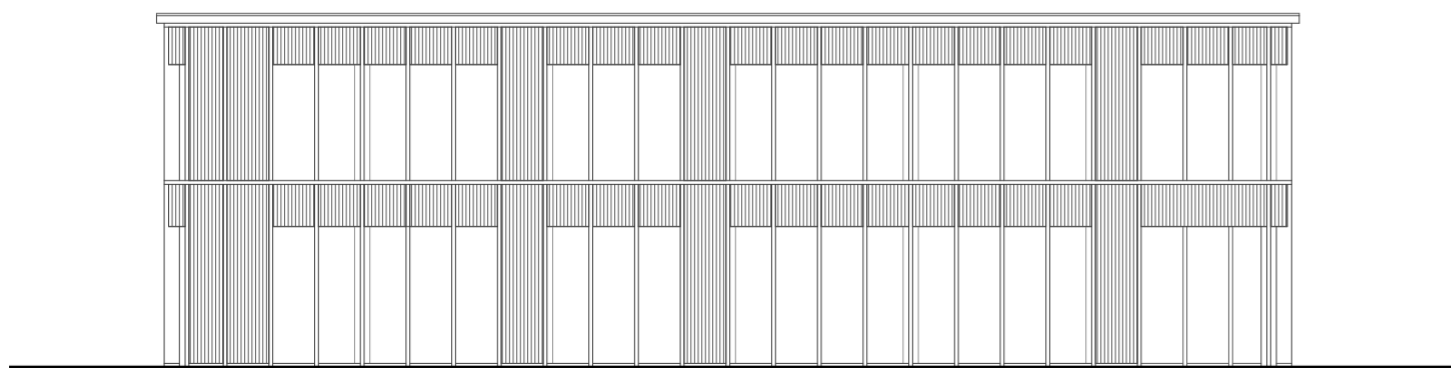
AXONOMETRIC VIEW



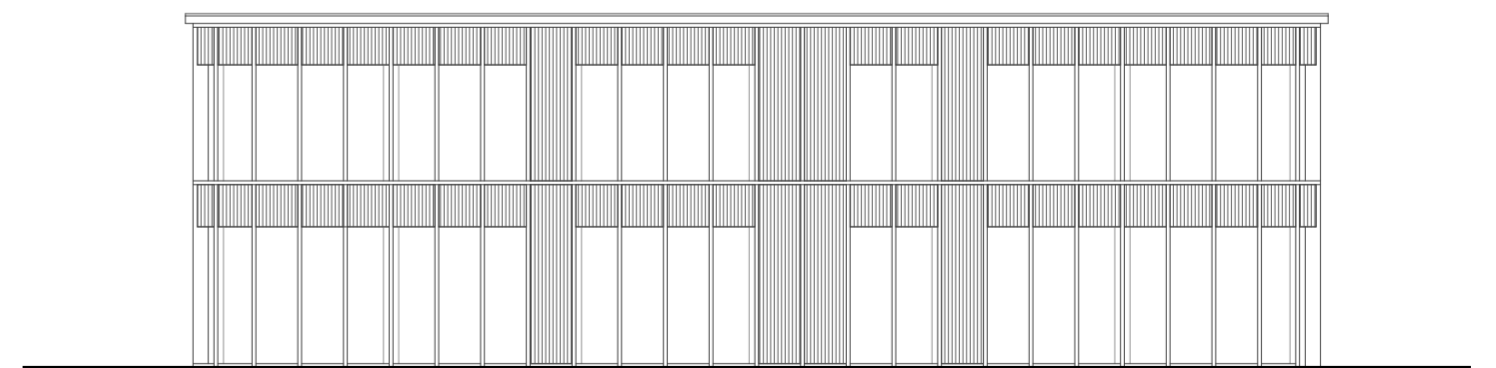
FACADE SOUTH 1:200 (A1)



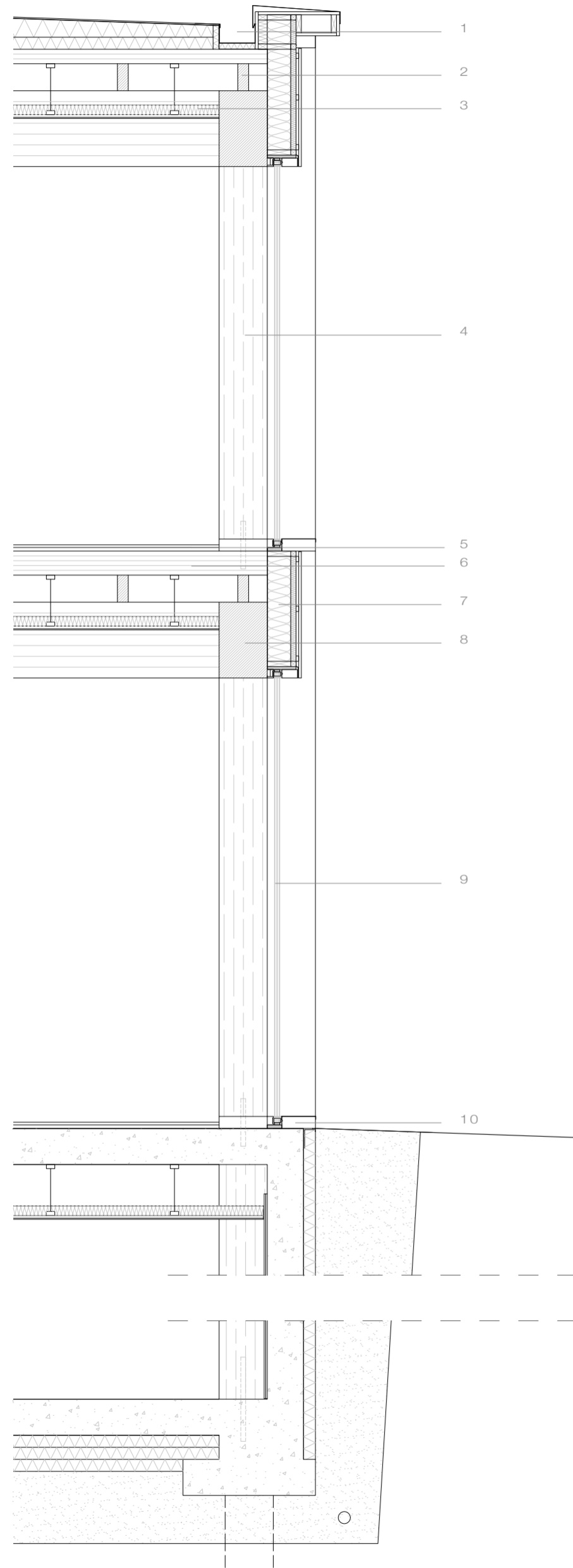
FACADE NORTH 1:200 (A1)



FACADE EAST 1:200 (A1)



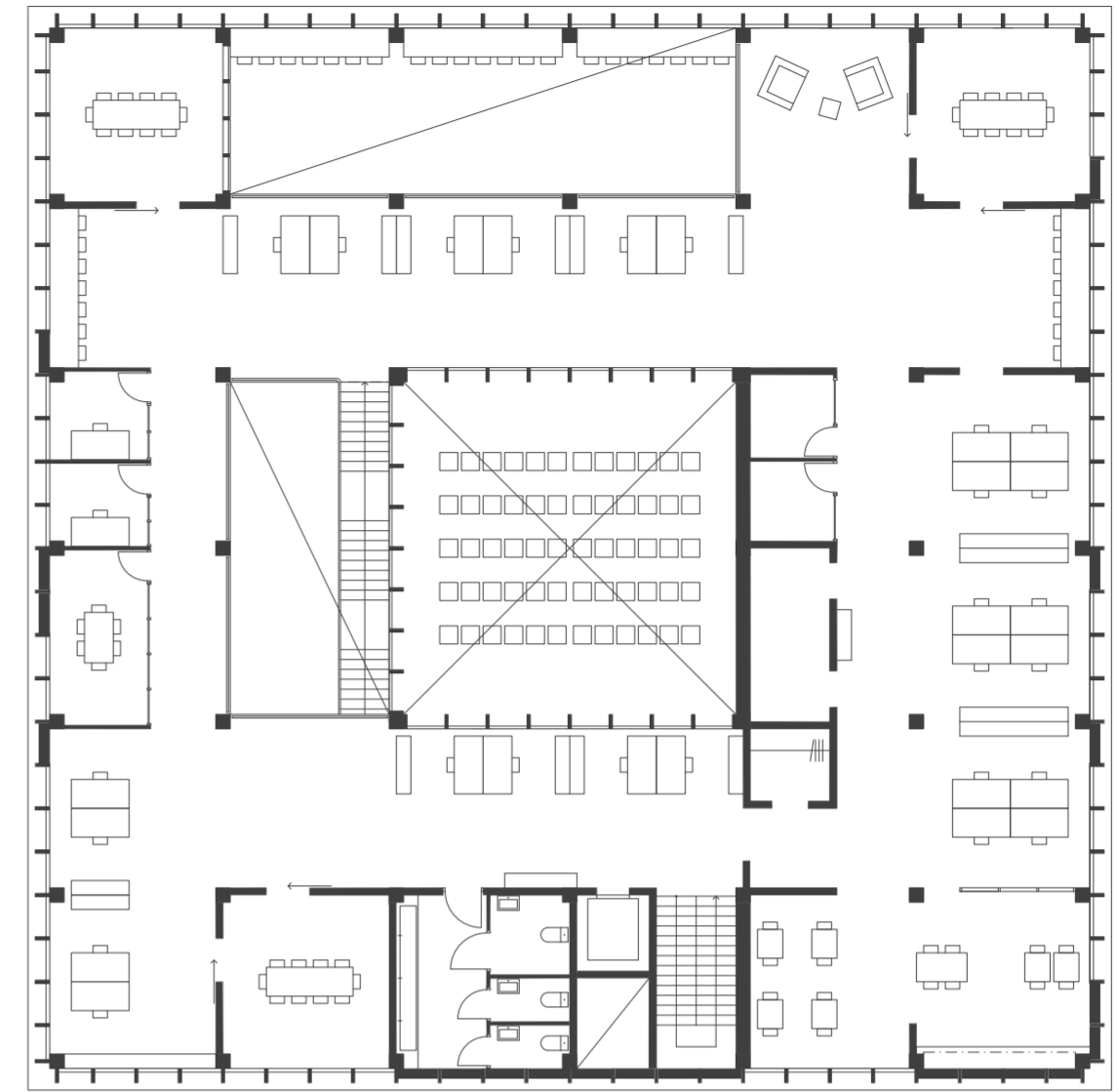
FACADE WEST 1:200 (A1)



- 1. CONCEALED GUTTER
- 2. GLULAM BEAM
- 3. SUSPENDED WOOD CEILING
- 4. GLULAM COLUMN, 400
- 5. SOLID WOOD FLOORING
- 6. CROSS LAMINATED TIMBER
- 7. WOOD INFILL WALL
- 8. GLULAM BEAM
- 9. TRIPLE GLAZING
- 10. WOOD PROFILES



ELEVATION DRAWING 1:40 (A1)  
SECTION DRAWING 1:40 (A1)



ALTERNATIVE FLOOR 1:200 (A1)





VIEW MAIN ROOM



VIEW LIBRARY

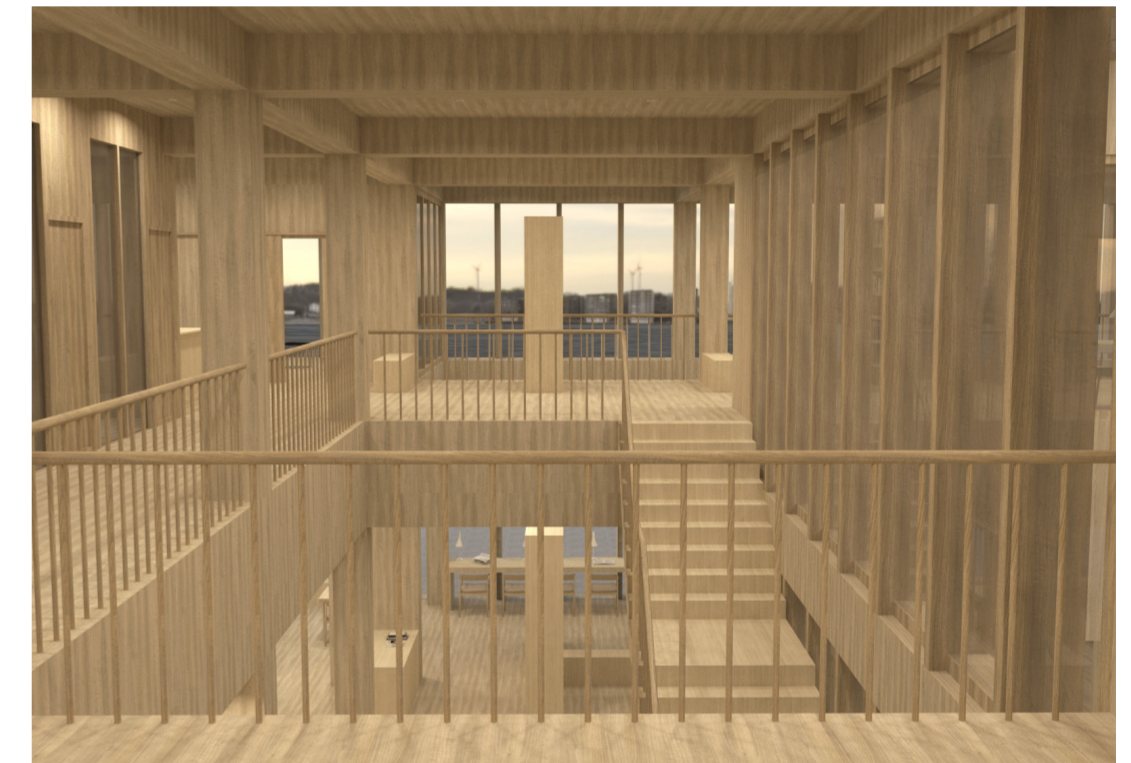
The layout of the plan effortlessly guides every visitor through the building, establishing a seamless connection between the two main floors. This relationship is fostered by the open spaces and the study hall.



VIEW MAIN ROOM

VIEW STAIR

The interaction of sightlines, materials, and rhythmic design elements creates a natural flow of movement throughout the building, allowing visitors to effortlessly explore and engage with each space.



VIEW RESTAURANT

The restaurant, strategically positioned at the core of the new urban plan, serves as a vital link between the library and the surrounding urban fabric, enhancing the overarching concept of both projects.



BACHELOR'S THESIS IN ARCHITECTURE  
ELLA GEIJER  
2024