

VILLA DELIN
LÉONIE GEISENDORF

TABLE OF CONTENT

1. LÉONIE GEISENDORF
2. VILLA DELIN, DESIGN NOTES
3. VILLA DELIN TODAY



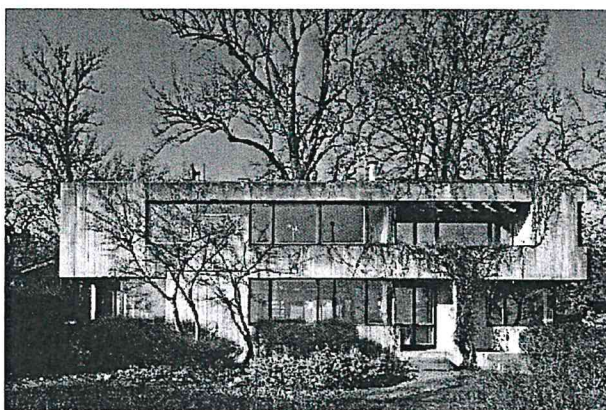
Léonie Geisendorf

Born in Warsaw, Léonie Geisendorf (1914-2016) lived in Sweden from 1938 to 2009 where much of her work is situated.

Working alongside famous architects including Le Corbusier, Anders Tengbom and Ralph Erskine, Geisendorf brought international influences to Swedish architecture

and inspired generations of architects after her. Geisendorf was influenced by the ideals of late modernism, however brutalist and structuralist influences are also apparent in her work.

The use of raw materials, untreated concrete, and blue details are reoccurring throughout her buildings.



Villa Delin

**villa delin,
eastern facade**

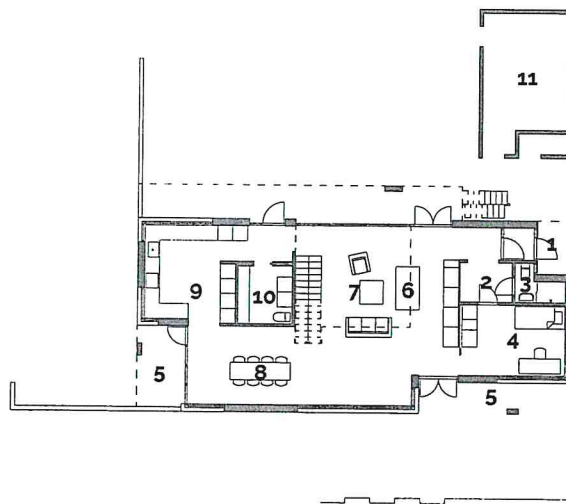
**by holger
ellgaard**

Situated by the seaside in south-west Djursholm lies Villa Delin. Finished in 1970 the Villa was home to Anders and Ethel Delin. The pair wanted a sculptural home combining a light and transparent interior with easy access to the outside.

The resulting villa was an elongated raw concrete structure

with large, horizontal openings to the garden and sea. The facades are textured, demonstrating the timber formwork used to create the concrete structure. The heavy mass of the concrete structure is punctuated by fine timber window frames. The windows change in size and proportion creating elevations with a rhythmic playfulness.

CHAPTER 2



villa delin ground plan

own drawing

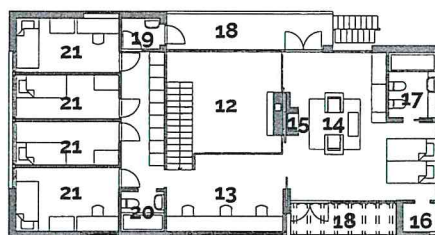
- 1 entry
- 2 wardrobe
- 3 wc
- 4 guest
- 5 terrace
- 6 fireplace
- 7 living
- 8 dining
- 9 kitchen
- 10 laundry
- 11 workshop

Inside, Villa Delin is light and airy. Entry into the Villa is somewhat constricted, however immediately contrasts with a double-height living space.

Double-height glazing in the living area allows soft light to fall into the heart of the house. A fireplace stands like a sculpture in the middle of the room, emphasizing

the living room's focal position within the Villa. The fireplace appears a continuation of a staircase leading to a mezzanine study above.

Geisendorf creates clear lines of sight within an open plan to accentuate a feeling of spaciousness and visually connects inhabitants to the garden and sea beyond.



villa delin
first floor plan

own drawing

- 12 atrium**
- 13 study**
- 14 master**
- 15 fireplace**
- 16 wardrobe**
- 17 ensuite**
- 18 balcony**
- 19 powder room**
- 20 wc**
- 21 bedroom**

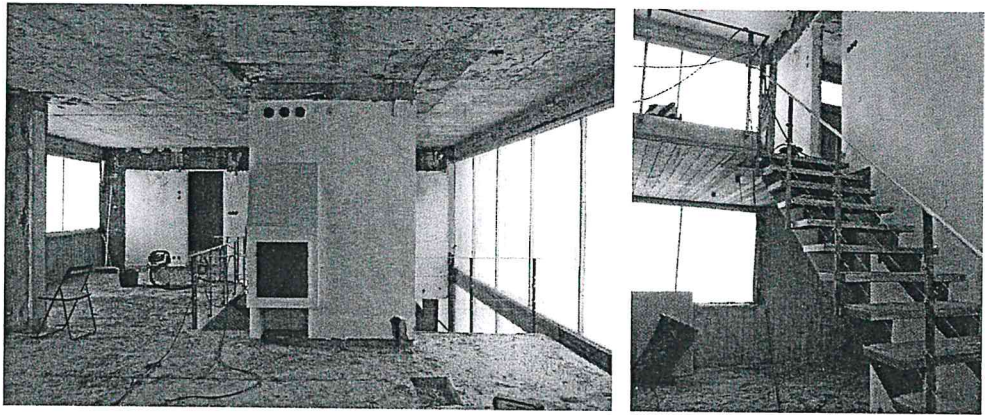
Private spaces are housed on the Villa's second floor. A study on the mezzanine runs below a large ribbon window framing views of the sea.

The north wing houses a generous master wing with its own sculptural stair and seaside terrace. The southern wing is tighter and houses a series of small

bedrooms along a long, narrow corridor.

Each room contains at least one large window continuing the interior airy qualities and connections to the garden even in the most private rooms. The windows wrap corners and are playful articulations as Geisendorf guides the eye to specific views.

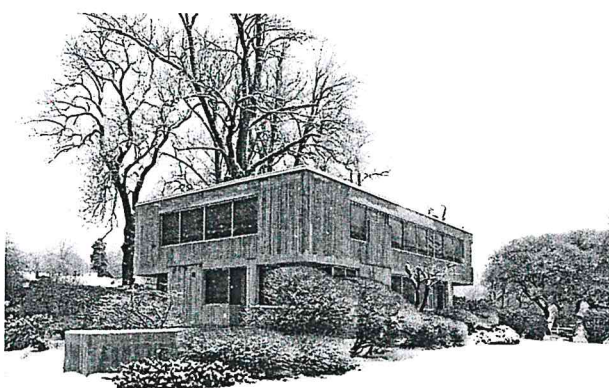
CHAPTER 3



**left: master
bedroom
fireplace with
views to the
mezzanine
and atrium**

**right: stairs to
the mezzanine
with windows
on both
storeys**

**own
photographs**



Villa Delin Today

**south-eastern
corner facing
the seaside**

**own
photograph**

We visited Villa Delin in late-January and were fortunate to view the house in its current state. Situated in deep snow, the Villa's character was unrecognisable from the summery photographs we had previously viewed.

But more shockingly, the Villa was under extensive renovation. While alterations have been made over time, this is likely to be its

most invasive. Interior walls, joinery, and details had been removed with only the stair and fireplace remaining. Renovations revealed the concrete shell of the house and exposed the airy and simple creation of Geisendorf in a new light. While it was a rare, exciting opportunity to see a building in this state, we were saddened by the extensive removals.



left
bec
firel
view
me:
and
righ
the
with
ont
stor
owr
pho

CHALMERS
NORDIC ARCHITECTURE
SPRING SEMESTER 2019
ALICIA BELL, FRANS HERKLINT, ROBIN LITHÉN, ALEXANDRE RIVIERE, TIAN RONG