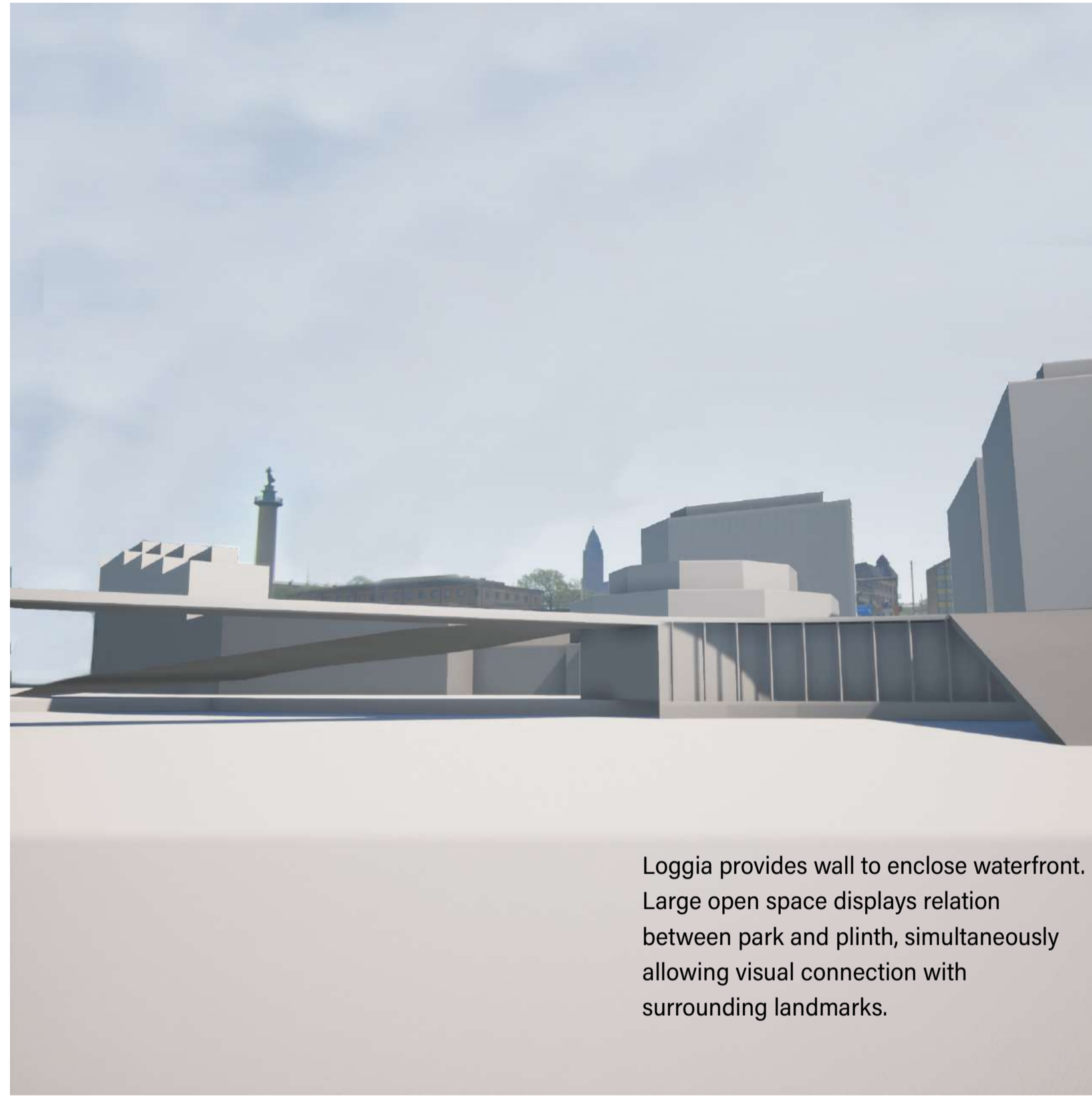
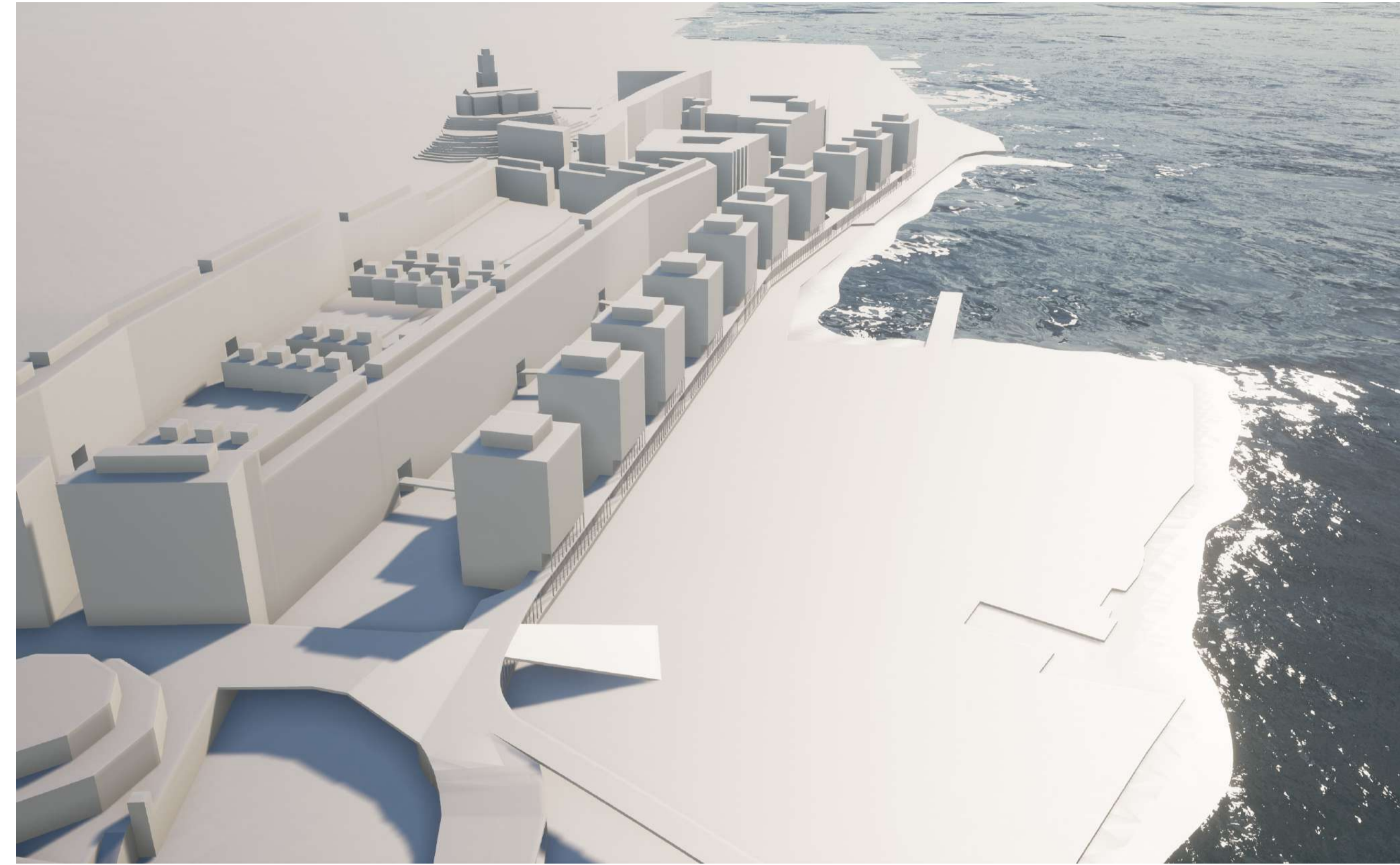


deep breath gbg



Loggia provides wall to enclose waterfront. Large open space displays relation between park and plinth, simultaneously allowing visual connection with surrounding landmarks.



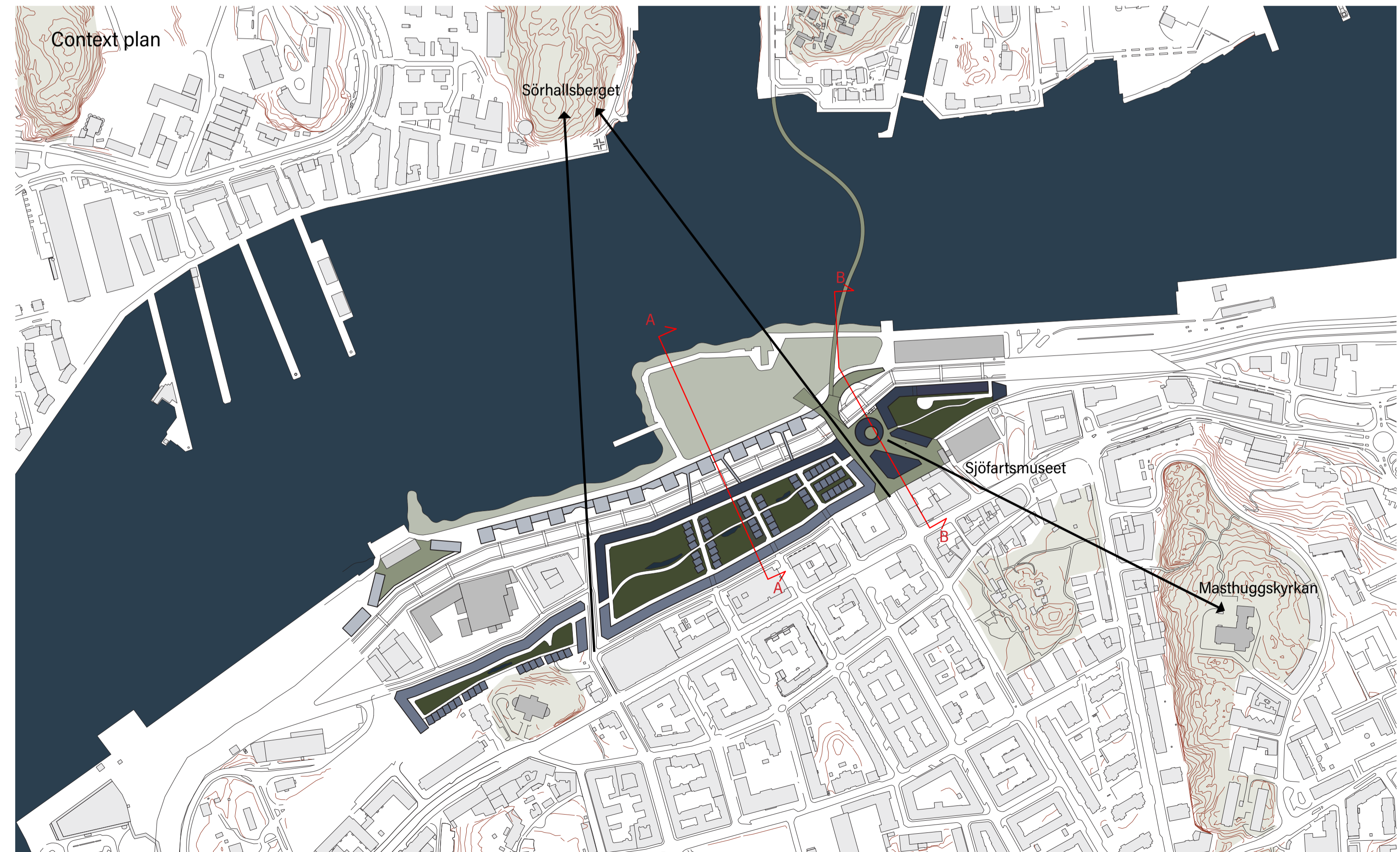
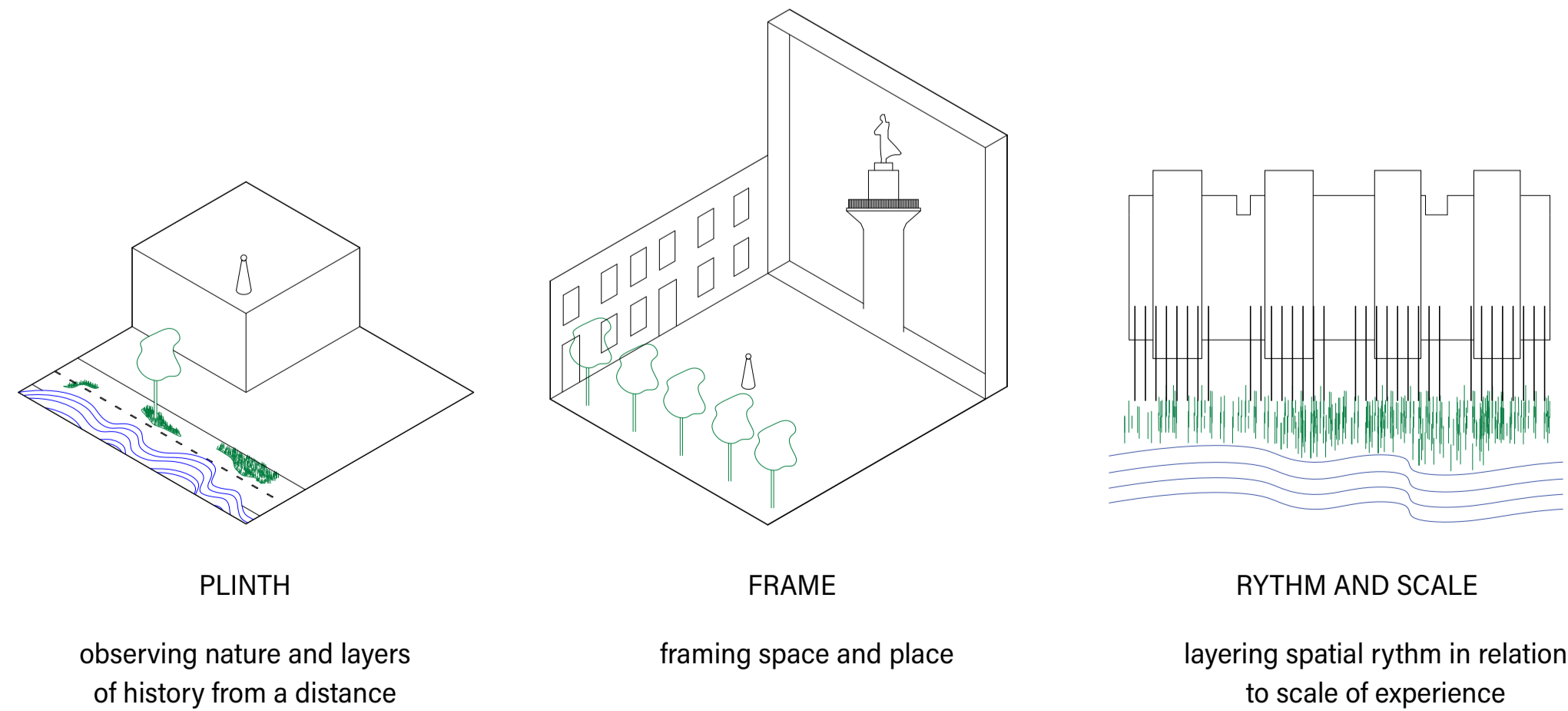
Softened edge towards the river creates access to the water and improved flood protection through infiltration.

After 300 years of accommodating intensive extraction, production and consumption, the area known today as Fiskhamnen takes a deep breath. Its buildings move up and away from the river and patiently watch to see what the water will do. The neighborhood's series of enclosures frame the place and the present, with the waterfront park reinstating the city's relationship to Göta Älv on the site. Taking full advantage of facing an open space wider than 300 meters, while not losing sight of life at eye-level within the area, rhythmic interventions are made in relation to scale.

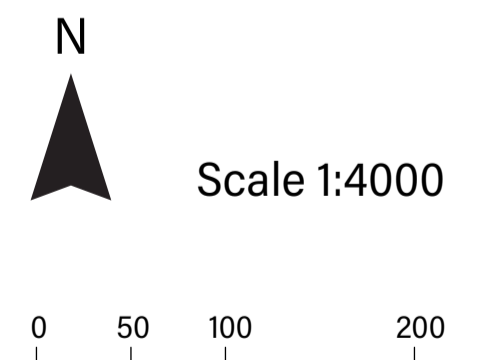
Project Area	15.3 ha
Total BTA	175 502 m ²
commercial	10 854
residential*	164 648
Approx. added residents	2 100
Public space (excl. streets) per resident	ca 40 000 m ² 18.5 m ²
Private outdoor spaces per resident	20 325 9.6

*All buildings except point blocks are 12 meters deep in order to accommodate for the fluctuating needs of the city over time. All ground level floors are sufficiently tall (5 m) and well connected to the street to support a variety of functions.

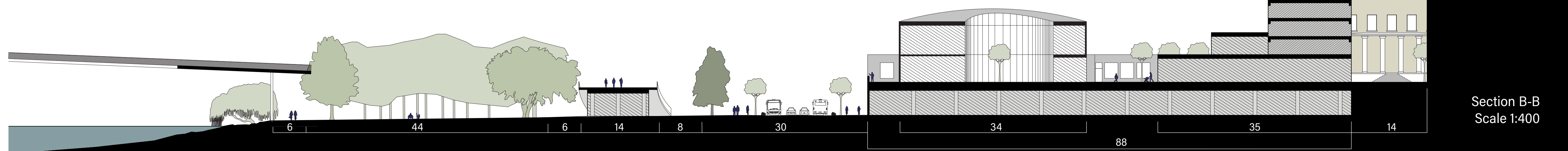
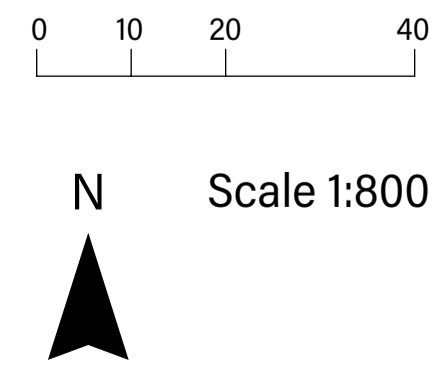
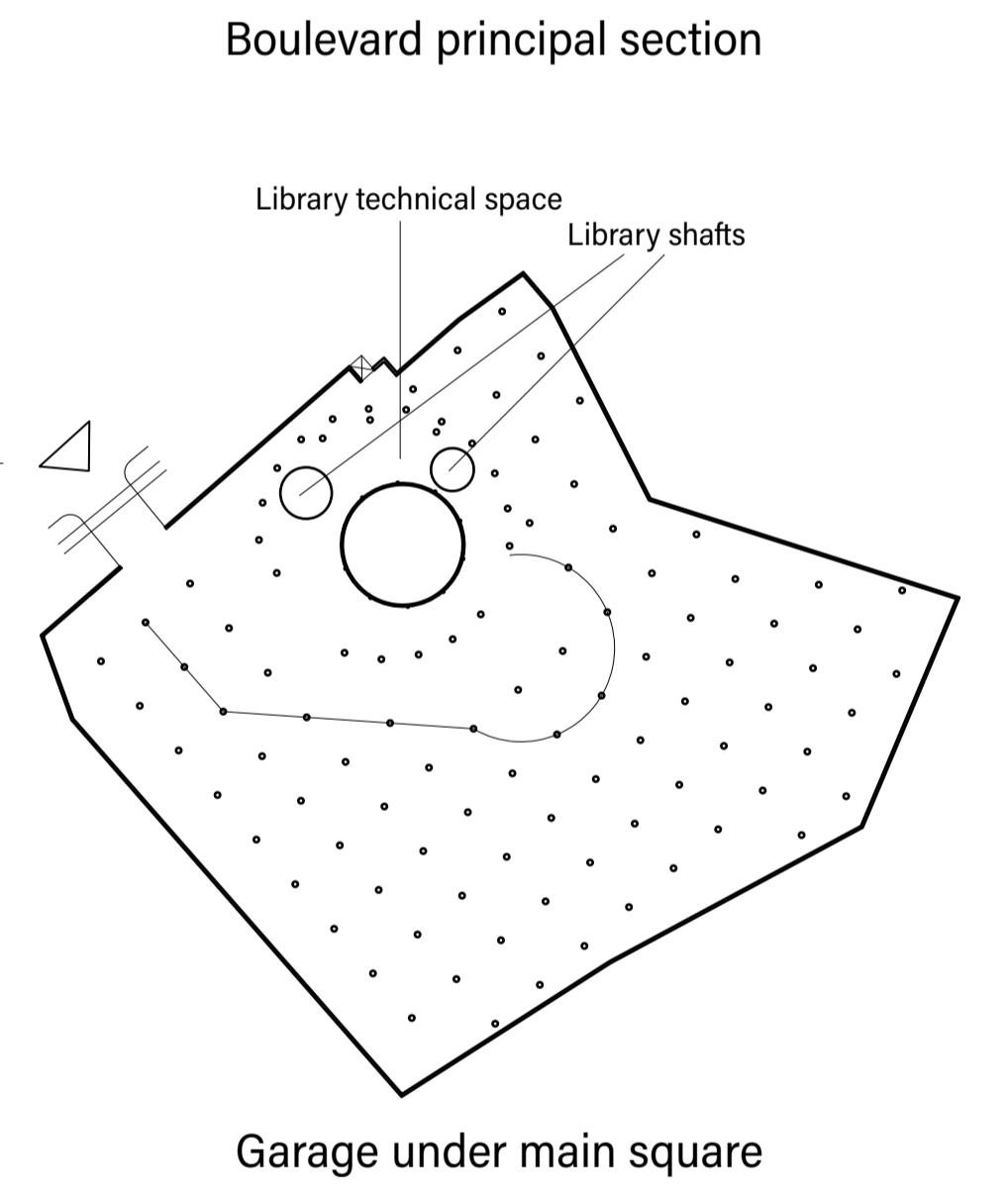
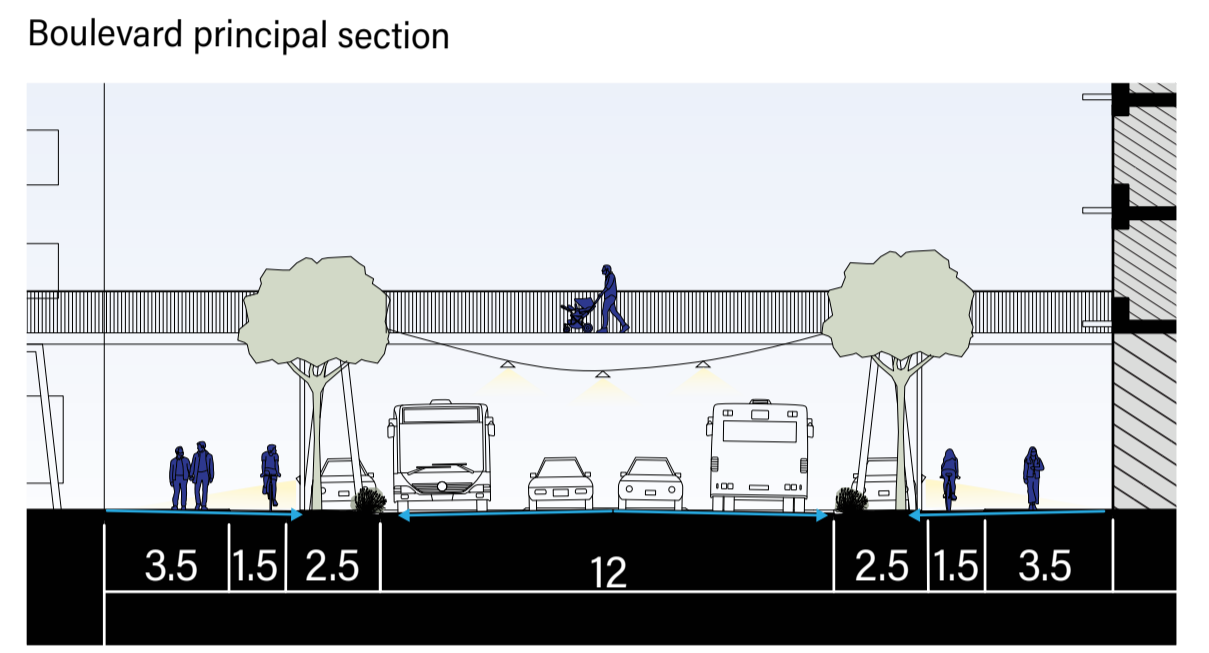
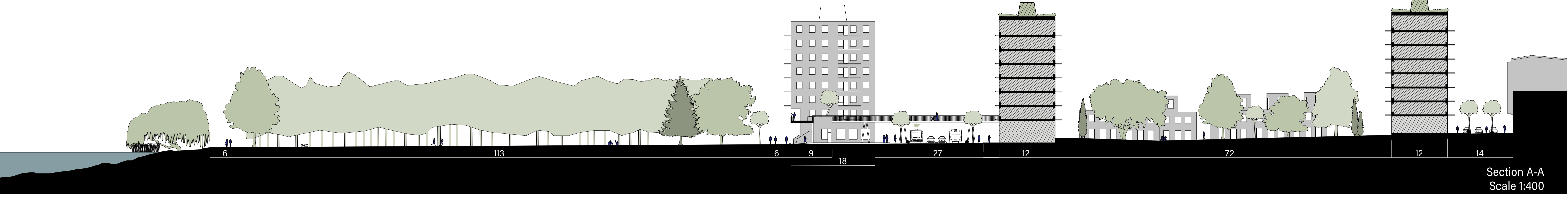
DESIGN ELEMENTS



- Residential enclosure
- Main square enclosure
- Waterfront park enclosure
- Phase 1
- Phase 2
- Phase 3
- Sight line
- Landmark building
- Existing green structure

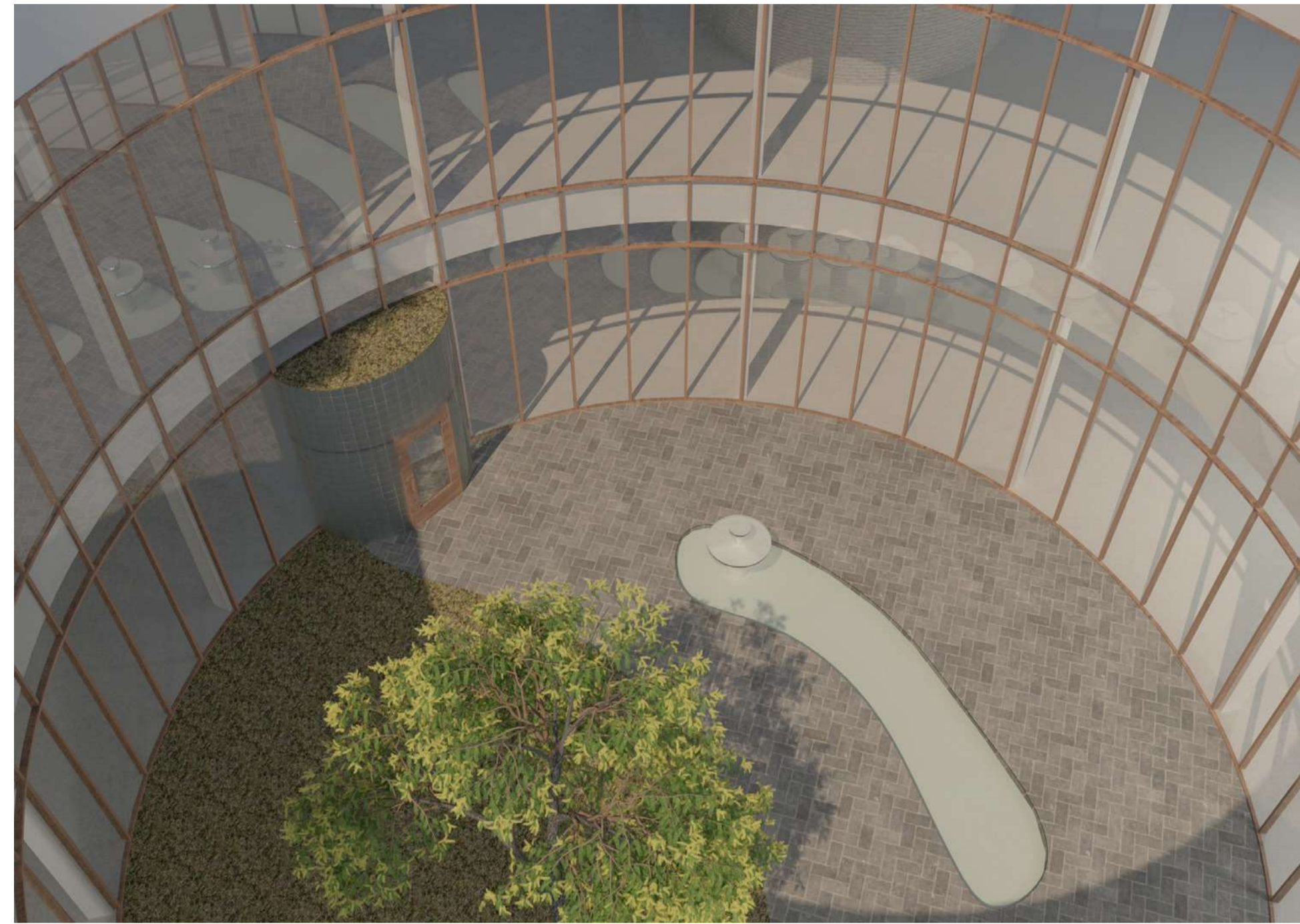


Phase 1 defines the plinth and establishes a park, a boulevard and a public square with a library. Phase 2 develops the area towards Majorna where the motorway Oscarsleden formerly ran, while phase 3 is responsive to changes in coastal conditions, with the area acting as a beachfront park in the meantime.





Approach from square



Entrance courtyard from terrace



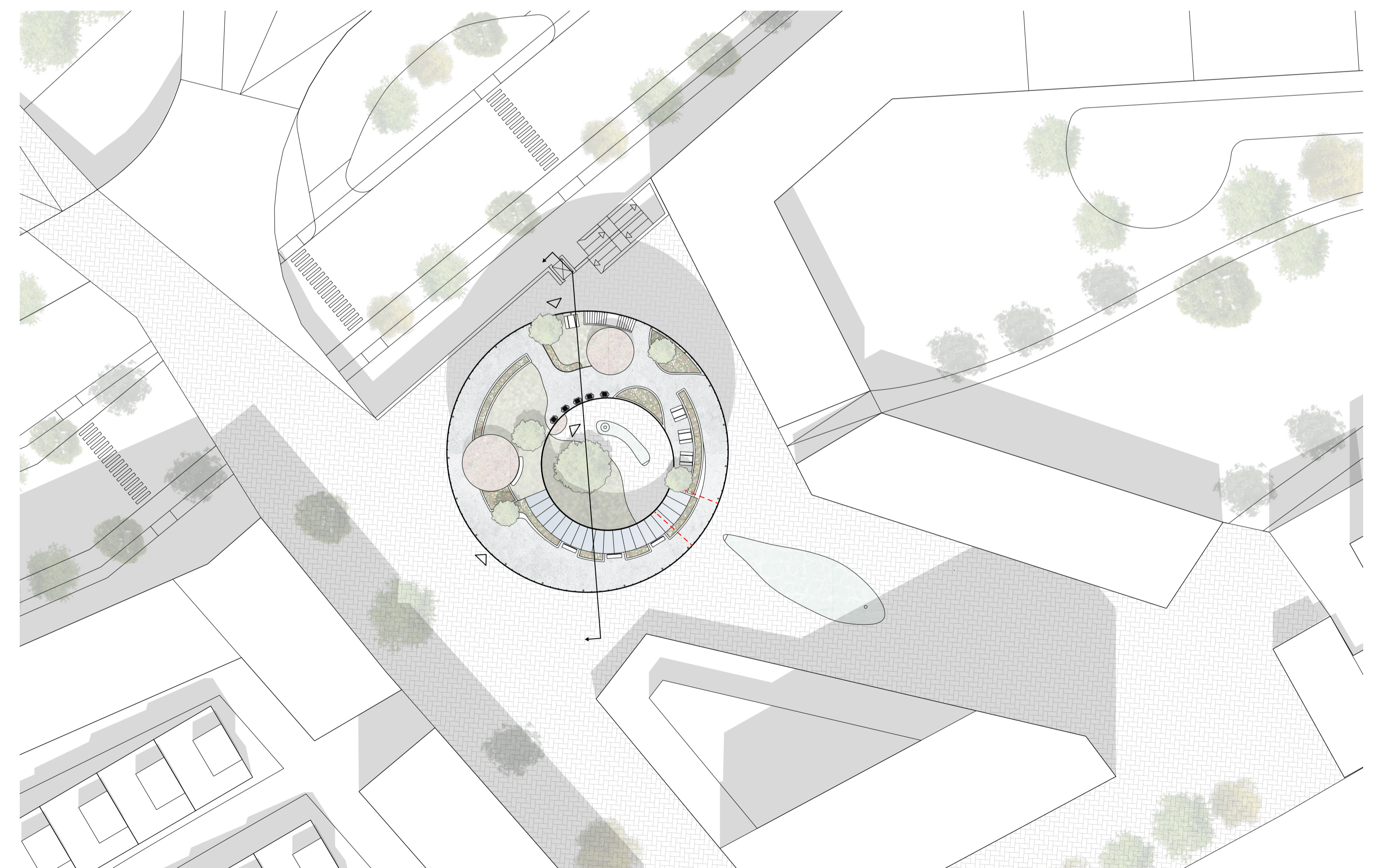
Entrance hall

The public character of this library is established not through an immediate openness, but rather through its invitation for many and diverse individual experiences. A series of geometrical manipulations within the building's bounding cylindrical form creates a great variety of spaces, while counteracting the imposition of a solid and concentric shape. The building's elemental outer appearance serves to establish it in the city's collective memory, while the unique experiences of the interior spaces allows each individual to make the library their own.

As one approaches the library, invitations are extended at different scales. From afar, the silhouette of the building indicates a garden on the roof. Coming closer, one notices one of two large perforations along the base of the building, where the *socket* lifts from the ground to allow passage into the library. One of the openings leads into the inner space of the building, the open air atrium, from where one can reach the main entrance. The other offers the possibility of accessing the library café and roof terrace via a staircase that protrudes slightly next to the children's entrance.

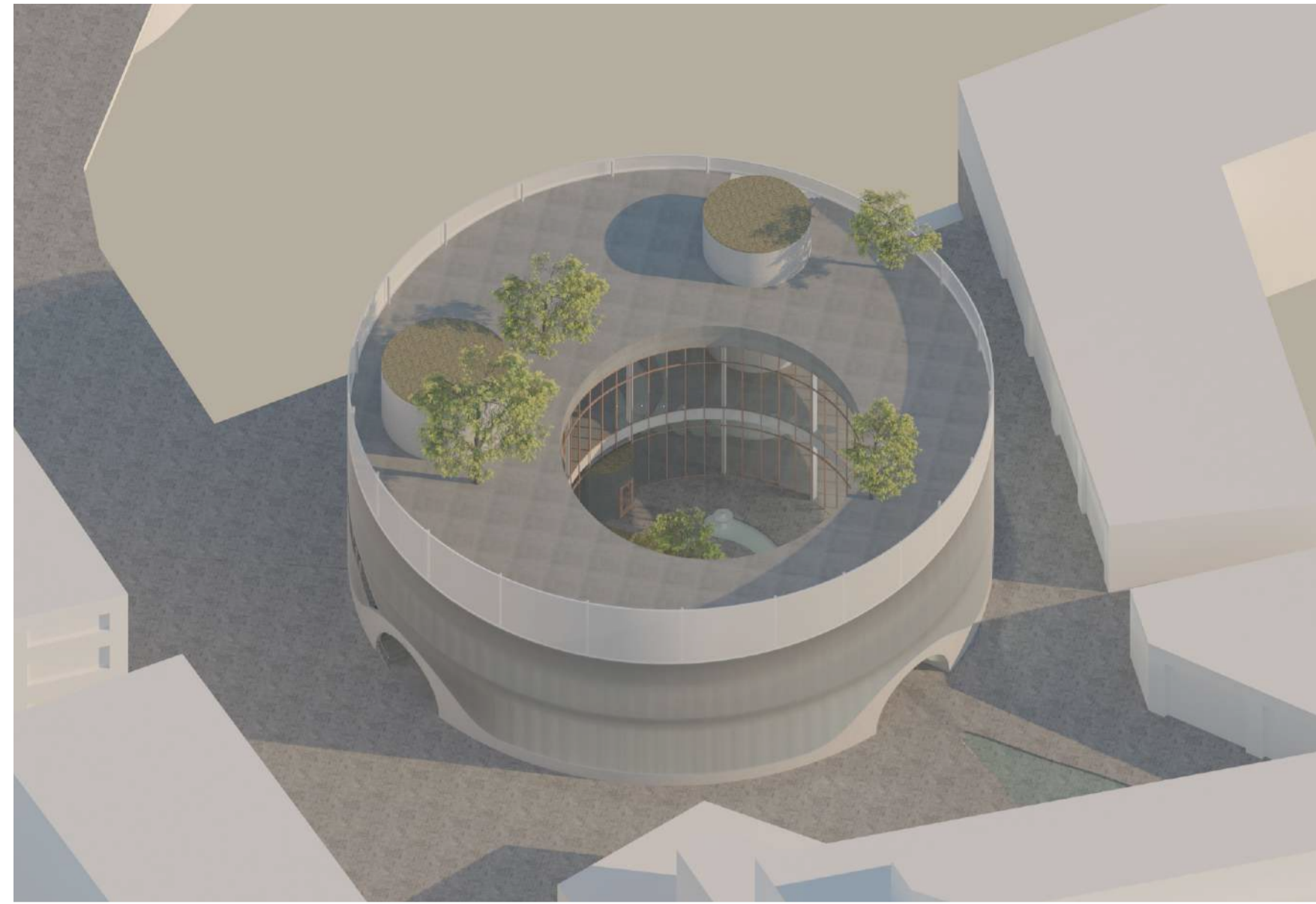
The library is organized to accommodate the busy movement of quick errands near the entrance and then a slowing pace towards the deeper parts of the building. The quietest and most focused seats are the carrels, which are placed along the perimeter of the building on the second floor.

Daylight is diffused through a series of walls with different opacities, giving the library an even, soft light for reading and a focus on immediate space rather than the movement of the city outside. Curved walls and geometries within the building create diverse qualities of light as well as opportunities for discovery as views continuously unfold.

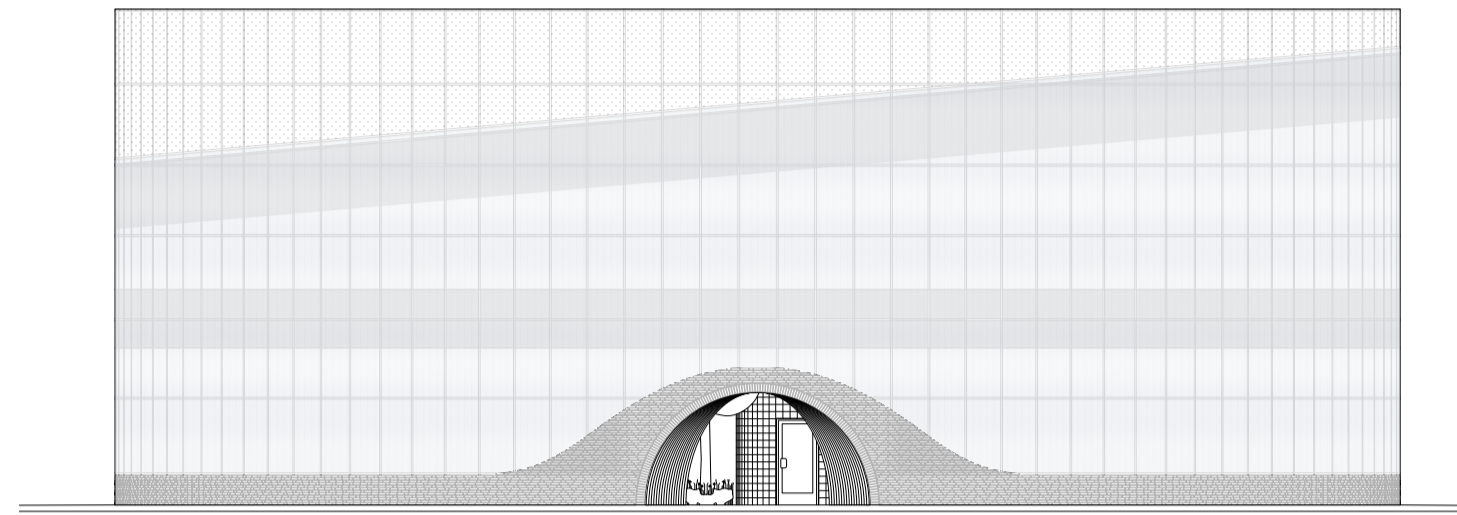


0 1 10 20

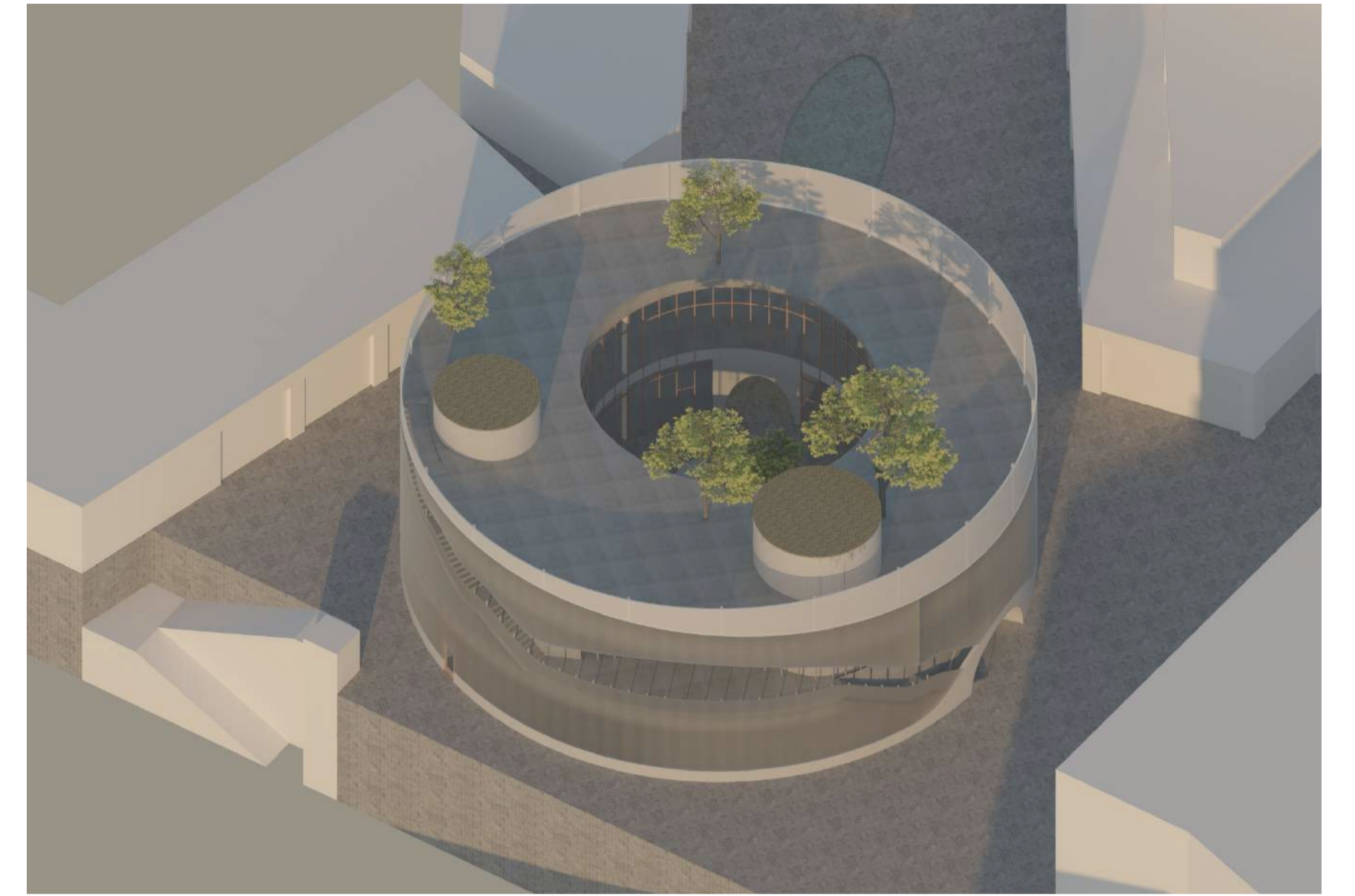
Site Plan
Scale 1:400, (A1)



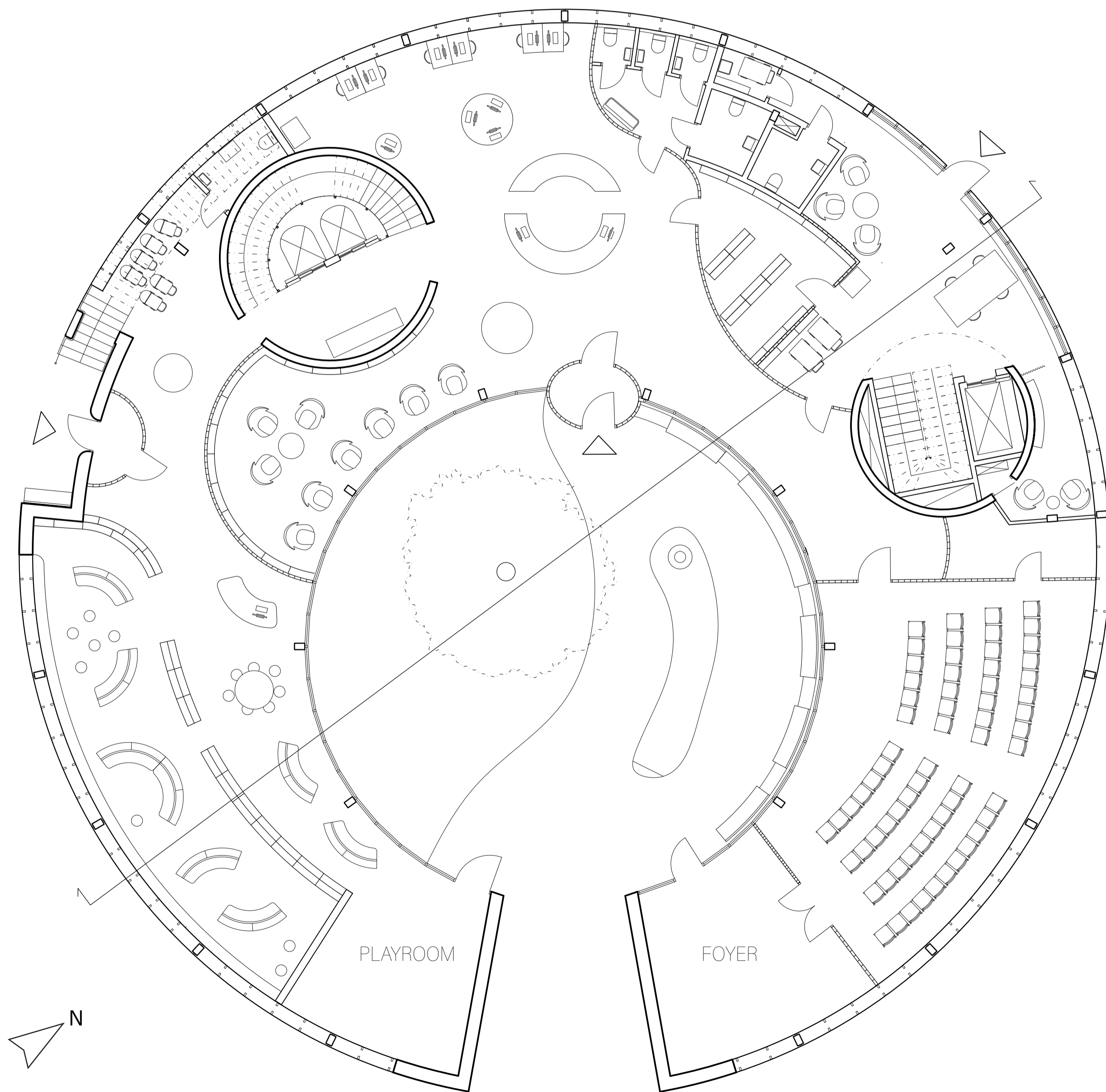
Axonometric view from South



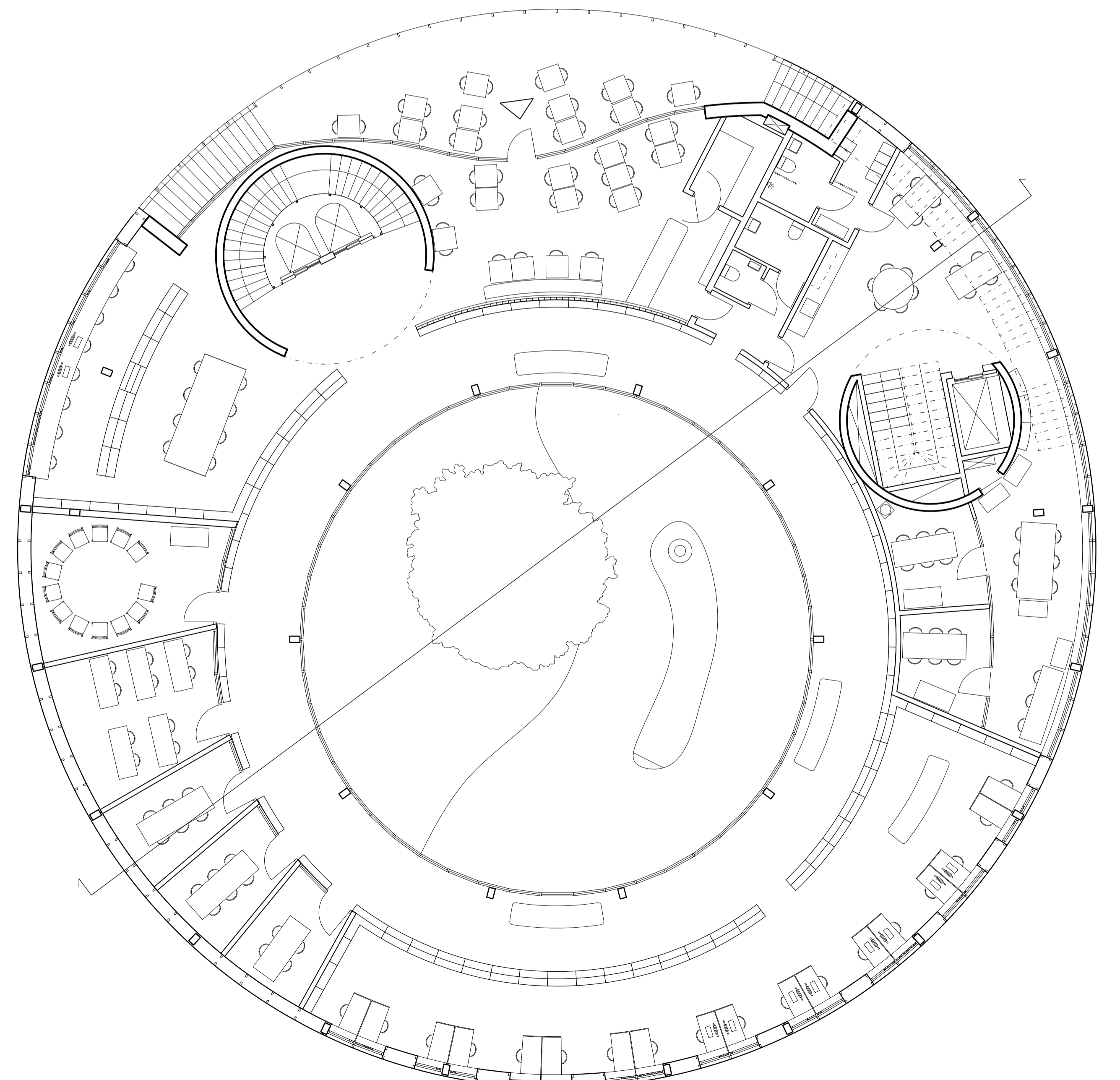
Facade, Southeast
Scale 1:200 (A1)



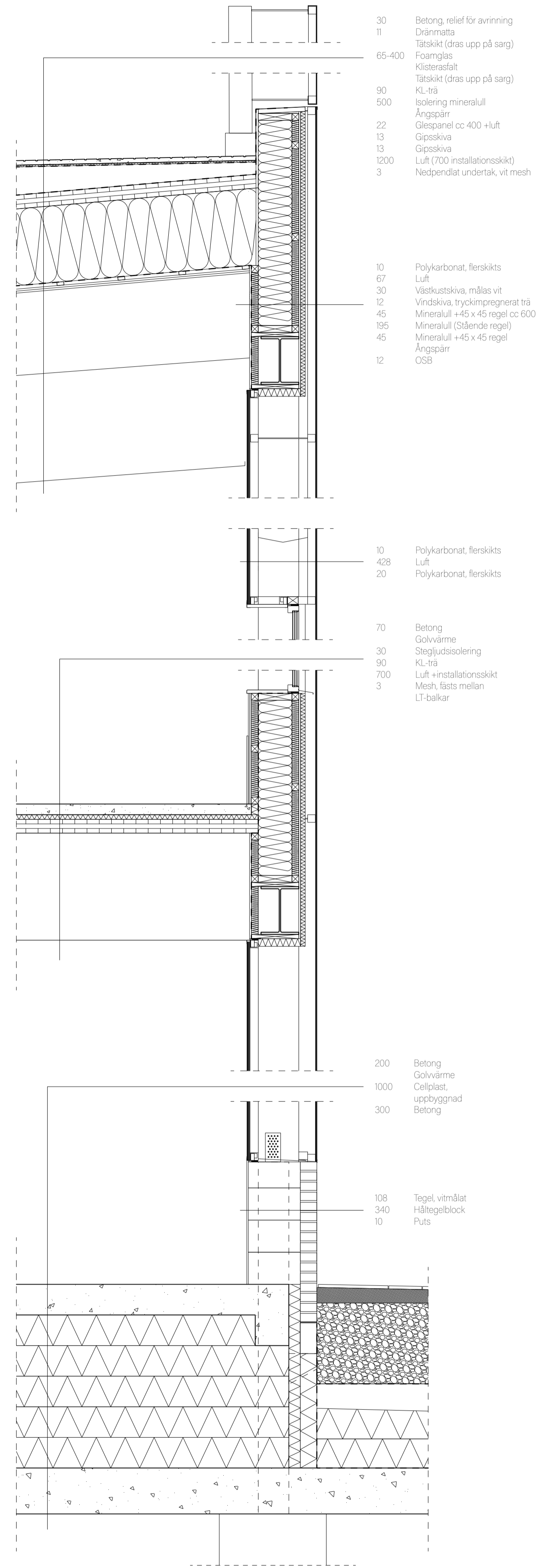
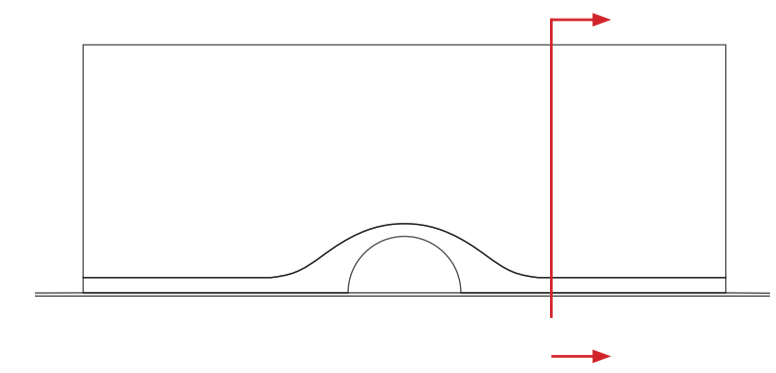
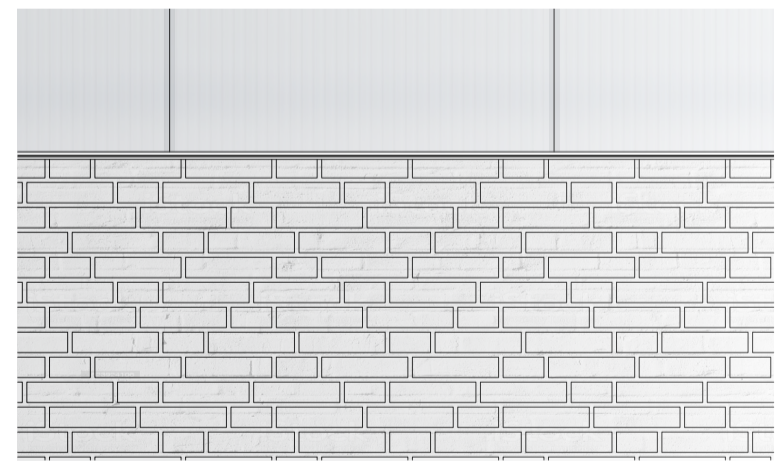
Axonometric view from Northeast



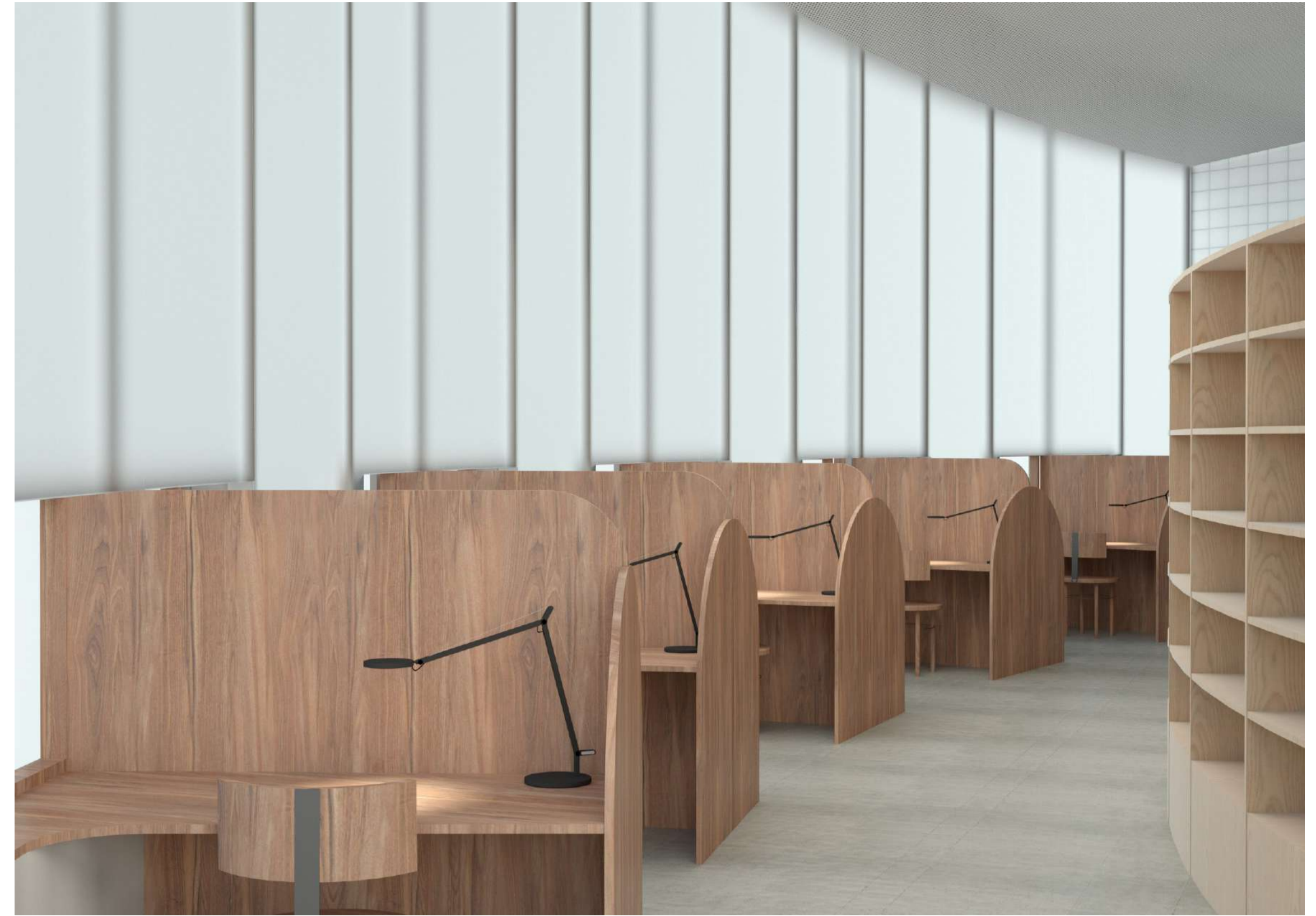
Ground Floor
Scale 1:100, (A1)



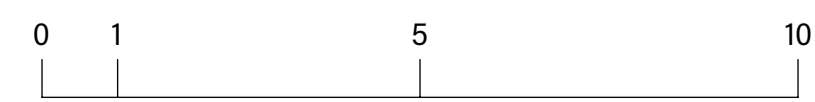
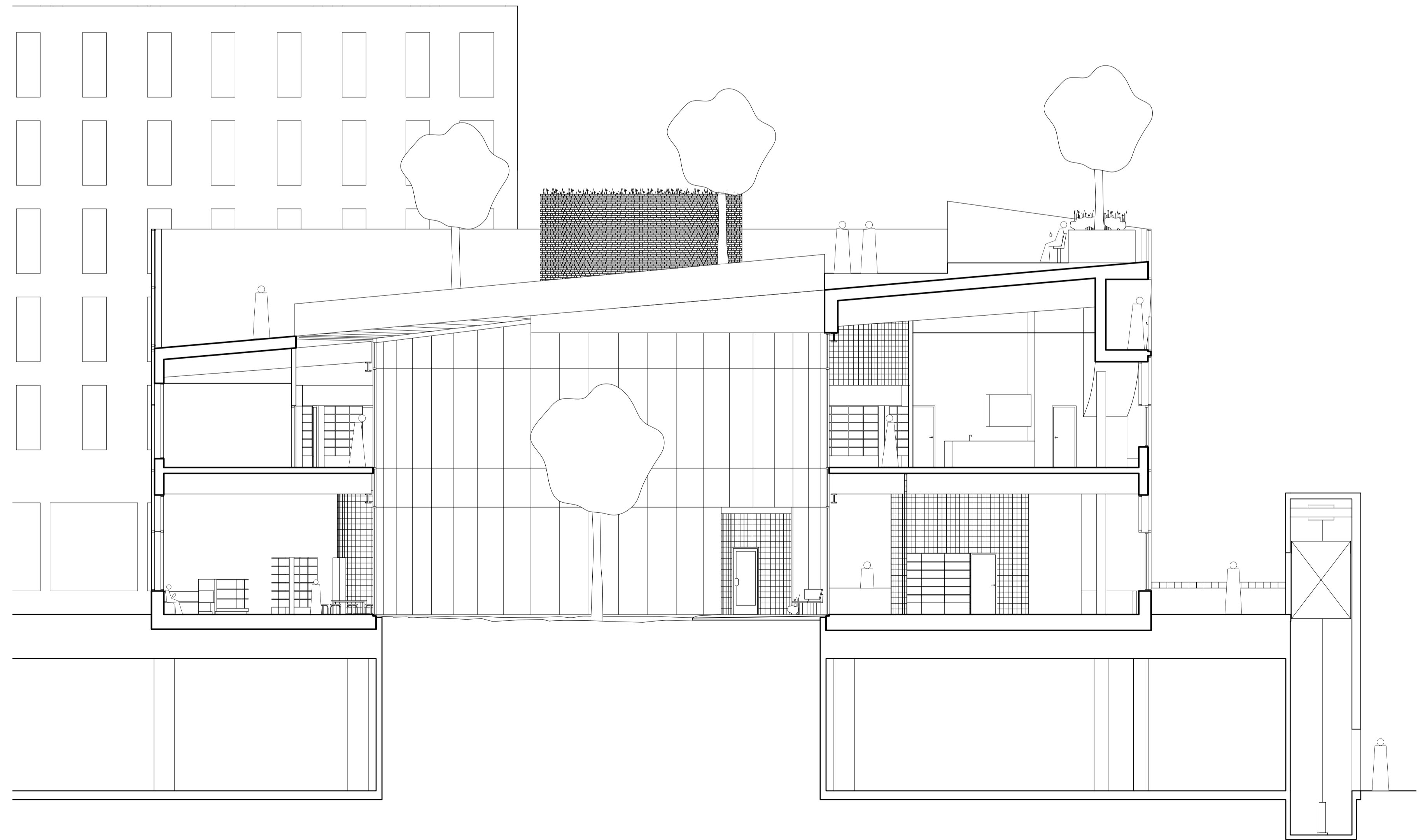
1st Floor
Scale 1:100, (A1)



Wall Section
 Scale 1:20



1st floor reading room



Section
 Scale 1:100