

SUMMERHOUSE
ALVARO AALTO

"The Muuratsalo building group is intended as a kind of combined architects studio and experimental centre ... and where the presence of nature will provide impulses for both forms and structures."

Alvar Aalto , 1953

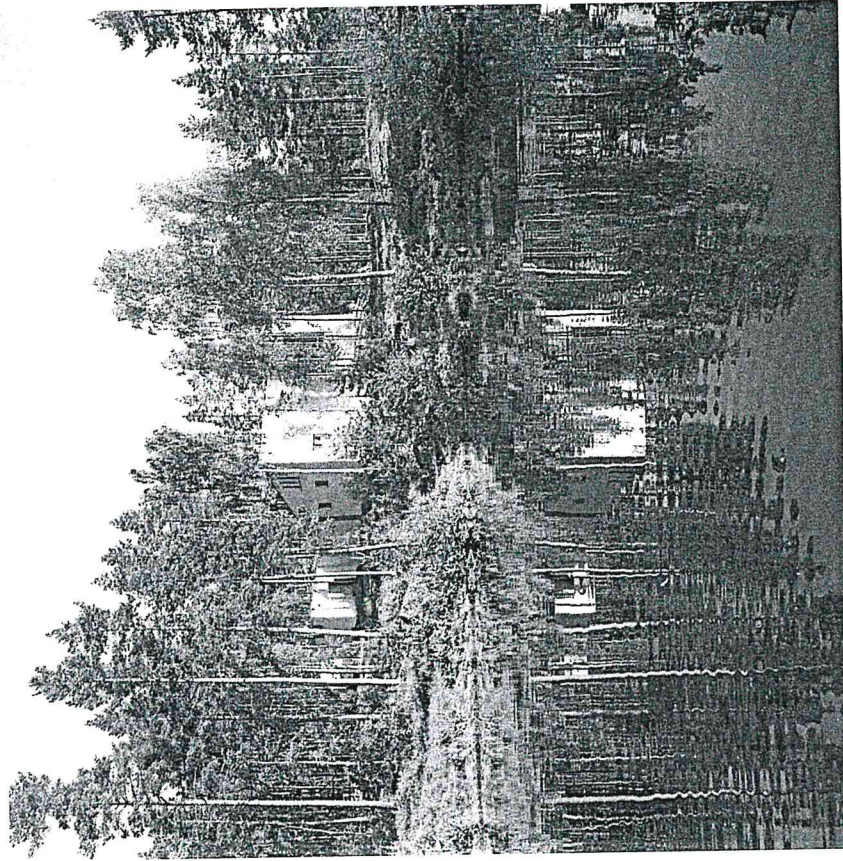


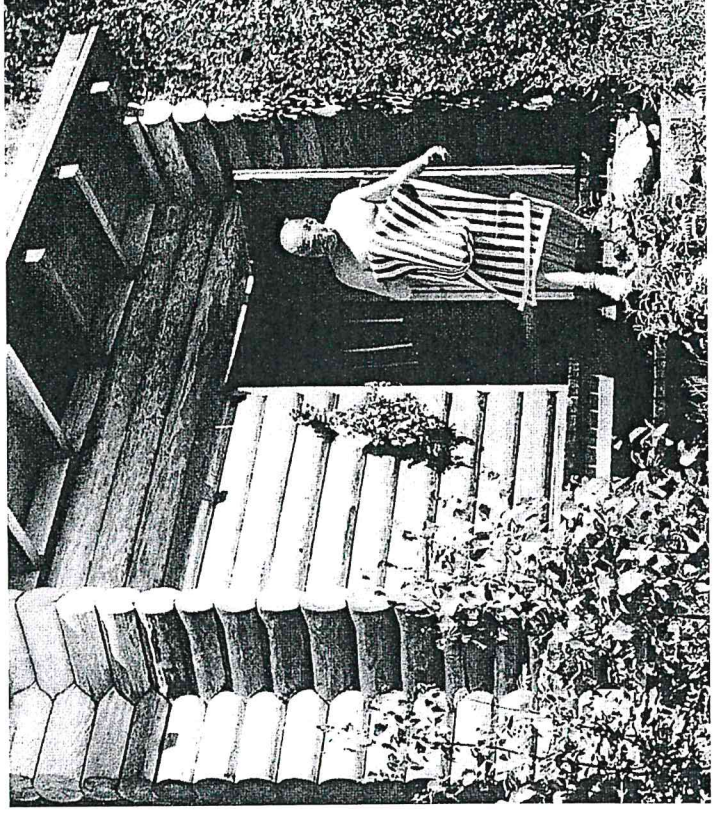
TABLE OF CONTENT

1. THE ARCHITECT - ALVAR AALTO
2. THE SITE - MUURATSALO ISLAND
3. ALVAR AALTO'S PLANS
4. ANALYSIS
5. THE COURTYARD
6. THE INTERIOR
7. BIBLIOGRAPHY

Alvar Aalto

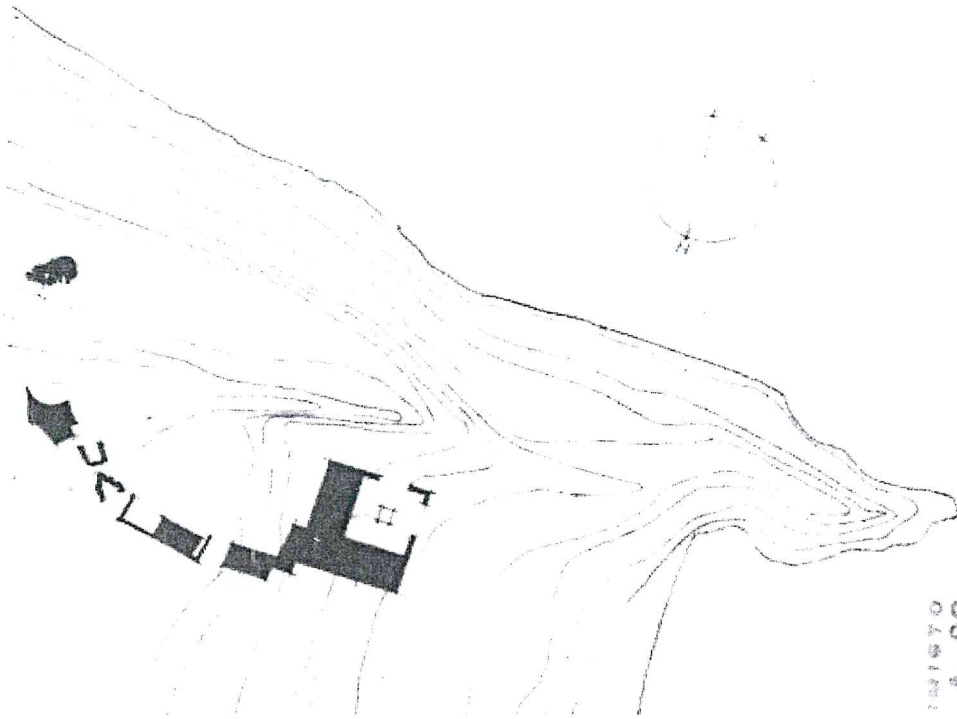
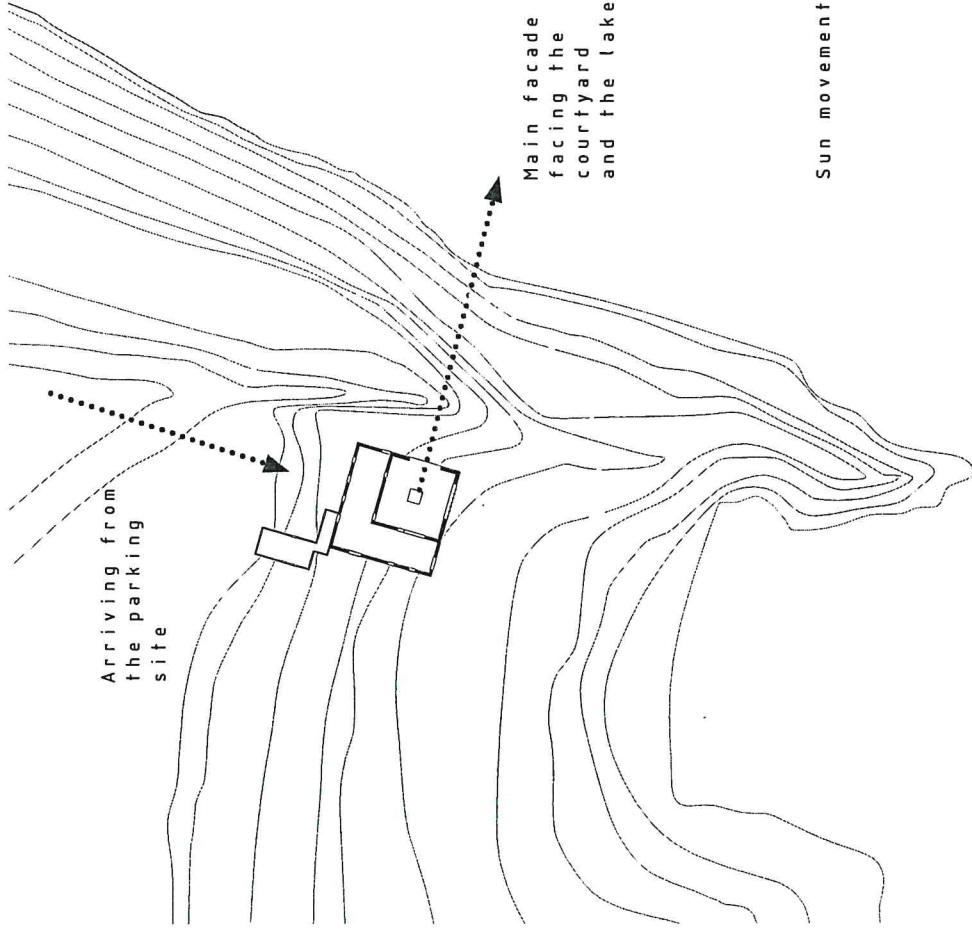
Born in Finland in 1898, Alvar Aalto was a prominent architect through out the 20th century. Starting his career as an architect in the 1920's, he worked in various styles predominantly in the modernist style. The attention to detail in his work is evident as he designed not only the building but everything from the furniture, to the glass ware.

Alvar Aalto in front of the Sauna at Muuratsalo Island



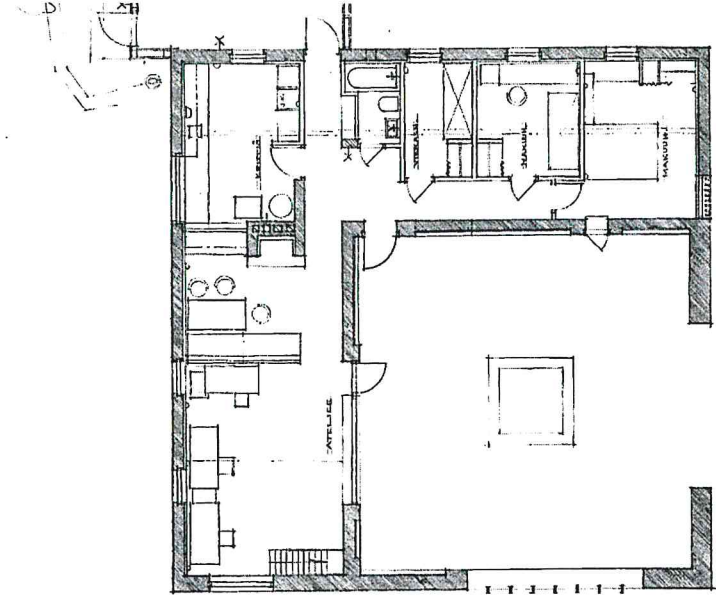
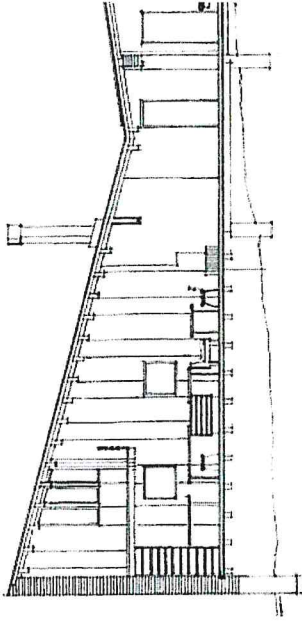
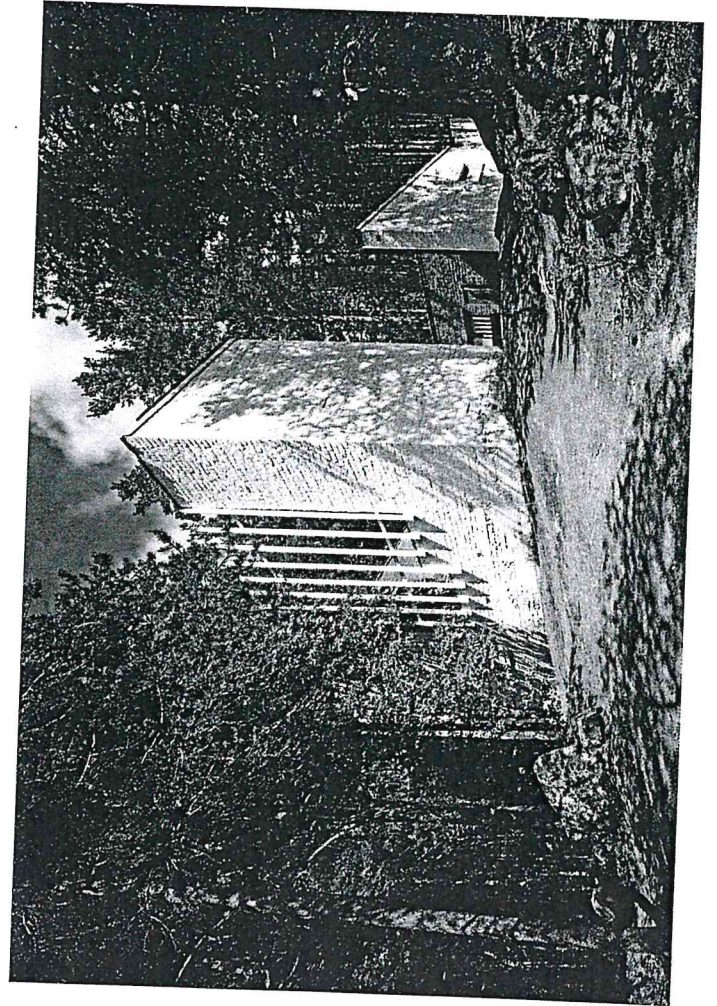


Muuratsalo Island
in Lake Päijänne



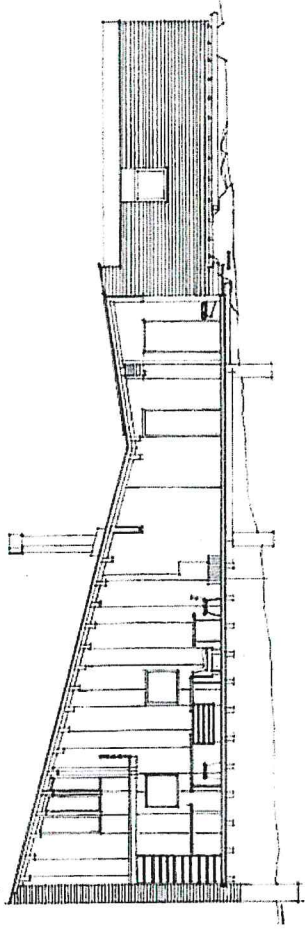
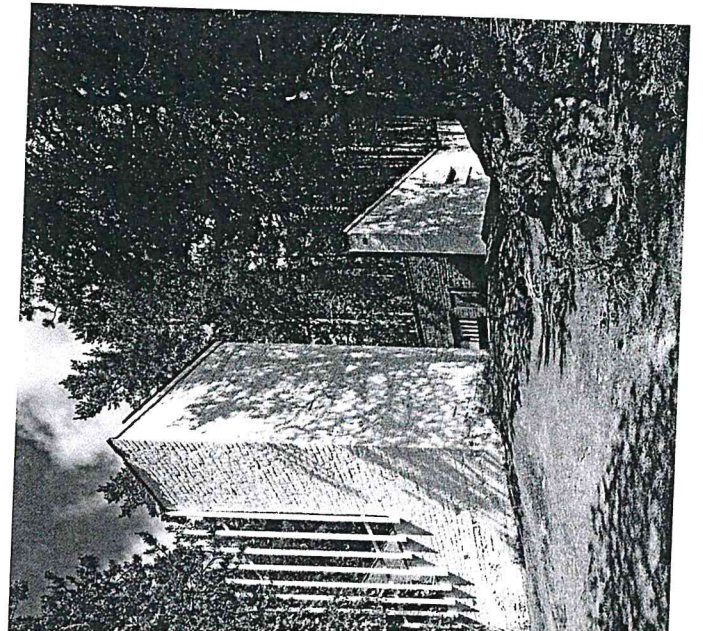
EXPERIMENTAL HOUSE
Muuratsalo, Finland
1952-1953

Aalto described the building as a combination of the study of an architect and an experimental centre for testing techniques and materials. Built in three parts between 1952 - 1953, the main building, the guest house extension and then a series of out buildings. Aalto also built a sauna on the island near the house. The house was Aalto's experiment, using techniques, materials and ideas that were not yet developed enough to be put into practise. The house has a strong connection to the landscape, with large windows allowing daylight and the use of topography to aid the form of the building.

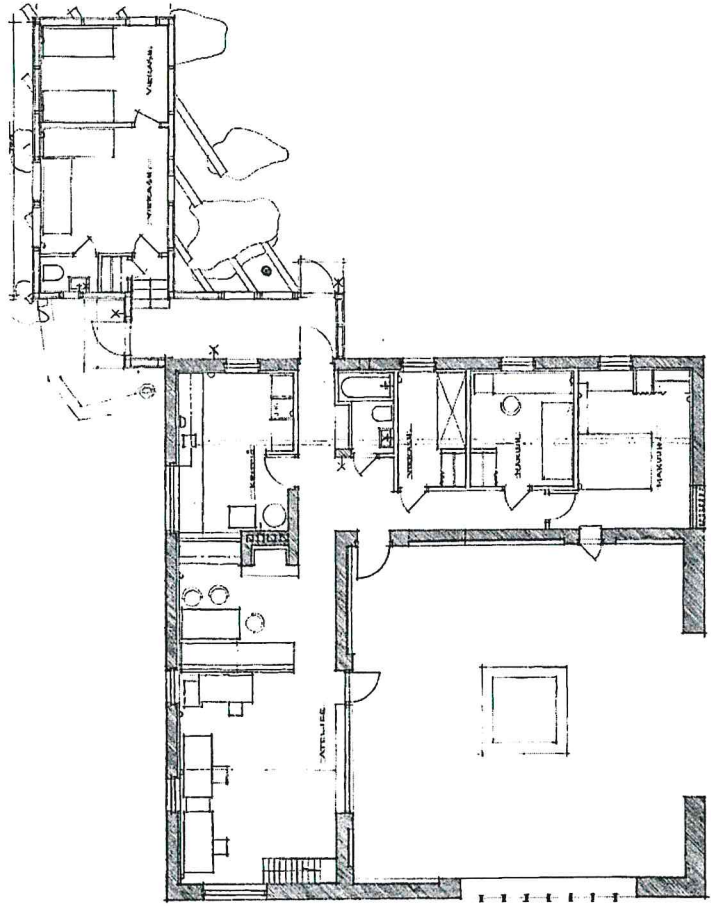


0 | | | | | 5m
Floor

Aalto described the building as a combination of the study of an architect and an experimental centre for testing techniques and materials. Built in three parts between 1952 - 1953, the main building, the guest house extension and then a series of out buildings. Aalto also built a sauna on the island near the house. The house was Aalto's experiment, using techniques, materials and ideas that were not yet developed enough to be put into practise. The house has a strong connection to the landscape, with large windows allowing daylight and the use of topography to aid the form of the building.

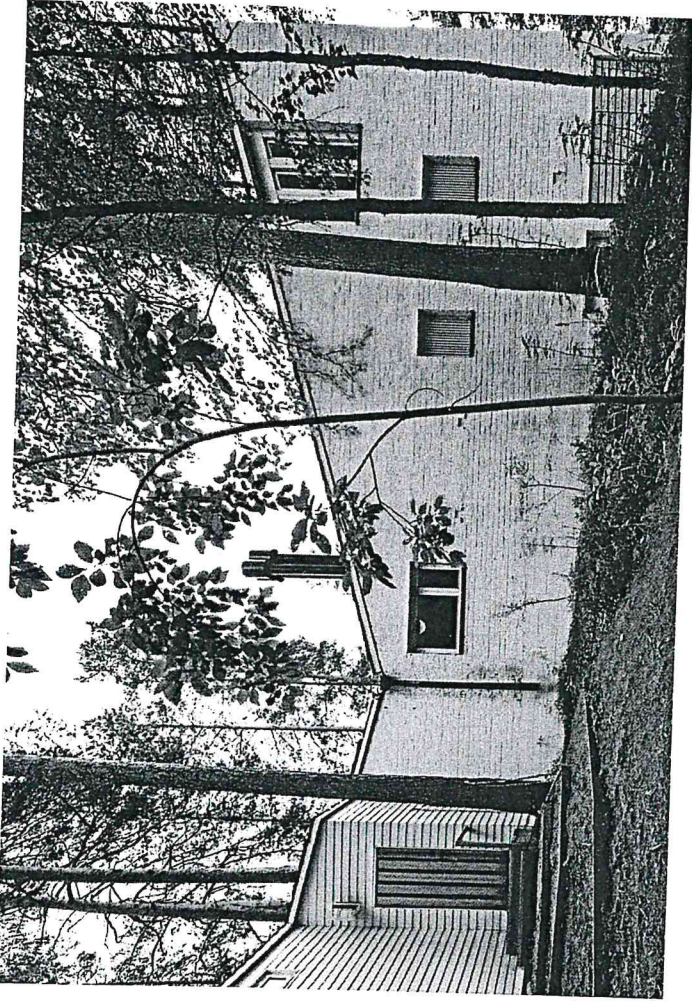


Long Section | 1:200

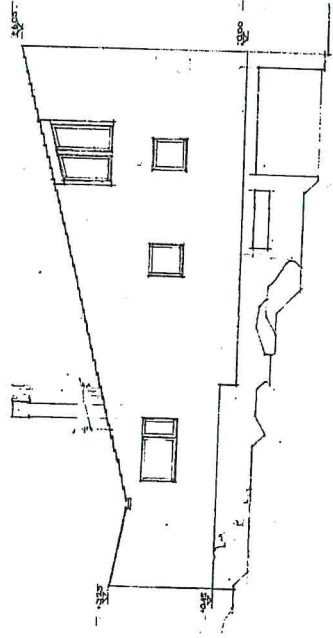


0 | | | | 5m

Floor Plan | Scale 1:200

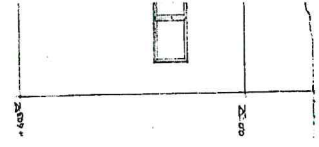
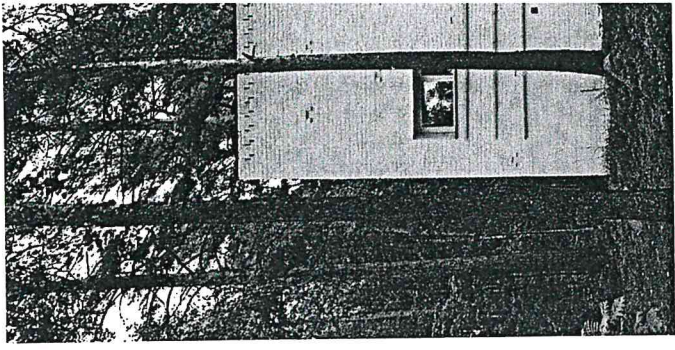


North Facade | Photography

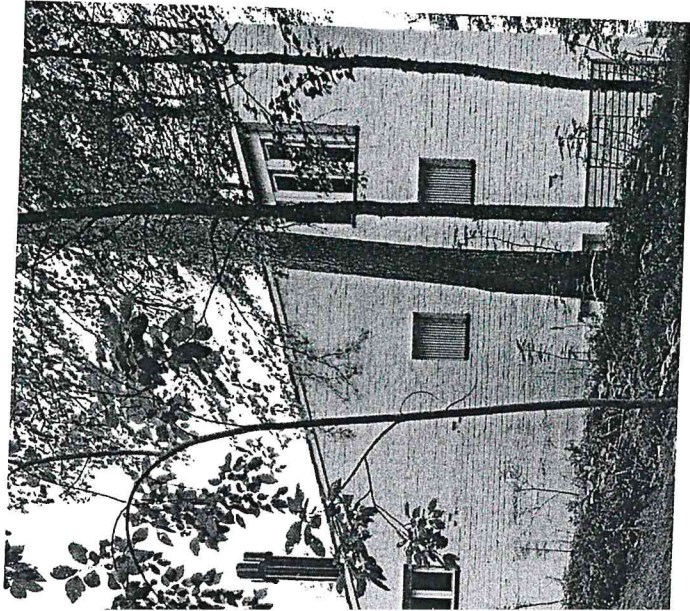


0 | | | | | 5m

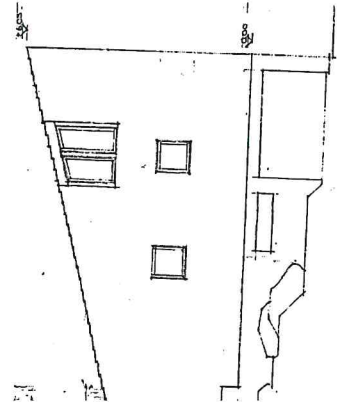
North Facade | 1:200



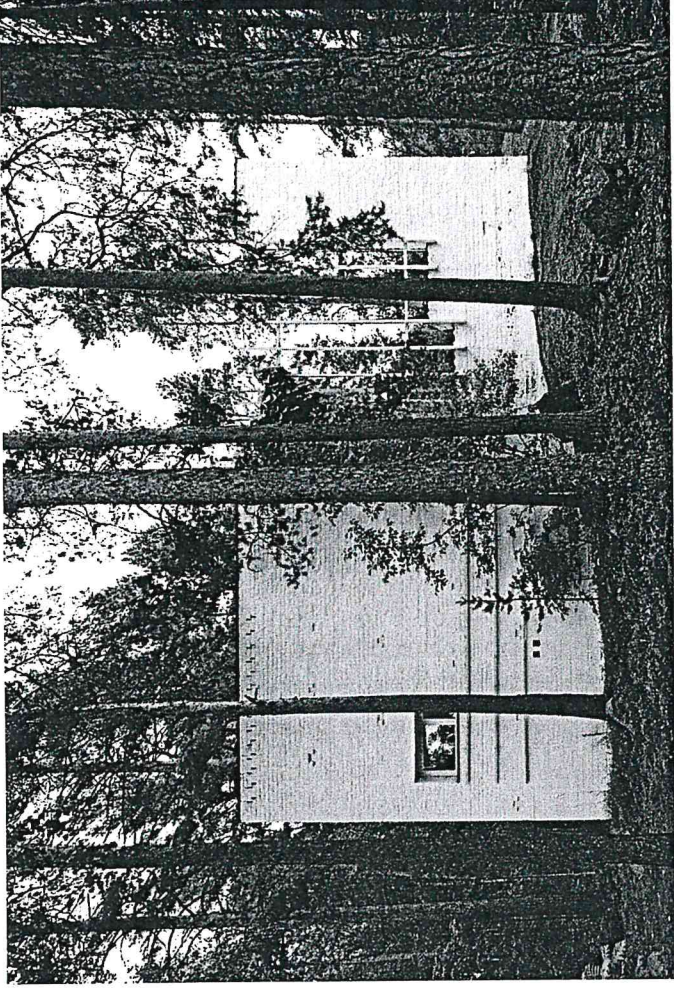
0 | | | | | 5m



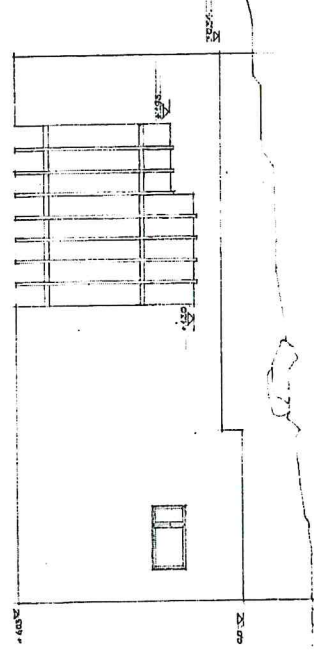
North Facade | Photography



North Facade | 1:200

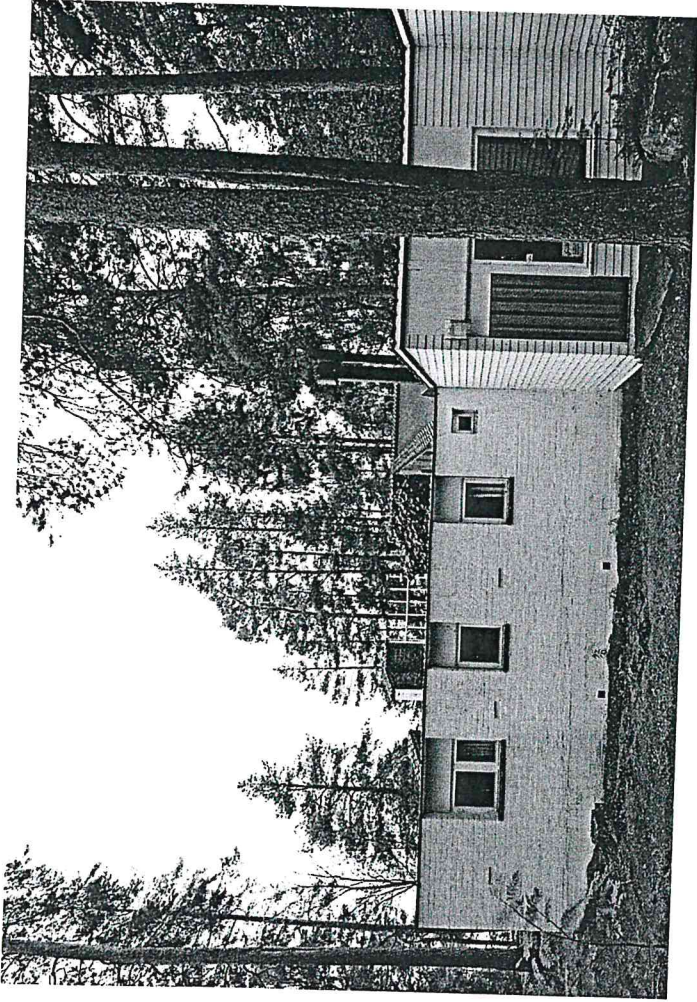


West Facade | Photography

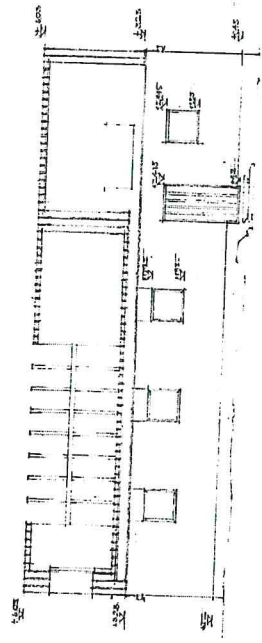


0 | | | | | 5m

West Facade | 1:200



East Facade | Photography



0 | | | | | 5m

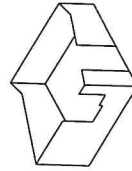
East Facade | 1:200

Shape

Looking at the shape of the main building you recognise that it consists of two facade ribbons merged together. First, the courtyard and second, the outside facade. The double monopitched roof creates an interesting height development within the two shapes. Remarkable is the contrast between the height of the landscape and the building height. It demonstrates the harmonious adaption of the house to the slope as well as Aalto's carefully dealing within the landscape.

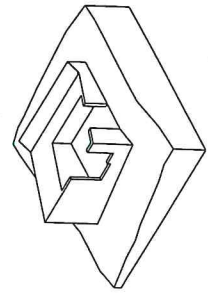


+



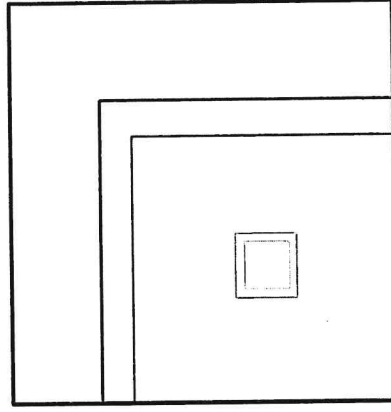
Courtyard Facade and Shape

Outside Facade and Shape



Final Shape and adaption to the slope

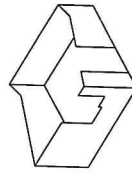
Squares trough scale



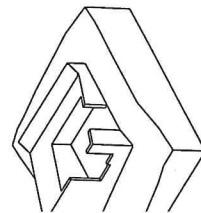
Looking at the shape of the main building you recognise that it consists of two facade ribbons merged together. First, the courtyard and second, the outside facade. The double monopitched roof creates an interesting height development within the two shapes. Remarkable is the contrast between the height of the landscape and the building height. It demonstrates the harmonious adaptation of the house to the slope as well as Aalto's carefully dealing within the landscape.



+



Outside Facade and Shape

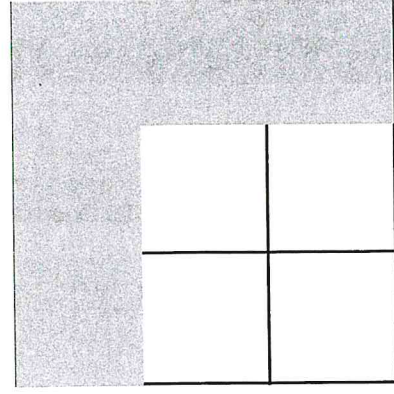
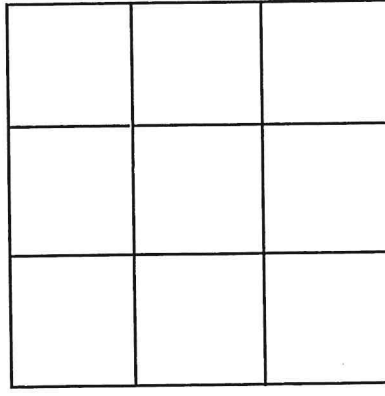
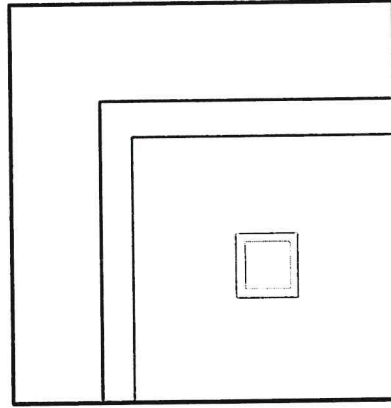


Pe and adaption the slope

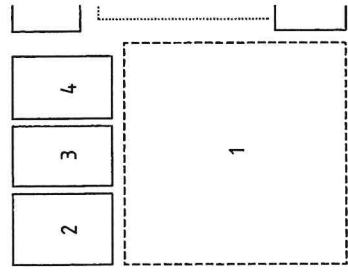
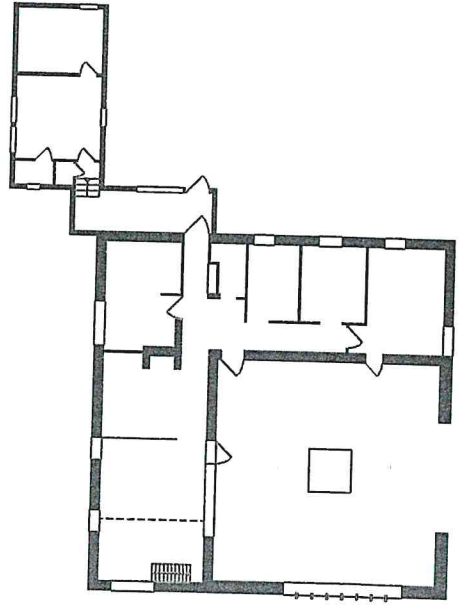
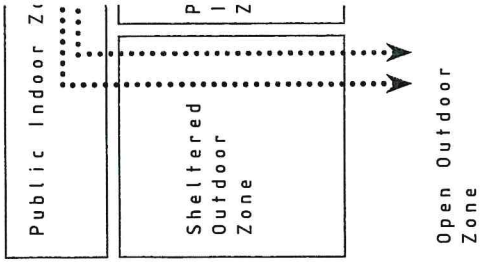
Squares trough scale

The plan of Aalto's Summer House is made up of a series of squares in different scales. From the fire-pit in the centre to the exterior walls, the same proportion of square is used creating an organised, geometric based plan.

The plan is split into a 9 by 9 grid, 5 squares used for the accommodation and 4 for the courtyard.



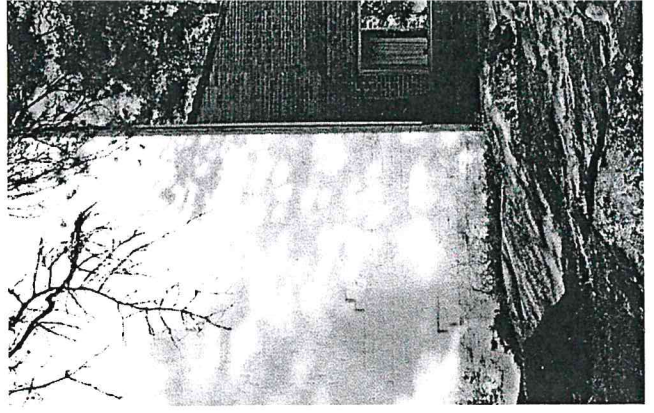
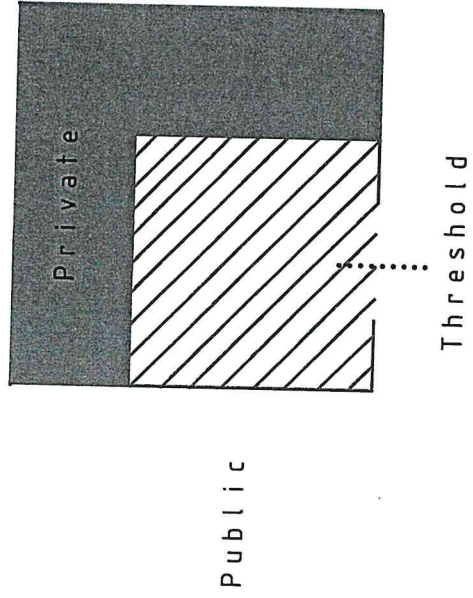
Floor Plan and Program



Sequence of Entrance

The courtyard creates a threshold for the summer house, creating a sequence of entrance. The surrounding walls make it feel like part of the house however it is still connected to the context. It clearly defines the surrounding area from the private area of the house, the courtyard being a threshold that elevates the entrance to the summer house. It also keeps the connection to the forest strong as it brings the context into the private courtyard.

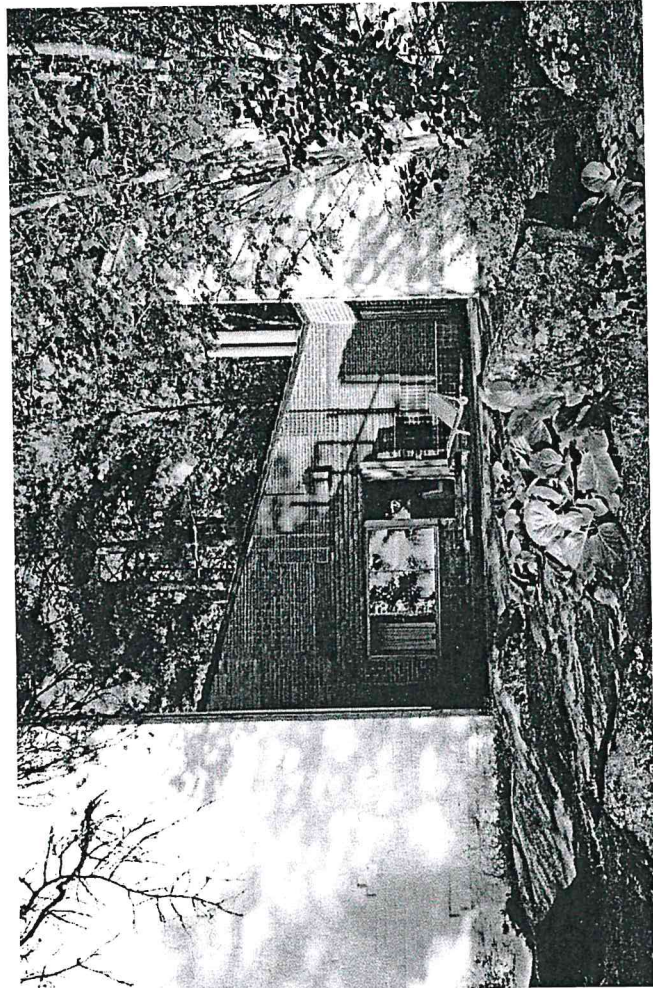
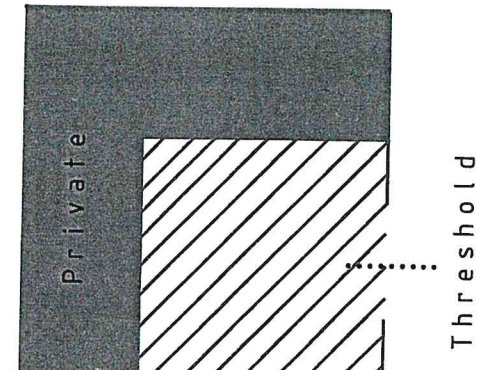
Contrast



Contrast

The outer walls of the summer house, which face the surroundings, are made of rough brick and are painted white. This contrasts sharply with the forest context causing the building to stand out. It also contrasts with the warm brick façades of the courtyard. It emphasises the difference from being outside the building to entering the courtyard threshold. The contrast stresses the sequence of entrance, to pass the white exterior walls, into the red courtyard then into the building itself differentiates clearly being in the building and in the surroundings.

The courtyard creates a threshold for the summer house, creating a sequence of entrance. The surrounding walls make it feel like part of the house however it is still connected to the context. It clearly defines the surrounding area from the private area of the house, the courtyard being a threshold that elevates the entrance to the summer house. It also keeps the connection to the forest strong as it brings the context into the private courtyard.

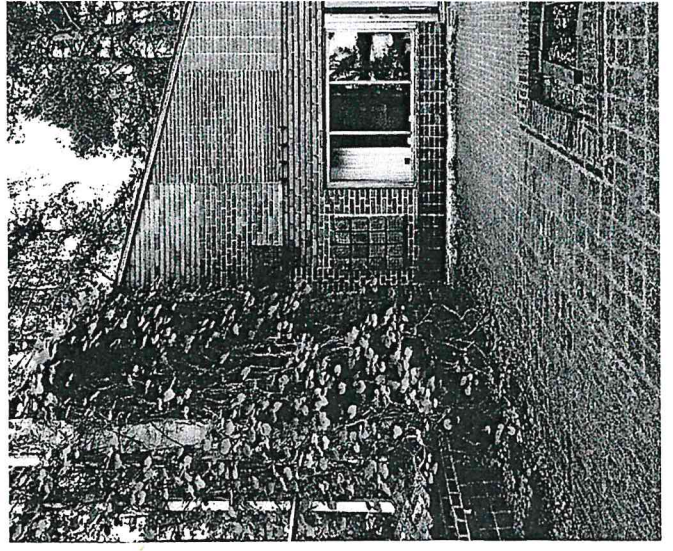
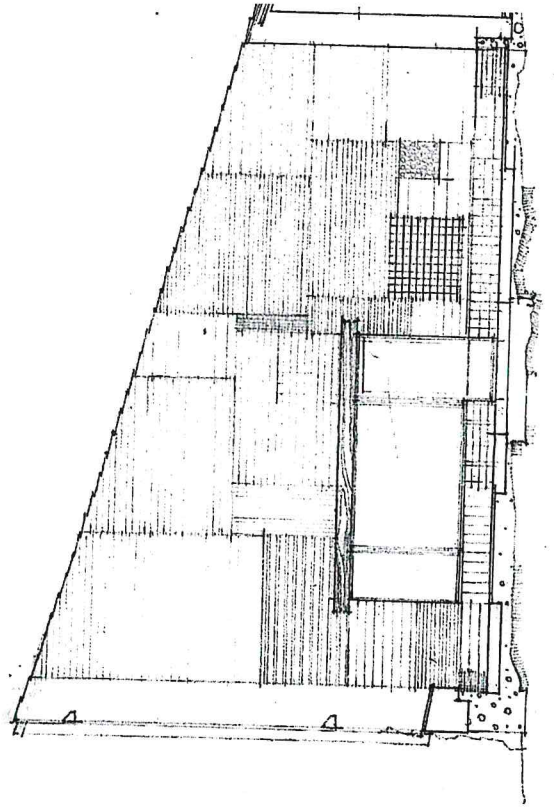


The Courtyard

The façades of the courtyard have over 50 patches of different designs of brick. He used the summer house to experiment with various textures and materials, creating a playful patchwork. The courtyard centres around a fire pit.

"The entire building group is dominated by the fire in the centre of the courtyard, with exactly the same role providing functionality and comfort as a central camp-fire, with the fire, reflected in the surrounding walls of snow, evoking a pleasant almost mystical experience"
- Aalto 1953

There is a sense of warmth within the courtyard, a welcoming entrance into the house.



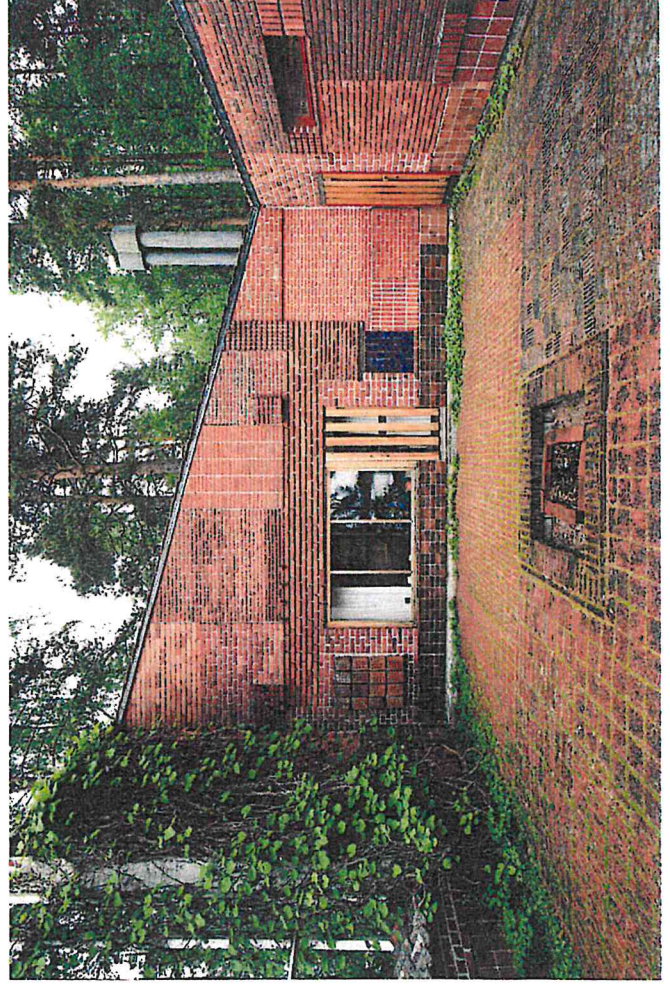
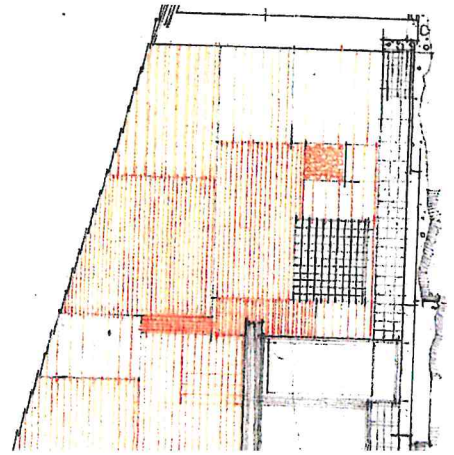
The façades of the courtyard have over 50 patches of different designs of brick. He used the summer house to experiment with various textures and materials, creating a playful patchwork. The courtyard centres around a fire pit.

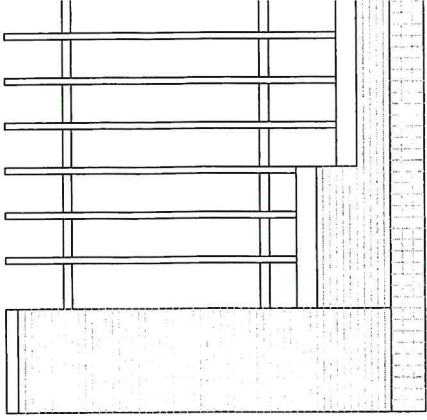
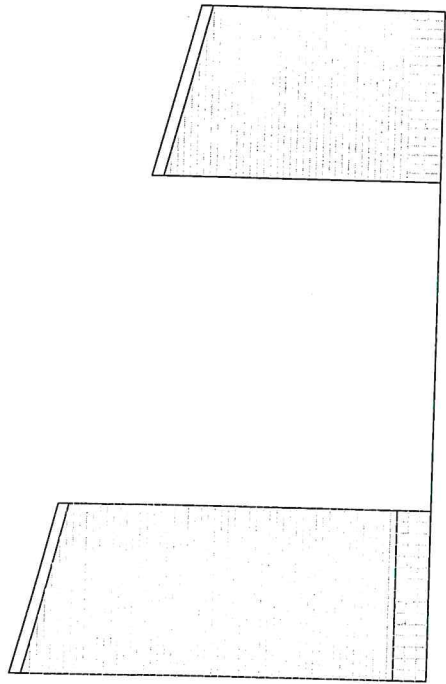
"The entire building group is dominated by the fire in the centre of the courtyard, with exactly the same role providing functionality and comfort as a central camp-fire, with the fire, reflected in the surrounding walls of snow, evoking a pleasant almost mystical experience"
- Aalto 1953

There is a sense of warmth within the courtyard, a welcoming entrance into the house.

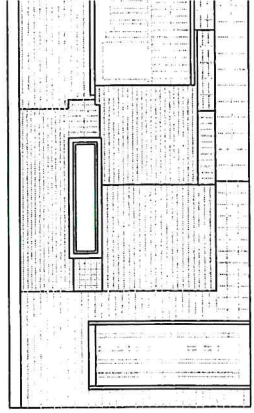
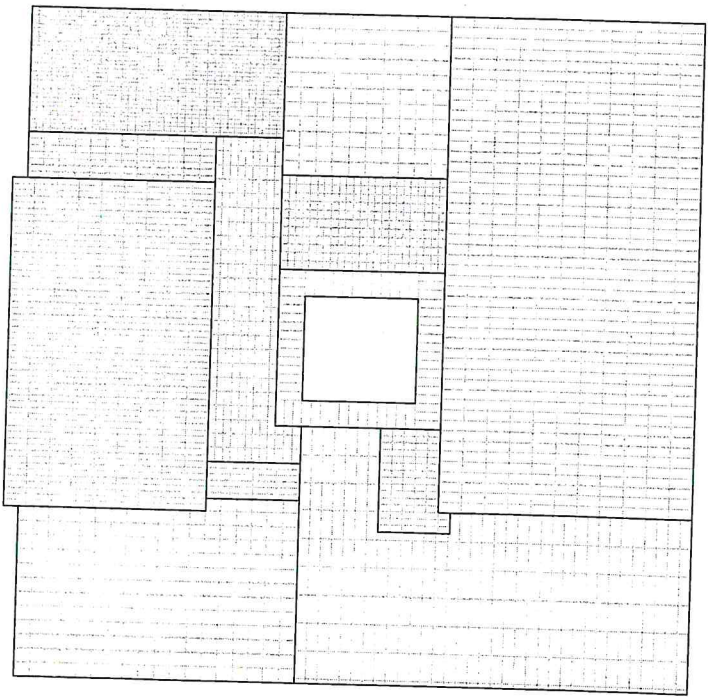
Left: South Facade of
Coutyard - Drawing by
Alvar Aalto | 1:100

Right: South Facade of
Coutyard as it was built





Wes

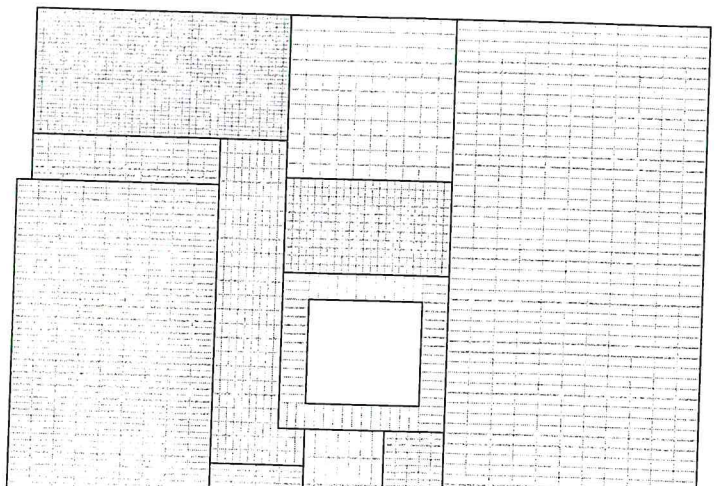
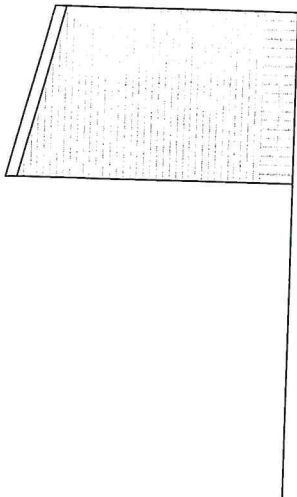


0 | | | | | 2m

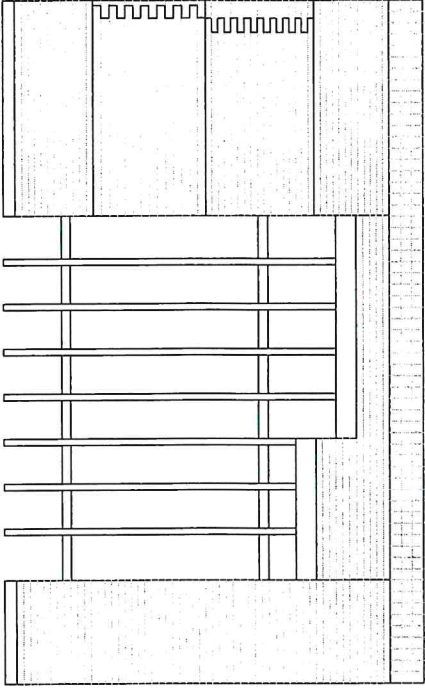
South Courtyard Facade | 1:100

0 | | | | | 2m

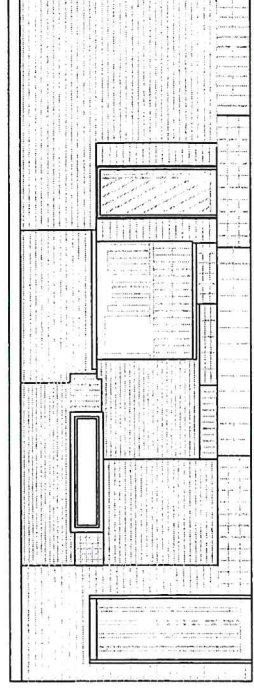
Eas



South Courtyard Facade | 1:100



West Courtyard Facade | 1:100



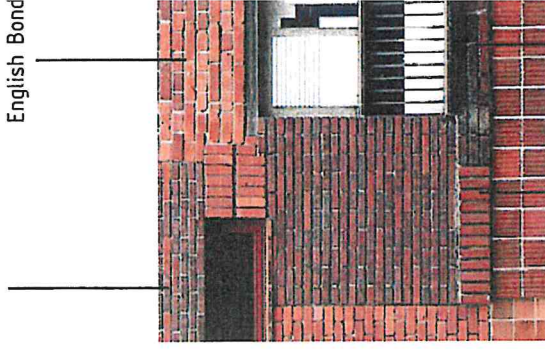
East Courtyard Facade | 1:100



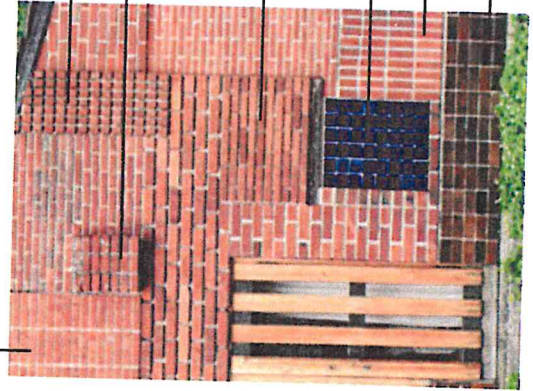
Experimental Techniques

Aalto experimented with various types of brick cladding creating a unique elevation. He used his summer house to test out techniques and observe how they reacted to the extreme climate of the island. Layering different bonding styles of brick and mixing ceramic tiles and timber creates a dynamic and playful façade. As he used different brick types and sizes it creates a warm palette of colours starkly contrasting against the white exterior of the building.

Stretcher Bond, Smaller Scale

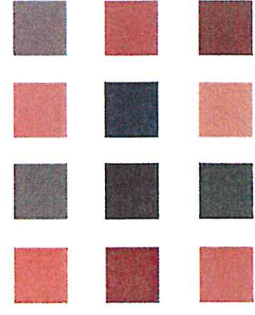


Stack Bond



Stacked Bond

Solider Course

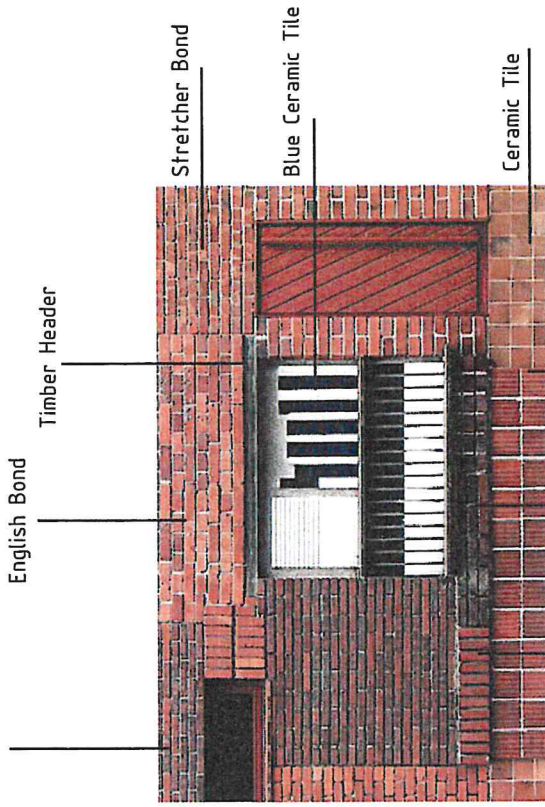


Color scheme developed by bricks used

ues

Aalto experimented with various types of brick cladding creating a unique elevation. He used his summer house to test out techniques and observe how they reacted to the extreme climate of the island. Layering different bonding styles of brick and mixing ceramic tiles and timber creates a dynamic and playful façade. As he used different brick types and sizes it creates a warm palette of colours starkly contrasting against the white exterior of the building.

Stretcher Bond, Smaller Scale



Rowlock Stack Bond

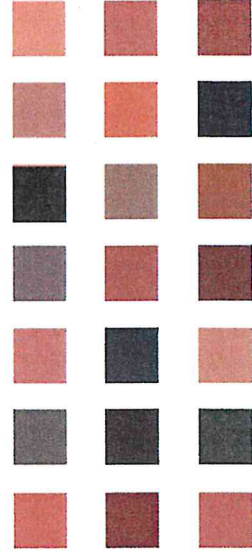
Stacked Bond, Extruded

Smaller Scale Brick, Mortar Joint

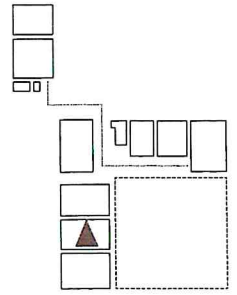
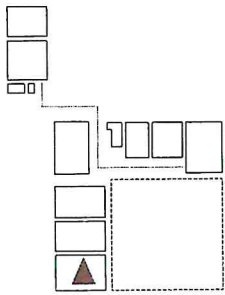
Blue Ceramic Tile

Solider Course Bond

Ceramic Tile



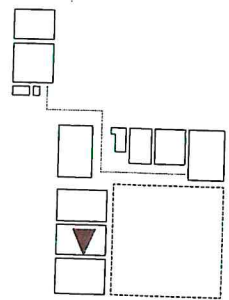
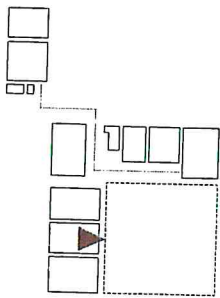
Color scheme developed out of the bricks used by Aalto



View fom atelier to courtyard



View to the gallery





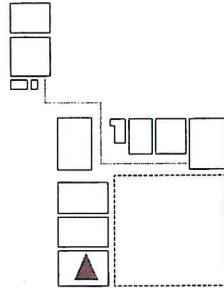
View from atelier to courtyard



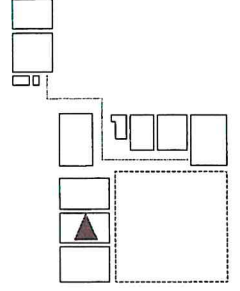
View to the gallery

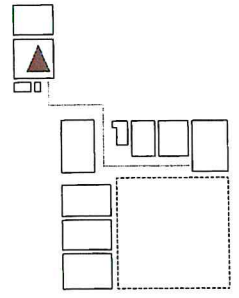
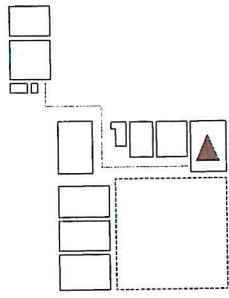


Gallery



Atelier and Dining

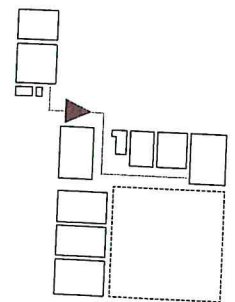
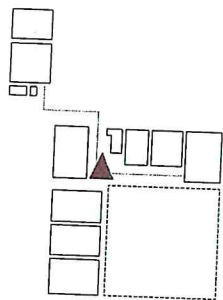




Hall, view to entrance



Connection to guest wing





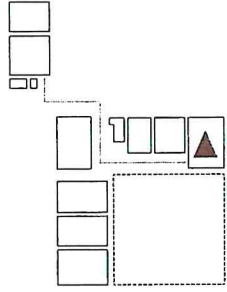
Hall, view to entrance



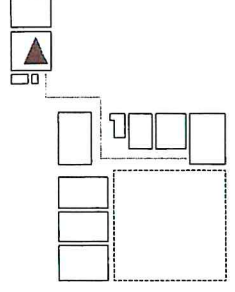
Connection to guest wing



Bedroom



Guestroom



CHALMERS
NORDIC ARCHITECTURE
SPRING SEMESTER 2019

RACHEL MCLURE
STAFFAN LINNÉ
ELISE WICKLEIN
LOVISA EINARSSON

LL