

# Extending Cultural Heritage

The Revitalization of a Disused Industrial Building in Mölndal

Karl-Hector Robertsson

Master Thesis 2024  
Chalmers School of Architecture  
Department of Architecture and Civil Engineering

Examiner | Mikael Ekegren  
Supervisor | Catharina Dahl Palmér



## Extending Cultural Heritage

Author | Karl-Hector Robertsson

Examiner | Mikael Ekegren  
Supervisor | Catharina Dahl Palmér

Chalmers University of Technology  
Department of Architecture and Civil Engineering Master's  
Thesis Direction | Building Design and Transformation  
Master's Programme in Architecture and Urban Design

## Abstract

In today's rapidly evolving world, the demand for technological advancement continues to shape how we live and think. With each new innovation setting fresh standards, it becomes increasingly important to acknowledge and preserve heritage buildings. These structures are more than just remnants of the past—they are vital carriers of cultural identity, providing future generations with a foundation to build upon. Moreover, the preservation of cultural heritage buildings takes on new urgency in the fight against climate change. Demolishing old structures and constructing new ones is a wasteful and unsustainable use of resources.

This thesis explores how a cultural heritage building can be seamlessly integrated into a modern urban context. The focus is a disused industrial building in Forsåker, Mölndal, once part of a historic paper mill that operated for over 300 years and played a significant role in shaping the community's identity.

With plans to transform the former mill area into a new district, the industrial buildings are slated for preservation and adaptation to meet contemporary needs. This thesis proposes how the building can be revitalized to honor its cultural heritage while aligning with the vision for the district's future. Guided by planning regulations and archival drawings from the mill area, this thesis examines how spatiality, materials, and environmental considerations can be utilized to unlock the building's potential and create new architectural qualities.

Keywords: Adaptive reuse, Cultural heritage, Architectural conservation.

## Student Background

<b>Master studies, year 2</b> Building tectonics 2 Master's thesis in Architecture	2023-2024
<b>Veidekke Entreprenad</b> Internship	2022-2023
<b>Masters studies, year 1</b> Matter, space, structure 1 Nordic architecture History, Theory and Method 2 Public Building	2021-2022
<b>Chalmers University of Technology</b> Bachelor's studies	2018-2021

## Table of Content

### 1. Introduction

Aim & Objective	6
Research Questions	6
Method	7
Delimitations	7
Adaptive reuse & Cultural Heritage	8

### 2. Reference Projects

Gjuteriet	12
Holmebladsgade Culture Center	14

### 3. Background

Historic Context	18
The Site Today	20
Future Plans	22
Building 18	24
Present-Day Facades	26

### 4. Design Proposal

Initial Sketches	32
The New Site	34
New Interventions	36
Program & Space	38
Interior Wall Construction	62
Detailed Drawing	64
Illustrations	70

### 5. Conclusion

Discussion	76
------------	----

### 6. Bibliography

1.

## INTRODUCTION

## Aim & Objectives

Cultural heritage buildings have taken on a renewed significance in contemporary architectural discourse, particularly as the pressing realities of climate change drive a growing focus on sustainability and reuse. The reuse of existing structures, especially those of historical importance, presents both a challenge and an opportunity: how can these buildings be adapted to meet the evolving needs of society without compromising their unique character and identity? This thesis delves into the delicate balance between preserving the past and embracing the future, examining how cultural heritage buildings can be thoughtfully revitalized to serve contemporary purposes while safeguarding the essence of their history.

## Research Questions

*How can a disused industrial building be revitalized with respect to its cultural heritage?*

*How can the structure of an old industrial building be adapted to meet contemporary needs while also anticipating the demands of future society?*

## Method

In the initial stages of this thesis, a thorough analysis of the building was conducted. The building's history, location, and distinctive characteristics were systematically mapped and examined to form a solid foundation for the design process. This analysis and inventory involved site visits, as well as a review of historical drawings, photographs, and literature related to the building and its context. Based on the insights gained during this preliminary phase, the building's function was determined, which subsequently informed the design of an extension. The design process employed a combination of volumetric studies, technical drawings, sketches, 3D modeling, and physical models to explore and refine the proposed intervention.

## Delimitations

This thesis excludes detailed economic and structural calculations, focusing instead on generalized and conceptual analyses. All proposals adhere to the existing detailed development plan, without considering ongoing development proposals for the building.

## Adaptive Reuse & Cultural Heritage

Cultural heritage holds a unique power to bridge the past and the future, playing a vital role in fostering sustainable development. By preserving, utilizing, and reimagining these resources, heritage not only contributes to economic growth and environmental sustainability but also strengthens social cohesion. Cultural heritage provides a wide range of contributions, spanning from clearly measurable economic benefits to more nuanced and intangible, yet equally significant, aspects such as the promotion of cultural identity and a sense of belonging. It thus functions not merely as a material resource but as a fundamental source of meaning and social cohesion in contemporary society (Riksantikvarieämbetet, 2017).

The preservation of cultural heritage buildings is beneficial for environmental sustainability. Renovating existing structures generally requires less energy than new constructions. According to the construction industry, annual greenhouse gas emissions from building processes are estimated to be equivalent to the total emissions from all passenger cars in Sweden, amounting to approximately 10 million tons of carbon dioxide per year. (Riksantikvarieämbetet, 2017).

In the article Adaptive Reuse of Heritage Buildings: From a Literature Review to a Model of Practice, adaptive reuse is described as “the process of converting a building to a function which is significantly different from the original function” (Arfa, Zijlstra, Lubelli, & Quist, 2022, p. 150). This method seeks to repurpose existing buildings for new uses while maintaining their historical and cultural significance.

The process is structured into four main phases: the pre-project phase, the preparation phase, the implementation phase, and the post-completion phase. The pre-project phase involves crucial decisions regarding whether a building should be preserved, repurposed, or demolished. It includes initial evaluations and the identification of stake holders who will participate in the project (Arfa et al., 2022).

During the preparation phase, the focus shifts to detailed analysis and planning. A comprehensive design strategy is formulated to guide how the building will be adapted to its new purpose. Key tasks in this phase include documenting the building’s history, evaluating its reuse potential, and assessing its cultural and architectural values. The implementation phase puts the design strategy into practice. This stage involves making the necessary physical changes to the building and addressing any challenges that arise during the process. Finally, the post-completion phase emphasizes the building’s long-term sustainability and value. It includes the development of maintenance plans and an evaluation of the project’s outcomes, such as user satisfaction and the building’s economic and environmental impact (Arfa et al., 2022).

Throughout these phases, multiple stakeholders are involved, requiring a careful balance between preserving the building’s heritage and meeting contemporary needs. This structured approach ensures that adaptive reuse contributes to both the conservation of historical values and the building’s functionality in modern contexts (Arfa et al., 2022).



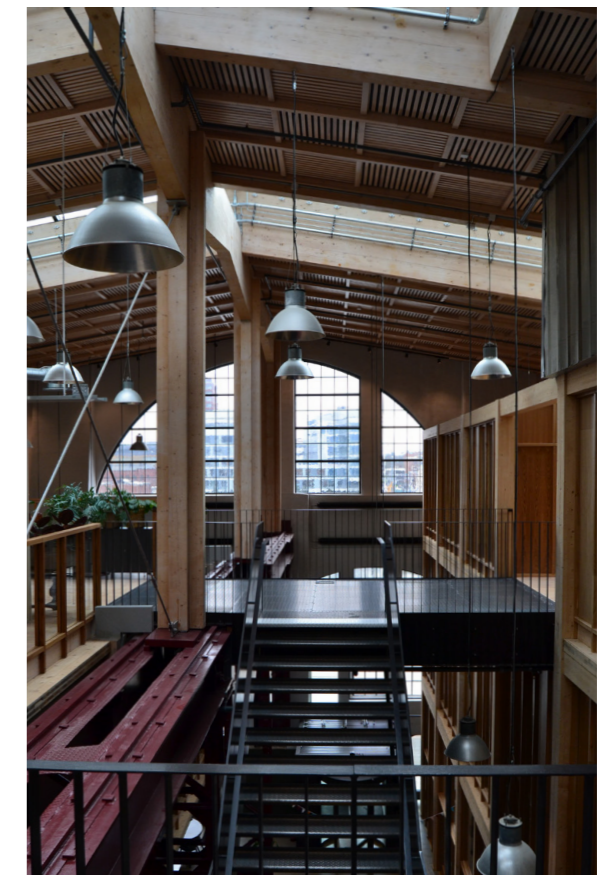
Factory building converted into a café at Nääs Fabriker

2.

**REFERENCE PROJECTS**

## Gjuteriet

Gjuteriet, designed by Kjellander Sjöberg, is a compelling example of how architecture can breathe new life into industrial heritage. True to its name, the building was originally a foundry where ship parts were cast. After standing abandoned for several years, it has been transformed into a vibrant office space and now serves as the headquarters for Oatly. The renovation honors the building's historical essence while adapting it for modern use. Rather than opting for complete demolition, the project embraced a sensitive approach to preservation. Portions of the original facades were encapsulated with a new brick layer, thoughtfully designed to complement the old structure. The perforations in the outer brick layer frame the original window openings, revealing glimpses of the past and celebrating the building's industrial legacy. To enhance structural stability, glulam elements were introduced into the interior, adding both strength and warmth to the space. The interior design creates a dynamic environment with varied spatial layouts, offering flexible workstations and inviting meeting areas tailored to the needs of the office's employees.



Exterior and interior of Gjuteriet

## Holmebladsgade Cultural Center

The cultural center on Holmebladsgade is another striking example of old meeting new, where a historic brick building has been reimaged with the addition of a sleek, glazed wooden structure elevated on columns. The original joists have been removed to create an impressive double-height entrance hall, with the remaining visible load-bearing elements adding a sense of structural dynamism. Inside, the interplay of materials is showcased beautifully, as the glass facade is elegantly suspended from the wooden structure using metal brackets, blending precision engineering with a light, airy aesthetic. This thoughtful design highlights the dialogue between tradition and modernity, crafting a space that feels both grounded in history and open to the future.



Exterior and interior of Holmeblads Culture Center

3.

**BACKGROUND**

## Historic Context

Around 1830, papermaking in Mölndal underwent a significant transformation, shifting from a traditional craft to industrial production. During this period, Mölndal's Kvarnby experienced rapid industrialization and economic growth. The rapids in the valley provided a vital source of power, enabling industries to establish themselves in the area (Lindholm Restaurering AB, 2015).

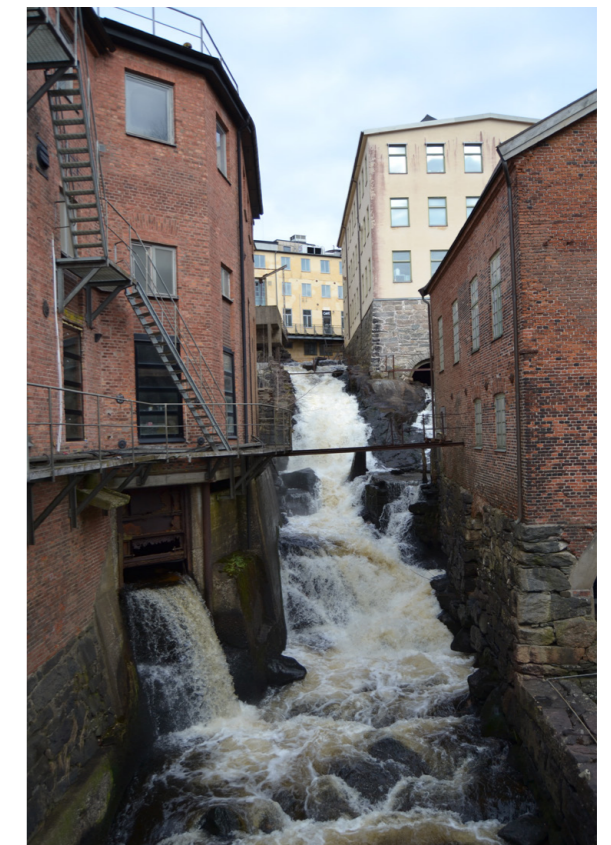
The history of the paper mill can be divided into four distinct construction phases. Initially, development was concentrated around the rapids. However, with the advent of electricity, industrial operations could expand beyond their original boundaries. The first major expansion, spanning approximately 1895–1929, saw the replacement of older factory buildings with new structures. This densification of the area included new buildings designed to stylistically align with the older brick architecture of the region. The second phase, from around 1930 to 1960, was marked by the rise of functionalism. Many of the older industrial buildings were replaced with modern structures reflecting the architectural trends of the era. Larger production facilities and office spaces replaced smaller factory and residential buildings. The final expansion phase, lasting from 1961 to 2005, focused primarily on efficiency. Renovations and additions dominated this period, with aesthetic considerations taking a backseat to production needs. Architectural ideals that had previously influenced the area's development were no longer prioritized, signaling a shift towards a purely functional approach (Lindholm Restaurering AB, 2015).



Fig 1. Papyrus fabriksområde från syratornet. Vinterbild.

## The Site Today

The old mill area is situated in a valley, surrounded by significant variations in elevation, with the village development shaped organically by the area's natural topography. This progression can be observed in the smaller-scale settlements extending northward toward the mountains and transitioning through the mill area down to Mölndal's bridge. Today, the mill area reflects its historical evolution through a diverse range of architectural styles. The facades, constructed from materials such as plaster, concrete, brick, and sheet metal, narrate the story of the site's expansion over time. The development of the industrial environment has resulted in a densely built area characterized by varied site formations and street-like lanes that convey an urban atmosphere (Lindholm Restaurering AB, 2015).



Various building types in the area.

## Future Plans

Ambitious plans are underway for the disused industrial area, envisioning its transformation into a vibrant new district in Mölndal. The development will include approximately 3,000 new homes and 4,000 office spaces. A key focus of the project is the preservation and adaptive reuse of the historic industrial buildings, ensuring that the rich history of the site remains integral to its future identity. In total, around 18,000 square meters of historic structures will be revitalized, with Building 18 among those set to be repurposed (Forsåker, n.d.).

At the heart of the redevelopment is the rapids that flow through the area, which currently remain largely obscured beneath overbuilt sections. The plan aims to fully expose the rapids, creating a natural centerpiece for pedestrian pathways and tranquil spaces for relaxation. The vision is to establish the area as a significant hub in western Sweden, offering inspiring environments brought to life through vibrant communities and shared experiences. On November 23, 2023, the development plan received approval, with construction anticipated to commence in 2025 (Forsåker, n.d.).



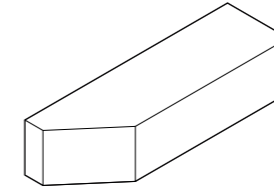
Fig 2. Industriområde med industribana.

## Building 18

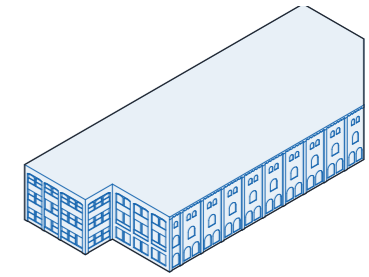
Building 18 is a rectangular structure partially embedded underground, with its ground floor set halfway below the surface. The building spans five floors and is constructed with a reinforced concrete skeleton. Its facade is plastered, with brickwork featured beneath the window parapets. The plaster, composed of coarse natural stone ballast, and the large cast-iron window bars are defining features of the building's identity. Even the windowsills are crafted from cast iron. The southern facade is now smooth-plastered, while the eastern facade remains blank following the demolition of the adjoining structure, Building 19 (Lindholm Restaurering AB, 2015).

The precise construction year of Building 18 is uncertain, but records suggest it was built sometime between 1846 and 1886. Over the years, the building has undergone several renovations, with visible traces both on its exterior and interior. Notable remnants include the tin-covered upper floor and the interior pillar structure, which reveals the diagonal gable facade of the original design. Historically, the building was used for chrome plating and paper sorting, serving as the final destination for large paper rolls before they were prepared for shipment. Historical photographs highlight how the expansive windows allowed natural light to flood the interior, creating an efficient workspace for employees (Lindholm Restaurering AB, 2015).

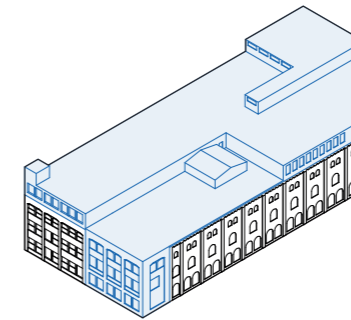
Under the current development plan, Building 18 is approved for the addition of two new floors. The plan also permits an extension on the eastern facade, along with two stair towers to facilitate vertical circulation between the building's levels.



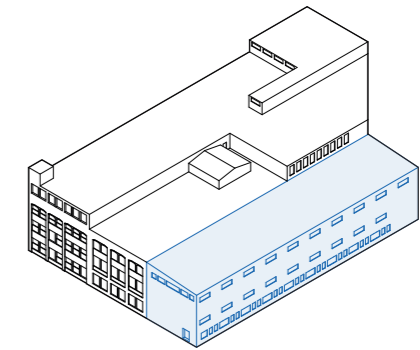
**1846-1886**  
the older chrome plating factory is built.



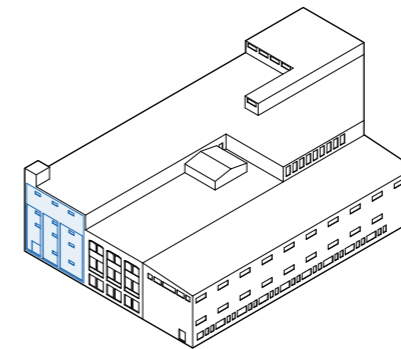
**1909 - 1916**  
The factory is expanded with building 19 and renovated.



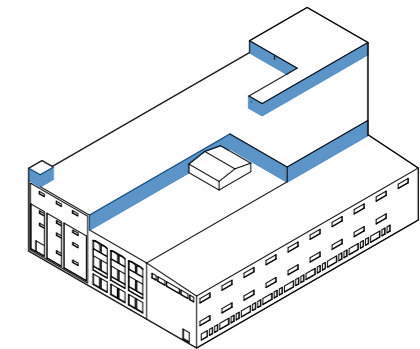
**1930**  
Floors four and five is added.



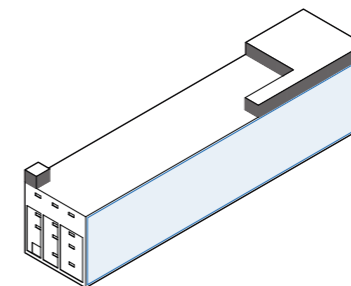
**1962**  
The factory is extended with building 20.



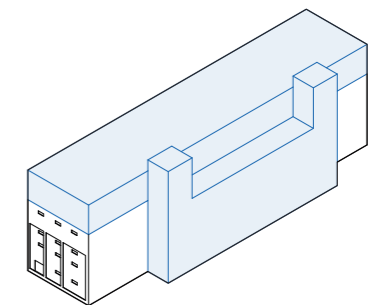
**1968 - 1970**  
The windows on the southern facade are replaced with concrete glass windows.



**1976 - 2006**  
The superstructure is clad in sheet metal.



**2016**  
Building 19 & 20 is demolished.



**2025 - ...**  
The building is to be added with a new extension.



East facade



North facade



West facade



South facade

## Present-Day Facades

Today, the building appears fragmented and altered, yet its facades retain subtle traces of its former grandeur, telling the story of its rich history. The eastern facade, with very few openings, presents a closed and solid appearance. The existing openings have been sealed with metal plates, a reflection of its past connection to the now-demolished Building 19. However, on the third floor, relief details

delicately outline the placement of the original windows, providing a glimpse into the building's architectural past. The northern facade offers a striking contrast, with almost the entire surface clad in metal sheeting. In areas where the cladding has been removed, patches of the original yellow stucco emerge, hinting at the building's earlier character and adding texture to the overall facade. Meanwhile,

the western facade stands out as the best preserved, retaining many of its original cast-iron windows. These windows not only highlight the craftsmanship of the time but also serve as a testament to the building's industrial heritage. In contrast, the southern facade has undergone significant renovation and differs considerably from the other facades. While its openings are few, they are

filled with concrete glass, adding a modern touch to the building's exterior. Notably, both the western and southern facades feature a walkway connecting the building to the adjacent Building 110, which is slated for demolition in the near future. Together, these facades encapsulate a blend of historical preservation, modern intervention, and the enduring impact of industrial architecture.



Current condition of the southern facade.



The interior with its concrete column structure.



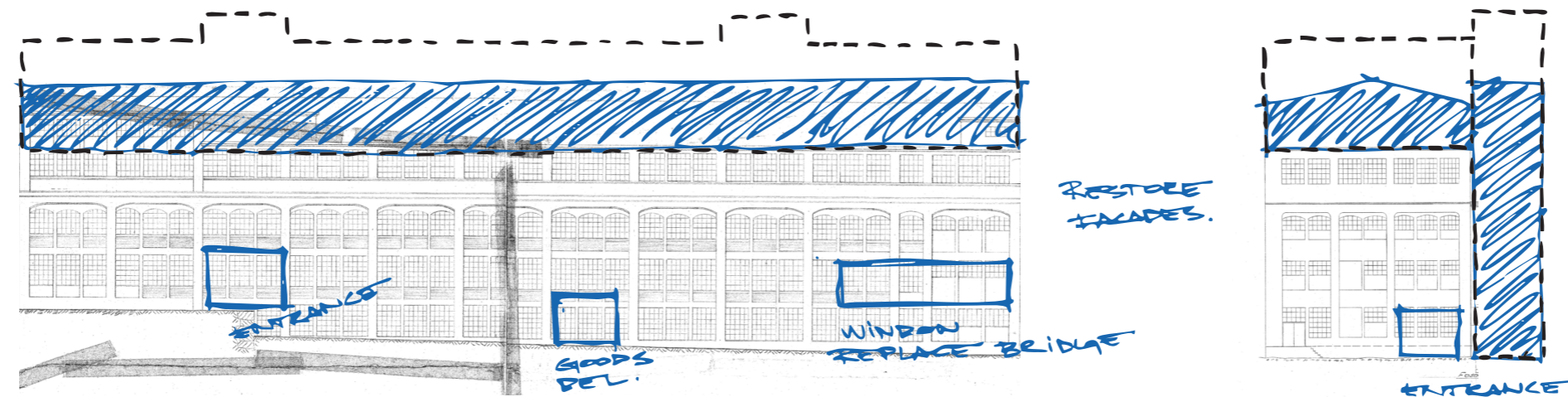
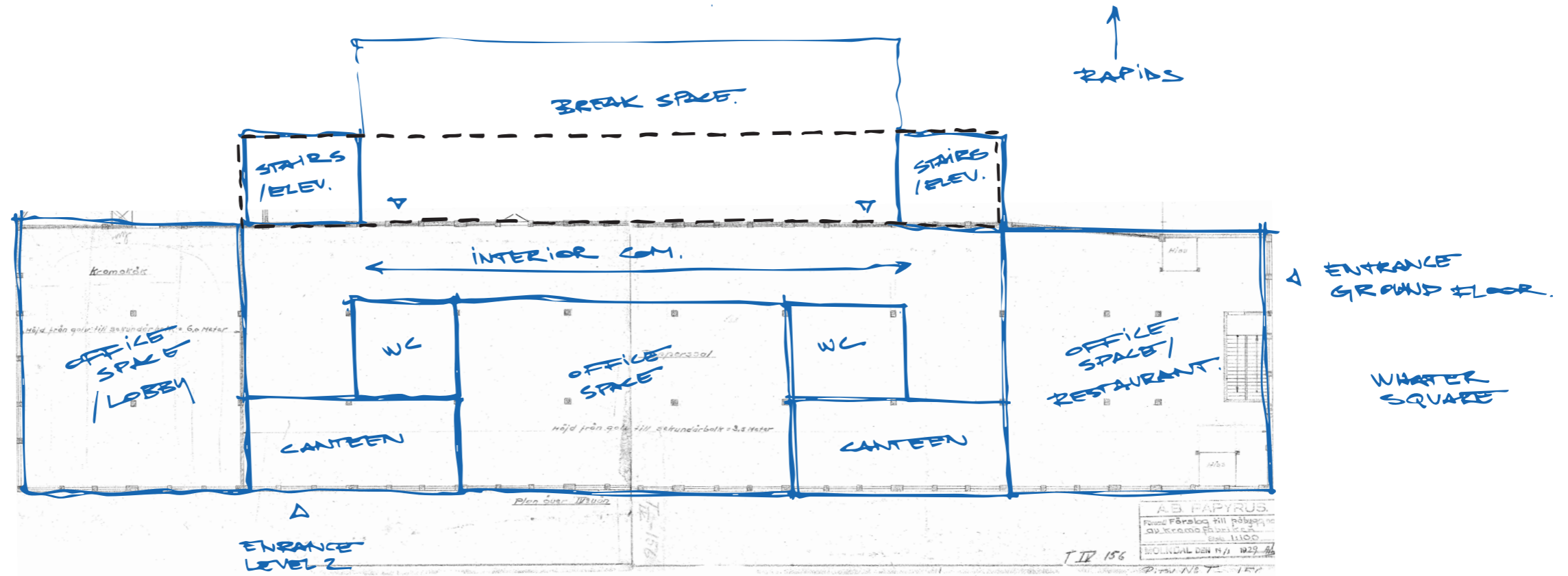
Iron-cast windows of the east facade.



Arched windows on the third floor.

4.

PROPOSAL



## Initial Sketches

In the initial stages of the design process, sketches played a crucial role in exploring how the building's various functions could interact with its regular column structure. This systematic approach allowed the modular layout to guide the placement of fixed functions, ensuring consistency across all office floors. By anchoring the design to this structural logic, it became possible to create

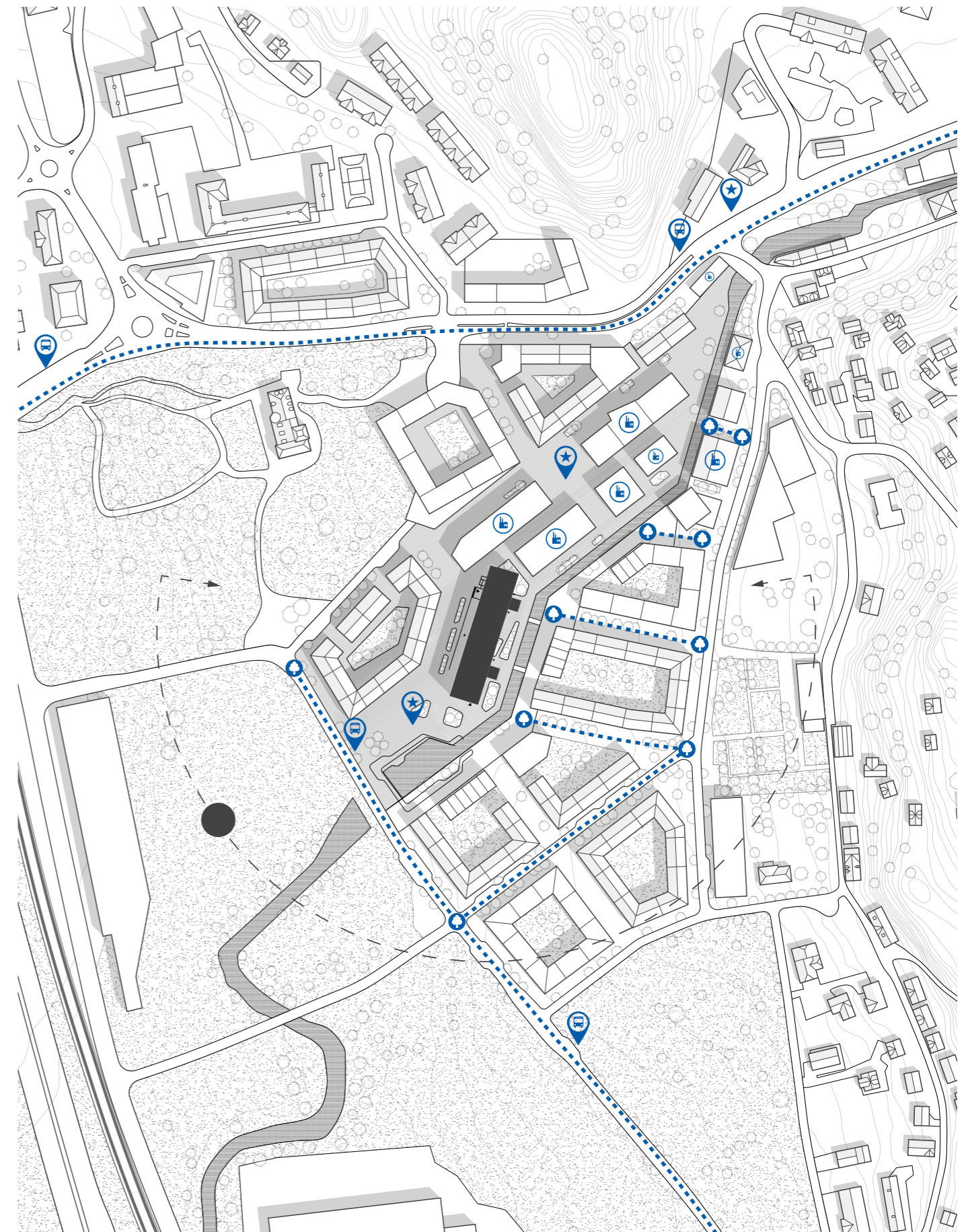
clear and straightforward diagrams illustrating how the different functions harmonize within the space. In the top drawing, the blue lines symbolize the overall division of functions within the building, providing a visual framework for understanding how the spaces are organized. Meanwhile, the black dashed lines delineate the permissible extension boundaries. The lower sketches highlight

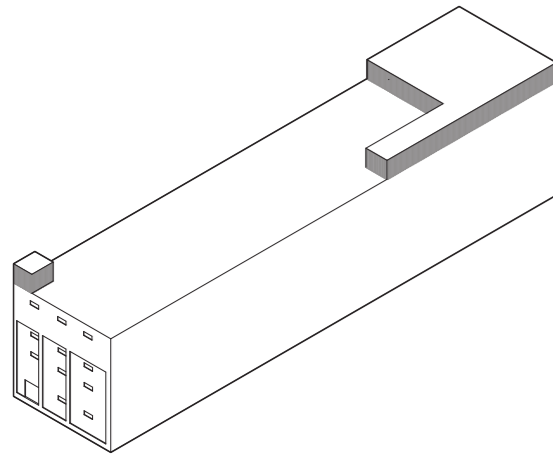
some of the most significant interventions in the design, represented in blue. The dashed lines here also indicate the allowable extensions. Volume studies and overlays of new and old drawings became essential tools in shaping the design approach. These analyses revealed that fully utilizing the extension rights would risk overpowering the original architecture. Instead, a deliberate decision was

made to exercise restraint, allowing the new additions to complement rather than dominate the building's historical framework. This careful balance between past and present ensures that the design respects the integrity of the original structure.

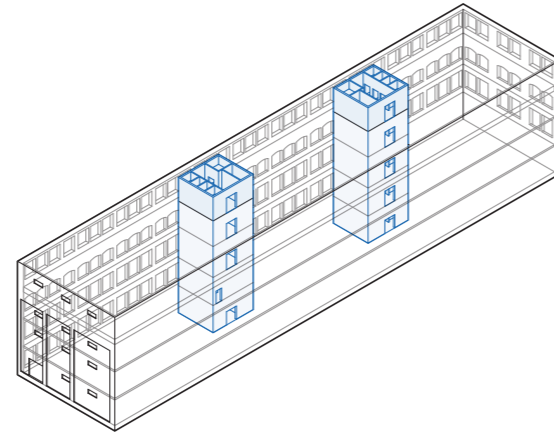
## The New Site

The site has been transformed into a vibrant mix of residential blocks with courtyards and commercial buildings, including offices, educational facilities, and spaces for cultural activities. The buildings range from three to six stories in height, with most constructed of brick or plaster, creating a cohesive yet varied architectural expression. The majority of visitors approach the site from the southwest, where stops for local traffic provide easy access to the area. From the east, green walking paths meander through the residential blocks and intersect with the rapids that flow through the site, forming a natural spine that ties the area together. These paths offer a tranquil contrast to the urban environment, seamlessly connecting the built and natural elements. What was once the industrial floor of the factory area has been reimagined as pedestrian streets lined with squares, creating inviting spaces for residents to meet and gather. These new streets and plazas retain echoes of the site's industrial past while establishing a fresh identity as a lively and connected neighborhood.

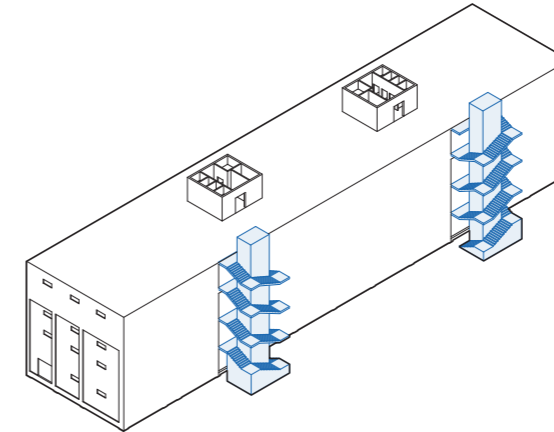




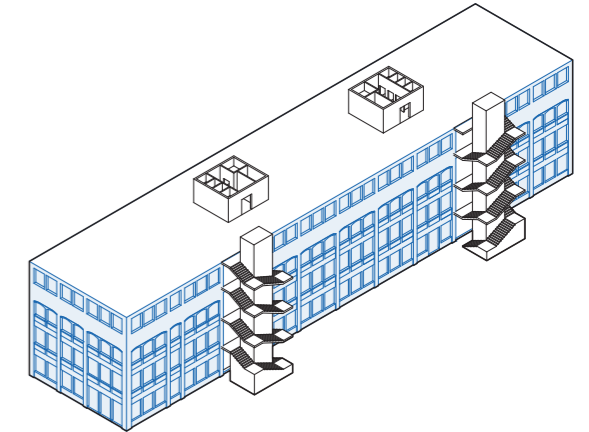
Point of departure.



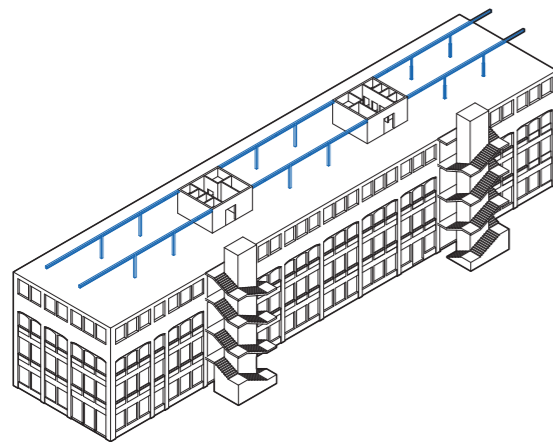
**Step 1**  
Two stabilizing towers is added for installation stems.



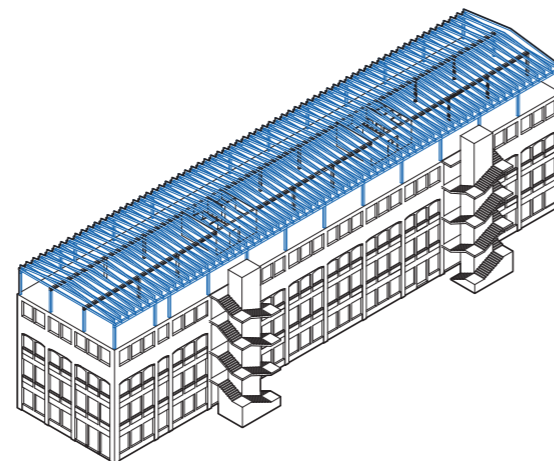
**Step 2**  
Two external stair towers is added to make more office space in the building.



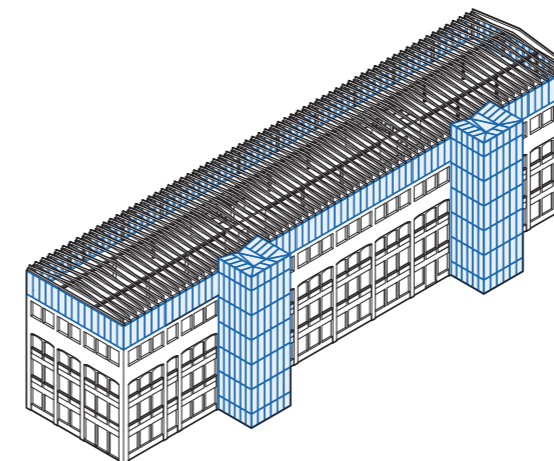
**Step 3**  
The facades are restored to their original character.



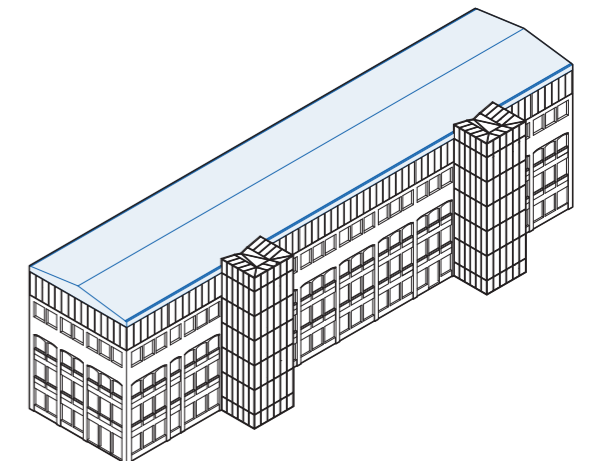
**Step 4**  
Two rows of steel beams are added on the fifth floor.



**Step 5**  
Two rows of steel beams are added on the fifth floor.



**Step 6**  
The new structure is clad in with curtain wall facade.



**Step 7**  
The building is covered with a band-covered zinc roof.

## New Interventions

The major interventions involved in the building's expansion can be outlined in seven distinct steps, each addressing critical aspects of functionality, structural stability, and architectural coherence. The first step entails the construction of two stabilizing concrete towers. These towers serve a dual purpose: they provide vertical shafts for technical installations, such as plumbing and electrical

systems, and function as efficient placements for WC and RWC facilities. In addition to their practical roles, the towers significantly enhance the structural stability of the building. The second and third steps focus on the eastern facade. In the second step, two stair towers are added along the exterior of this facade. By relocating the staircases outside the main building volume, additional interior office

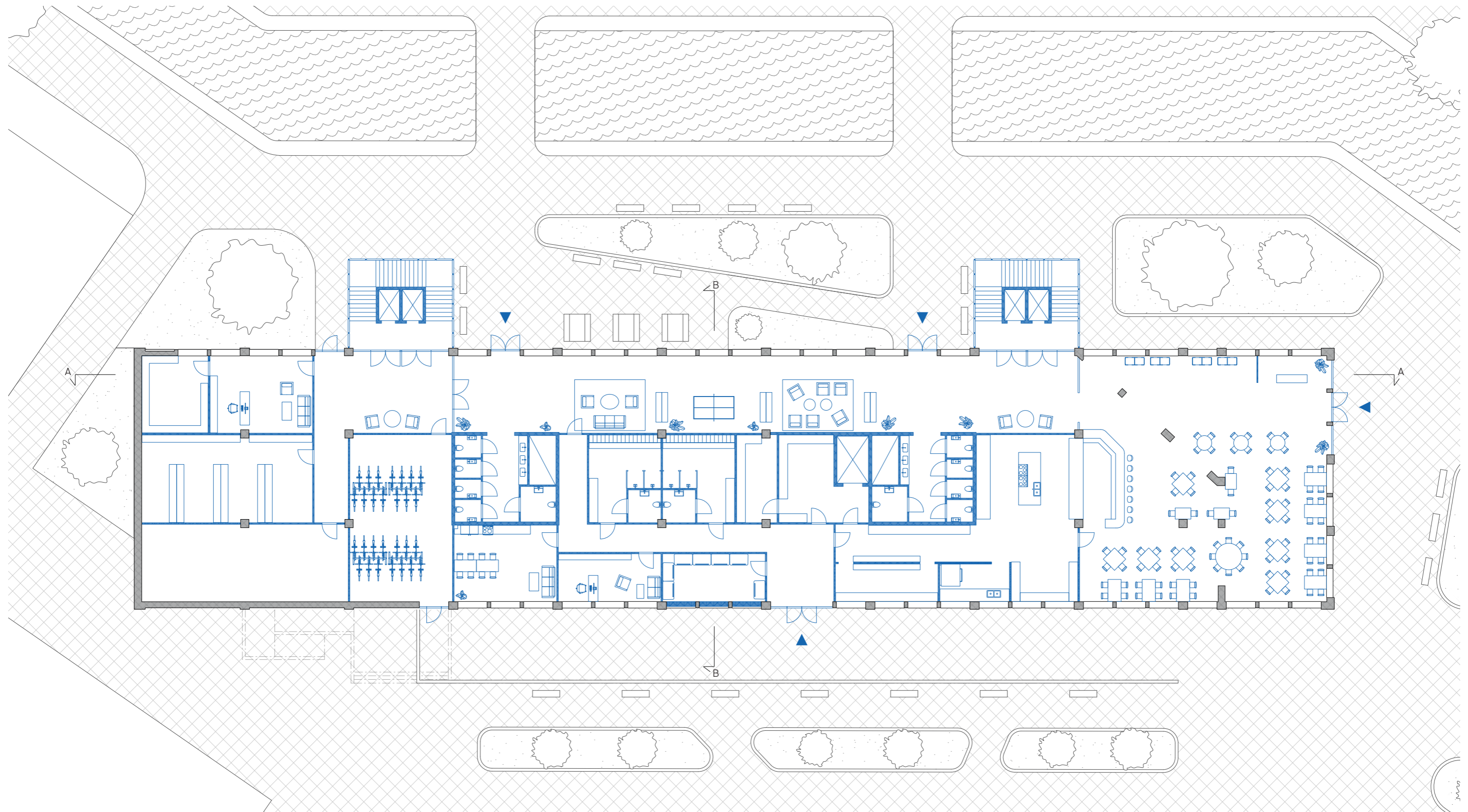
space is created. In the third step, the eastern facade is reinterpreted, divided into three distinct sections, with its design inspired by traces of the original structure and historical drawings. The fourth step involves the installation of two rows of steel beams on the fifth floor, which act as a structural backbone for the upper additions. In the fifth step, a timber framework is constructed atop the steel

beams, forming the primary structure for the building's extension. The sixth step involves enclosing the stair towers and timber framework with a glazed curtain wall facade. This transparent facade frames the stair towers while introducing modernity and maximizing natural light. Finally, the seventh step adds a zinc standing seam roof.

## Program & Space

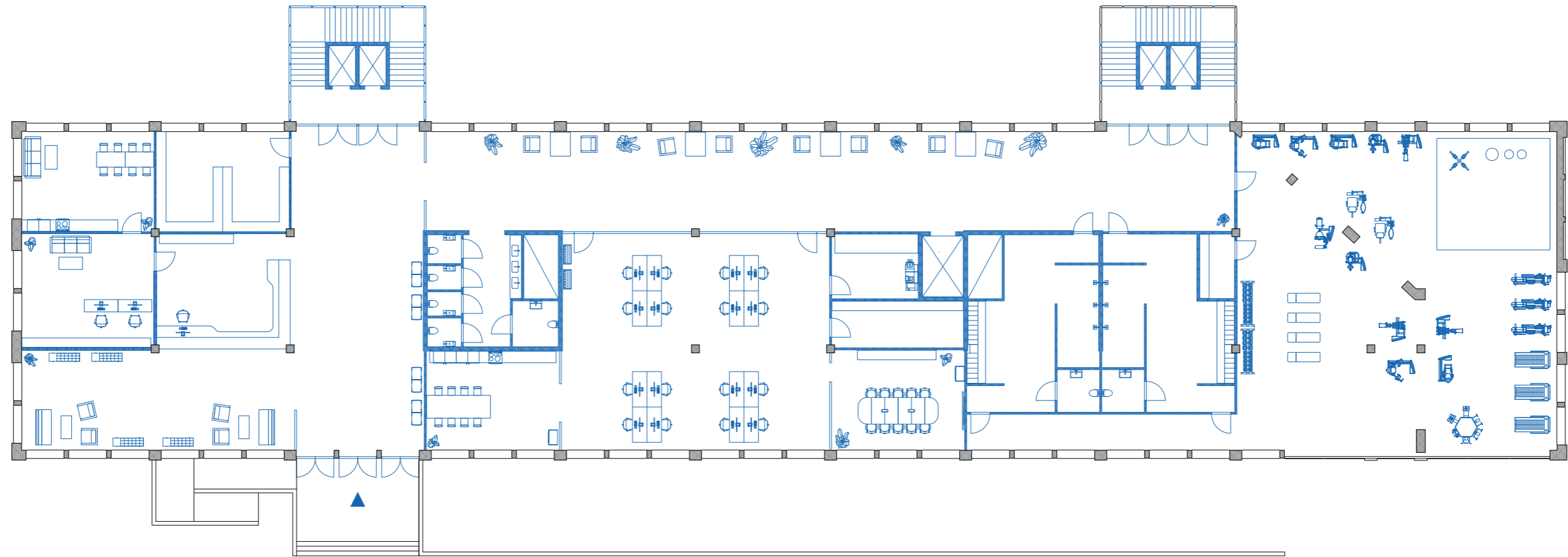
<b>Restaurant</b>		
Seating area	282	
Kitchen	138	
Locker room	59	
Office	37	
Food & beverage storage	36	
Canteen	23	
<b>Lobby</b>		
Reception	42	
Office	42	
Canteen	36	
<b>Office</b>		
Office space	2043	
Canteen	471	
Meeting room	349	
Storage	125	
Telephone room	71	
Copy room	58	
<b>Other</b>		
Social area	1066	
WC/RWC	418	
Conference area	233	
Bike garage	78	
Technical room	73	
Storage	73	
Janitor	36	
Waste	23	





A portion of the ground floor is situated below ground level, thoughtfully designed to house functions that do not require natural light. In contrast, areas that benefit from sunlight, such as the restaurant and the social space, are strategically positioned along the southern and eastern facades. The restaurant opens directly onto the square to

the south, creating a seamless connection to the vibrant outdoor environment. Meanwhile, the social space is intimately linked to a dedicated break area for the building's employees. This tranquil space is beautifully framed by the building itself and the flowing rapids, offering a serene retreat that blends nature and architecture.



The main entrance to the office building is located on the second floor, welcoming visitors into a thoughtfully designed space. Upon passing through the reception and waiting area, one can choose to ascend via the elevator or continue deeper into the building. From here, pathways branch off, leading either to the office areas or to the gym.

Positioned along the southern gable, the gym offers a dedicated space for the building's employees, combining functionality with well-being in a setting designed to support an active work-life balance.

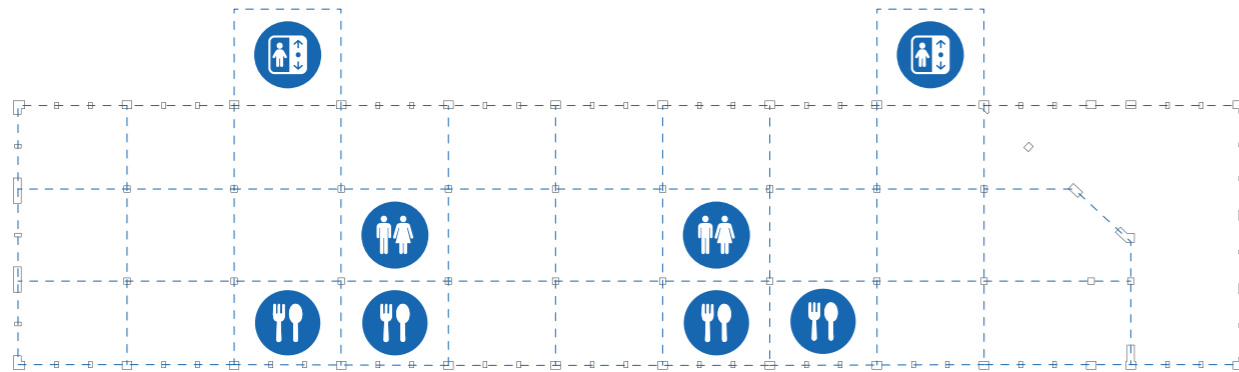
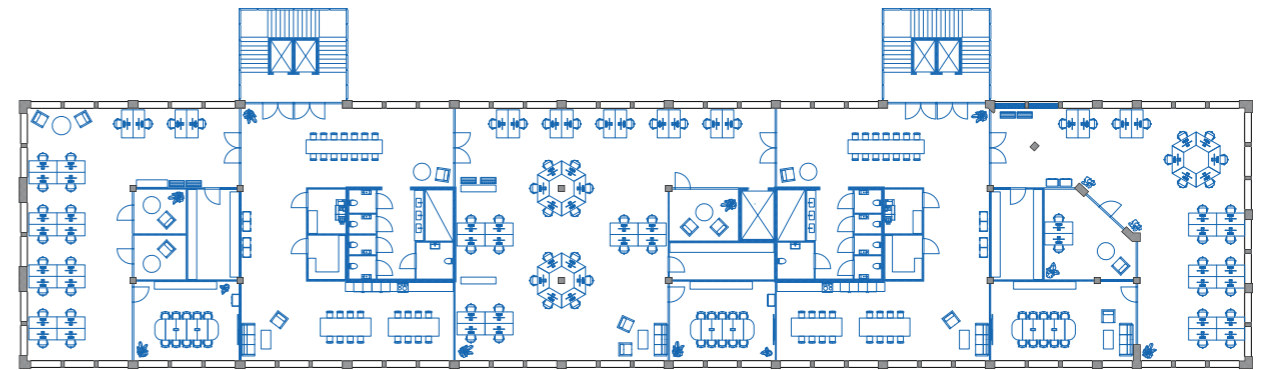


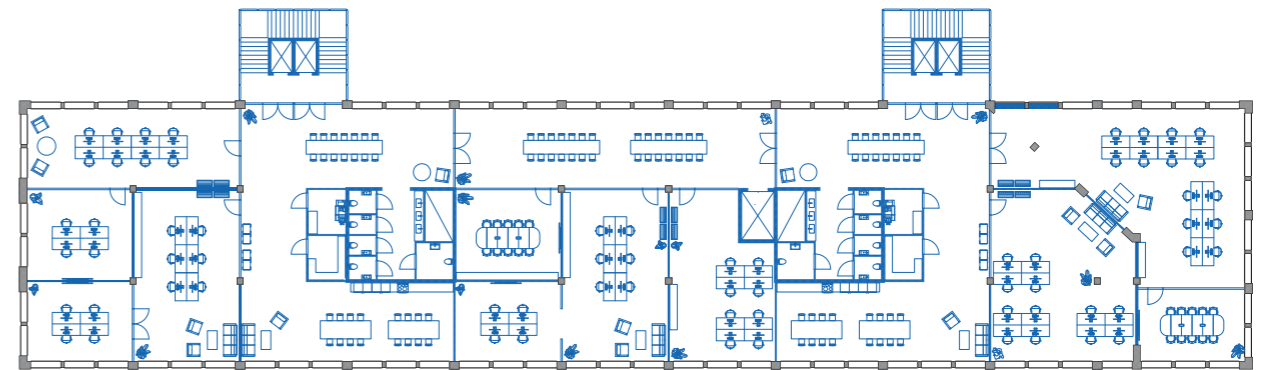
Diagram of modules.

The third floor exemplifies the building's exceptional flexibility. With fixed placements for the WC/RWC facilities, stair towers, and dining area, the remaining office space can be arranged in a variety of configurations. The building's clear column structure further enhances this adaptability, allowing the floor to be divided into multiple smaller office units or fewer, larger spaces with ease. The design is also highly practical, as all water pipes are centralized in the same area across the building's floors. The two stabilizing

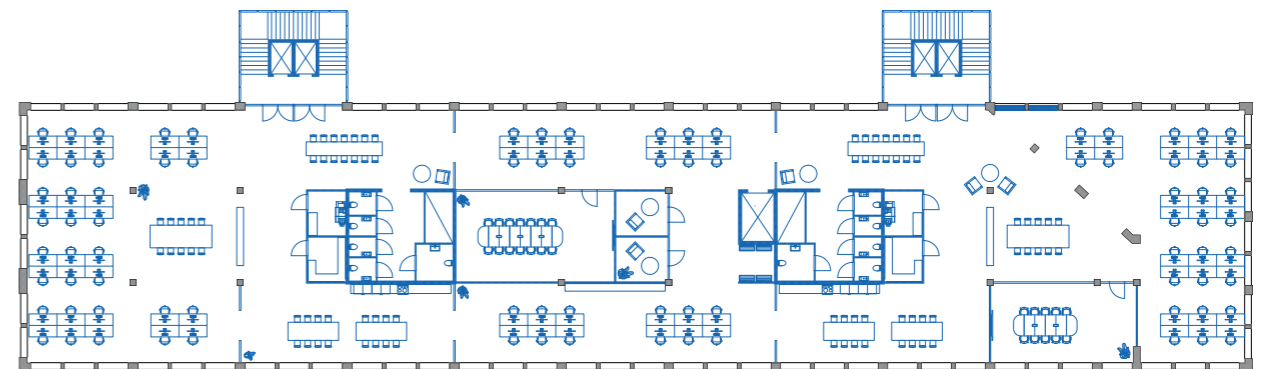
towers house the restroom facilities, while the dining areas are conveniently located adjacent to them. This efficient layout minimizes the need for extensive plumbing installations and optimizes the use of available space. Additionally, the strategic positioning of the stair towers contributes to this flexibility by freeing up more usable floor space. This thoughtful arrangement ensures that the building can adapt seamlessly to a wide range of functional and organizational needs, making it a versatile and efficient workplace solution.



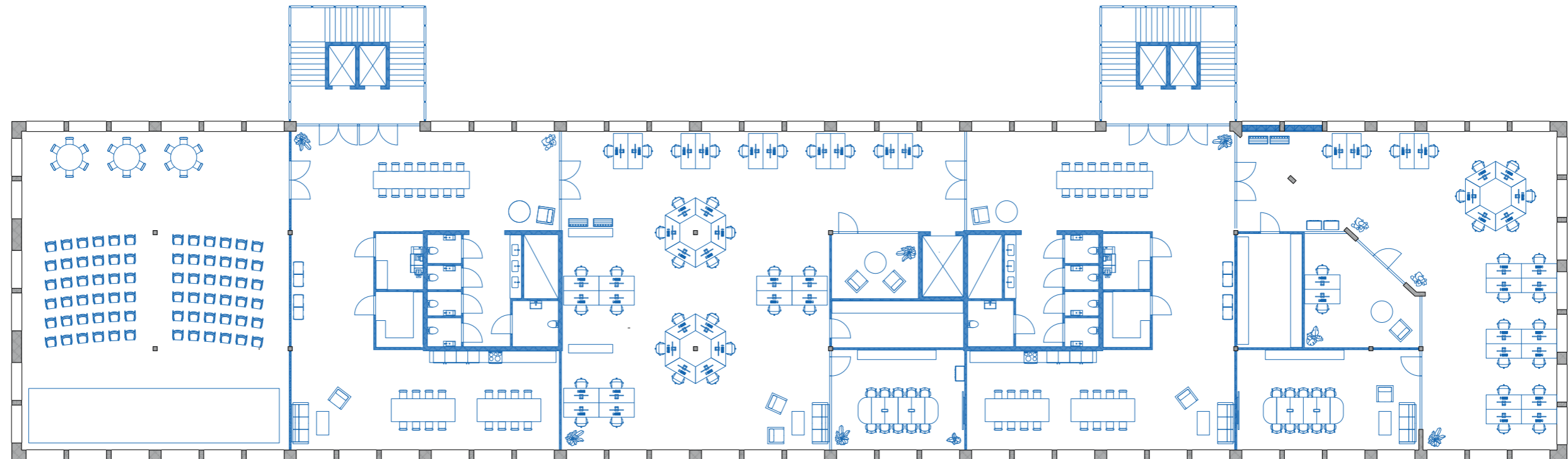
Alternative 1, three tenants.



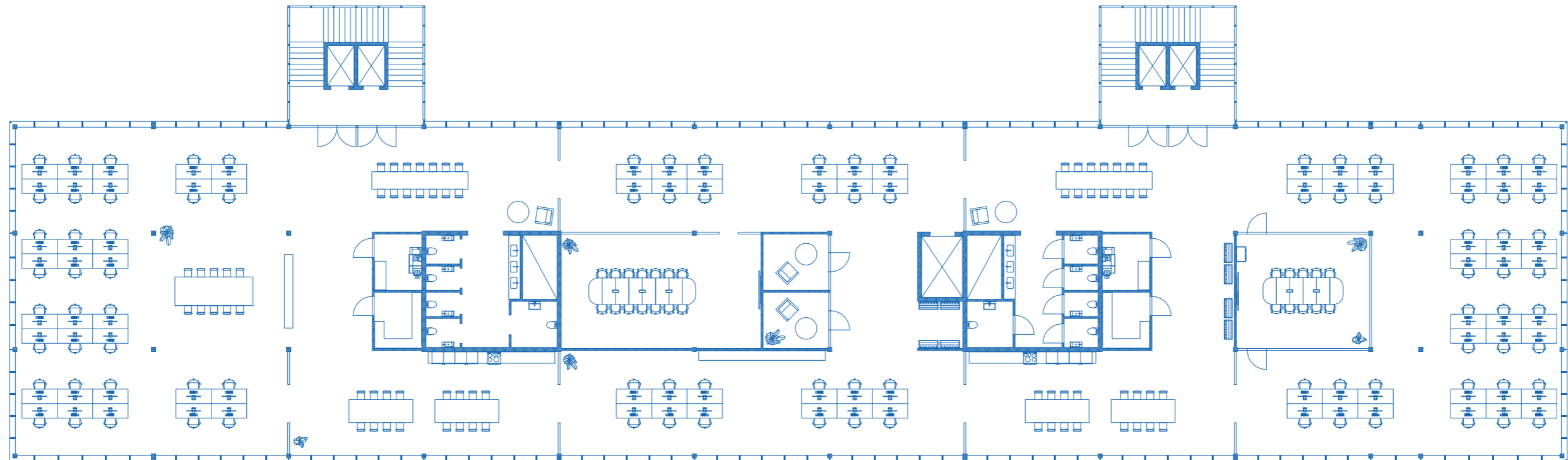
Alternative 2, six tenants.



Alternative 2, one tenant.



The fourth floor mirrors the layout of the third floor, with one notable exception. Toward the northern end of the building, a dedicated conference area provides a flexible space for the employees. This addition enhances the functionality of the floor, offering a professional setting for meetings, collaboration, and shared discussions.



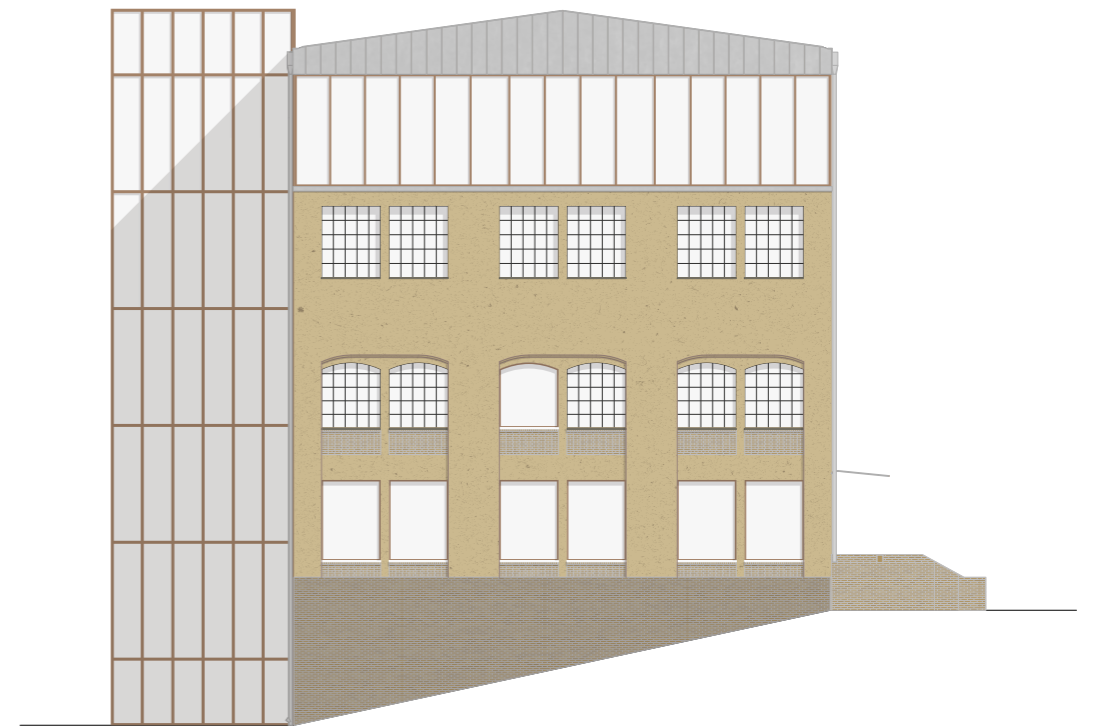
The newly added floor features an open-plan office layout, designed to foster collaboration and flexibility. At its heart lies a centralized core of functions that either do not require natural light or benefit from minimal exposure. This core houses essential amenities, including WC/RWC facilities, telephone rooms, copy rooms, storage spaces,

and glazed meeting rooms. Thoughtfully positioned, these functional spaces enhance the efficiency and usability of the office while maintaining the openness and light-filled atmosphere of the surrounding work areas.



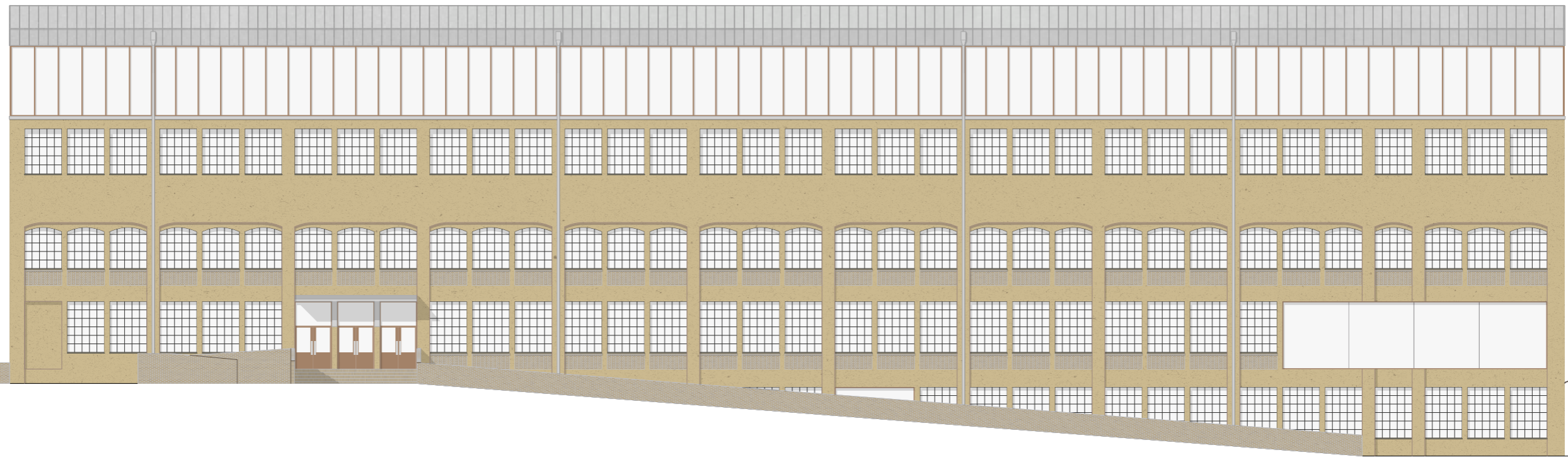
The southern facade welcomes visitors as it opens onto the district's southernmost square, often serving as the first impression for those approaching the building. This facade tells a story of the past and present, with a striking composition that combines the original structure, the modern extension, and the eastern stair tower. At

street level, an inviting entrance leads to the building's restaurant, seamlessly connecting with the flow of visitors and passersby. The original facade has been carefully recreated using historical drawings and photographs, preserving its character while integrating it into the building's contemporary context.



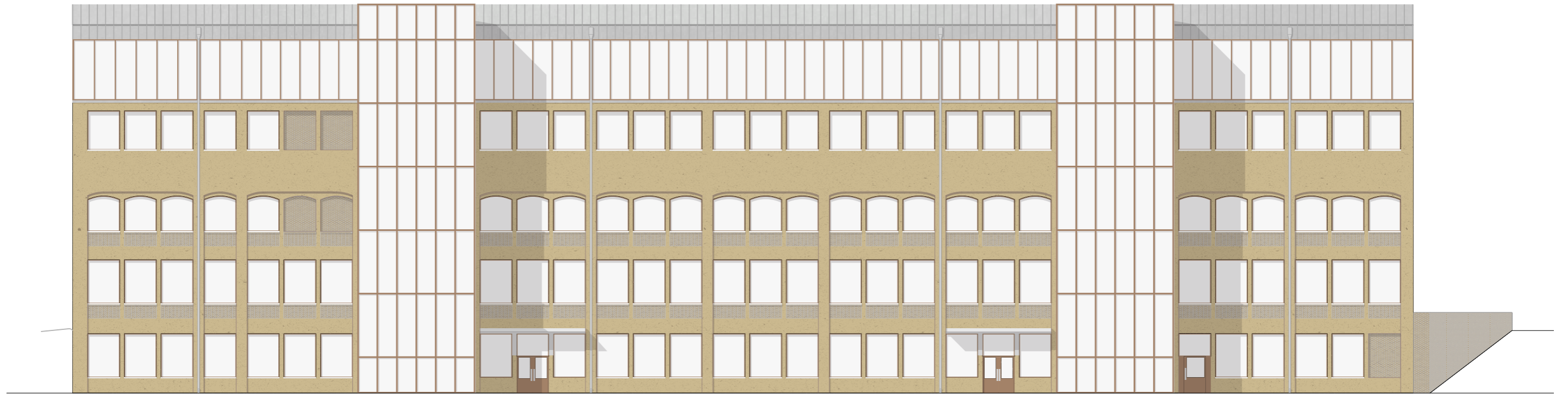
The northern facade adopts a more understated aesthetic, defined by its thoughtful combination of preserved iron-cast windows and newly installed windows with pine frames. This blend of old and new materials creates a harmonious interplay, adding depth and texture to the facade's overall appearance. The preserved iron cast windows retain their

distinctive craftsmanship, while the pine-framed additions introduce a natural warmth, complementing the facade's subdued character. Together, these elements contribute to a balanced and refined design that seamlessly integrates traditional and contemporary details.



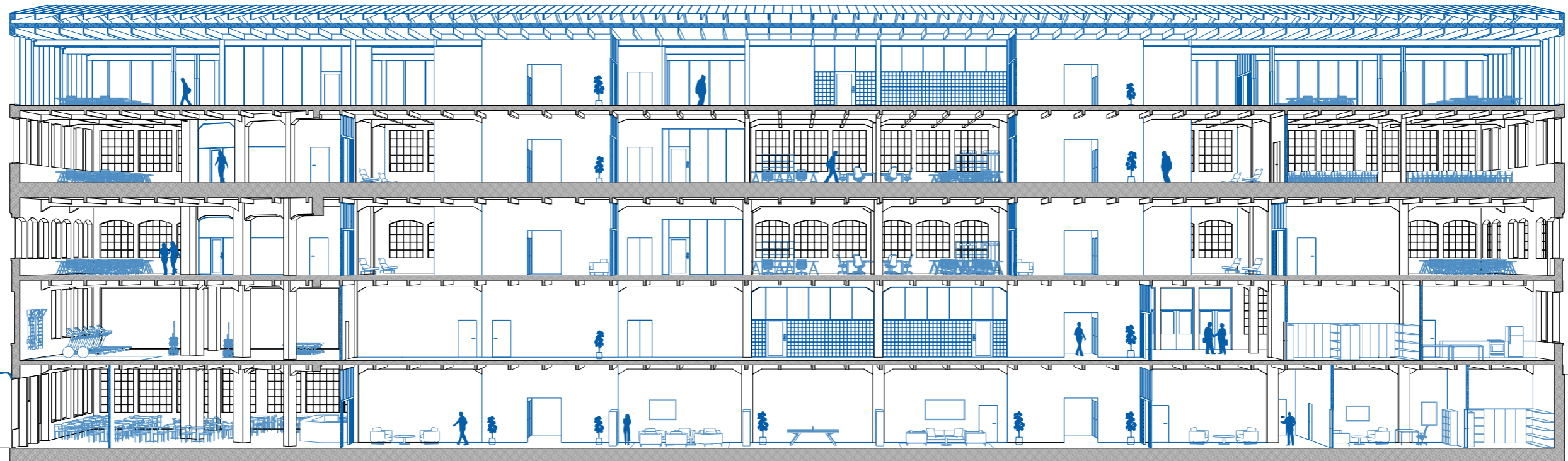
The western facade is the best preserved of them all, with nearly all of its original iron-cast windows remaining intact. Minor modifications have been carefully introduced, including a new entrance with pine-framed doors and a zinc canopy, both designed to complement the existing architecture without overwhelming it. Where the

connecting walkway to Building 110 once stood, a larger window section has been installed, bringing additional light into the space while maintaining a subtle design language. The regularity of the extension above aligns with this approach, subordinating itself to the original structure through a restrained and cohesive expression.

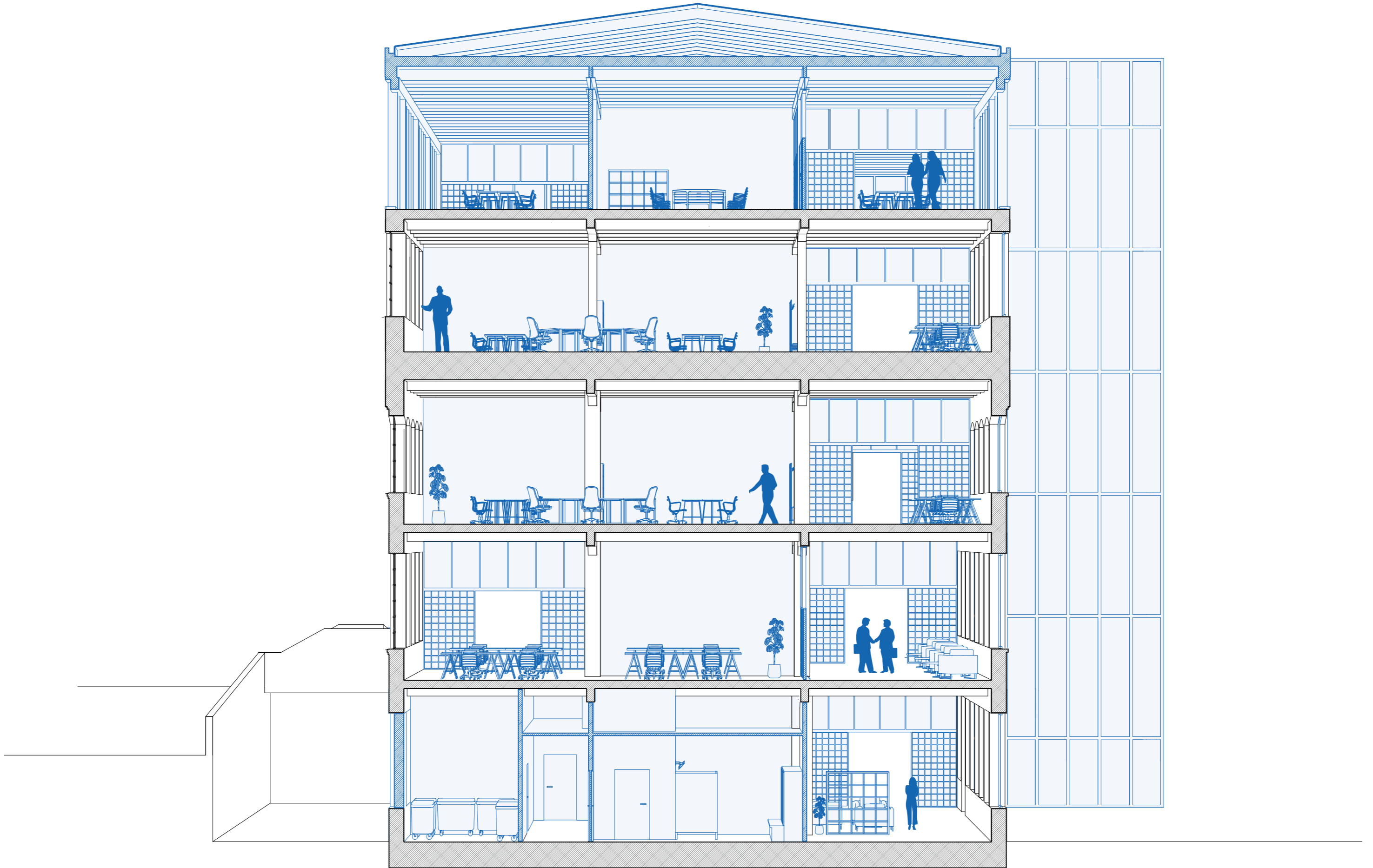


The eastern facade, overlooking the rapids, has been divided into three distinct sections through the introduction of stair towers. Within each of these sections, the original structure of the facade has been reimagined, combining fragments of its historic design with a more modern interpretation that reflects the needs of today. This

reinterpretation draws upon a range of sources, including historical drawings, visible traces in the fragmented remains of the existing facade, and carefully considered design choices. Since the exact details of the original facade remain unclear, the process naturally required an element of creative interpretation.



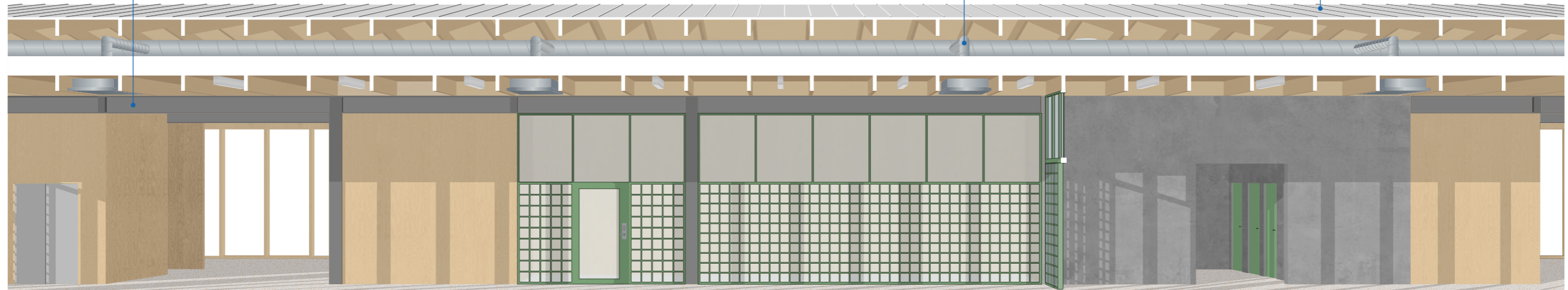
The section cuts through the building's social area, a space designed to serve as both a meeting point and a connective thread linking all the building's functions. It reveals the spatial relationships between the various areas, illustrating how they interact and complement one another within the overall design.



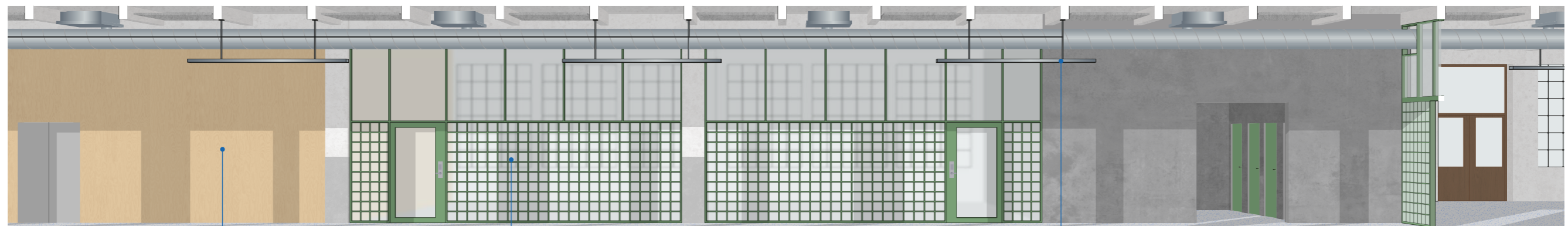
Steel beams combined with timber elements, create a harmonious balance between strength and warmth. The exposed structure highlights the building's industrial character, while the natural wood introduces a sense of texture and contrast.

The ventilation system is discreetly integrated into the ceiling, maintaining a clean and seamless appearance.

The standing seam zinc roof offers both durability and timeless elegance. The rhythmic lines of the seams accentuate the building's clean aesthetic, while the zinc's natural patina develops over time, adding depth and character.



Cut-out view from fifth floor.



Cut-out view from second floor.

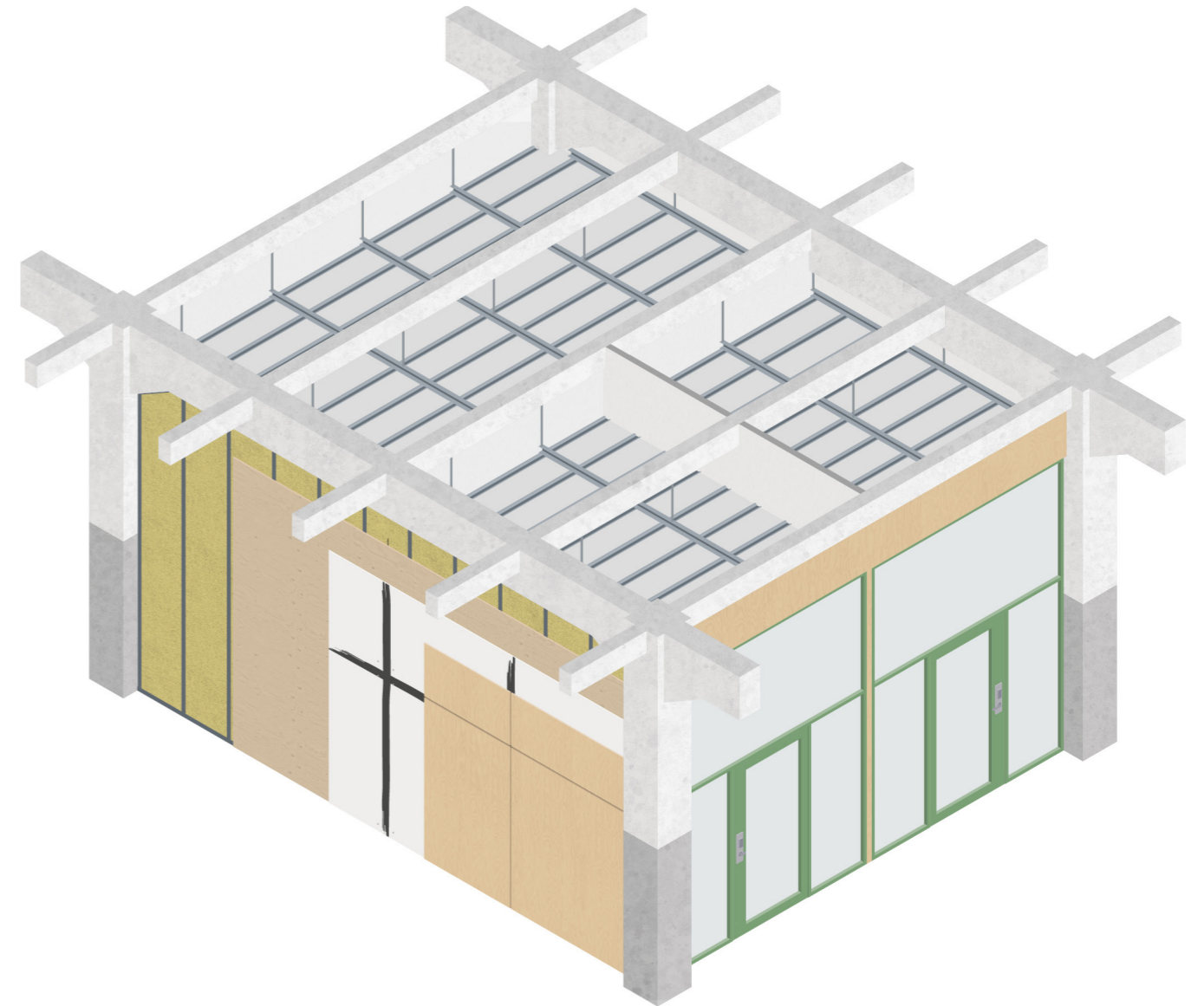
Decorative plywood panels are paired with concrete in the interior, adding warmth and contrast to the space. The natural wood grain stands out, while concealed fastenings ensure a seamless and refined finish.

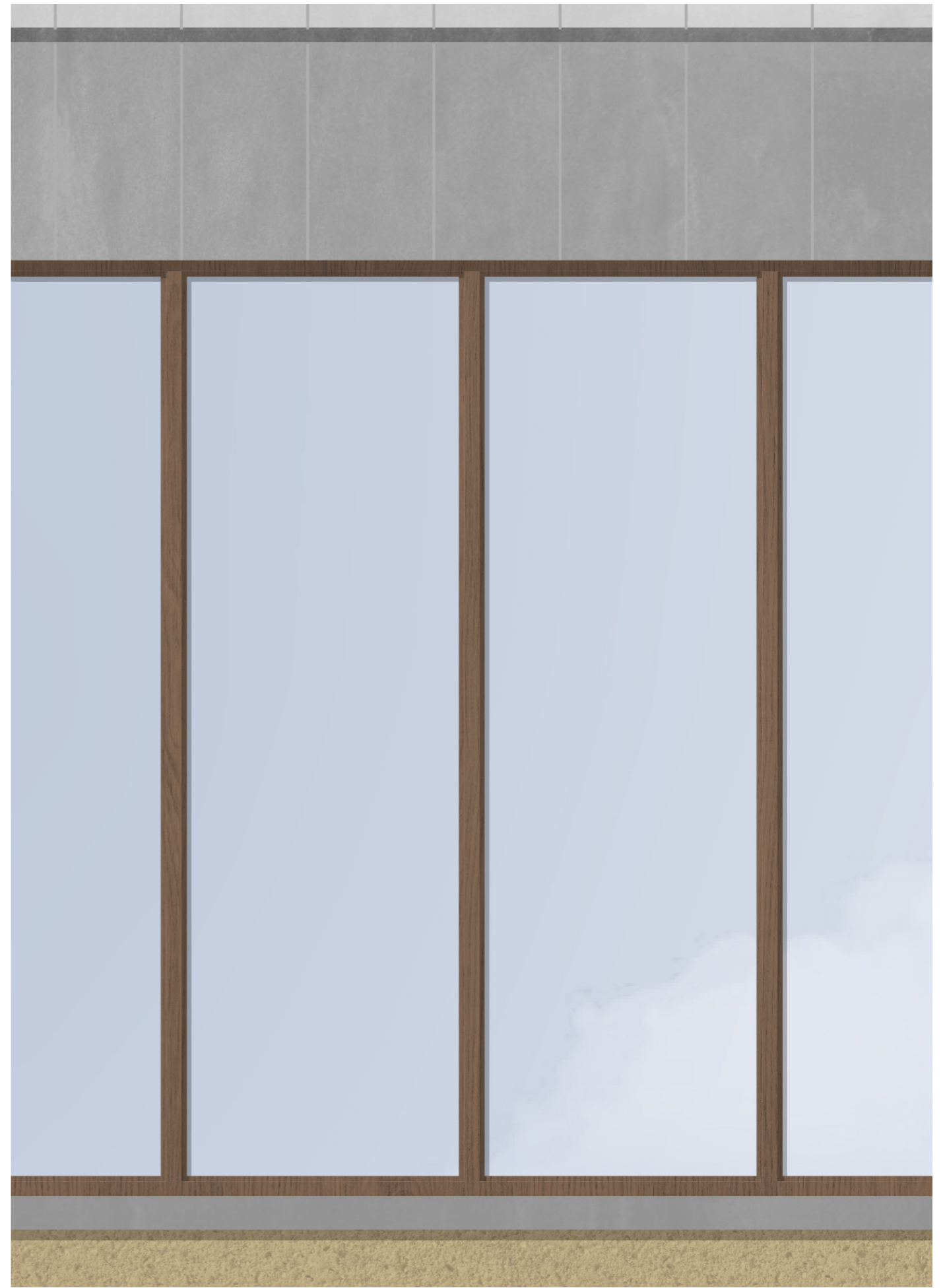
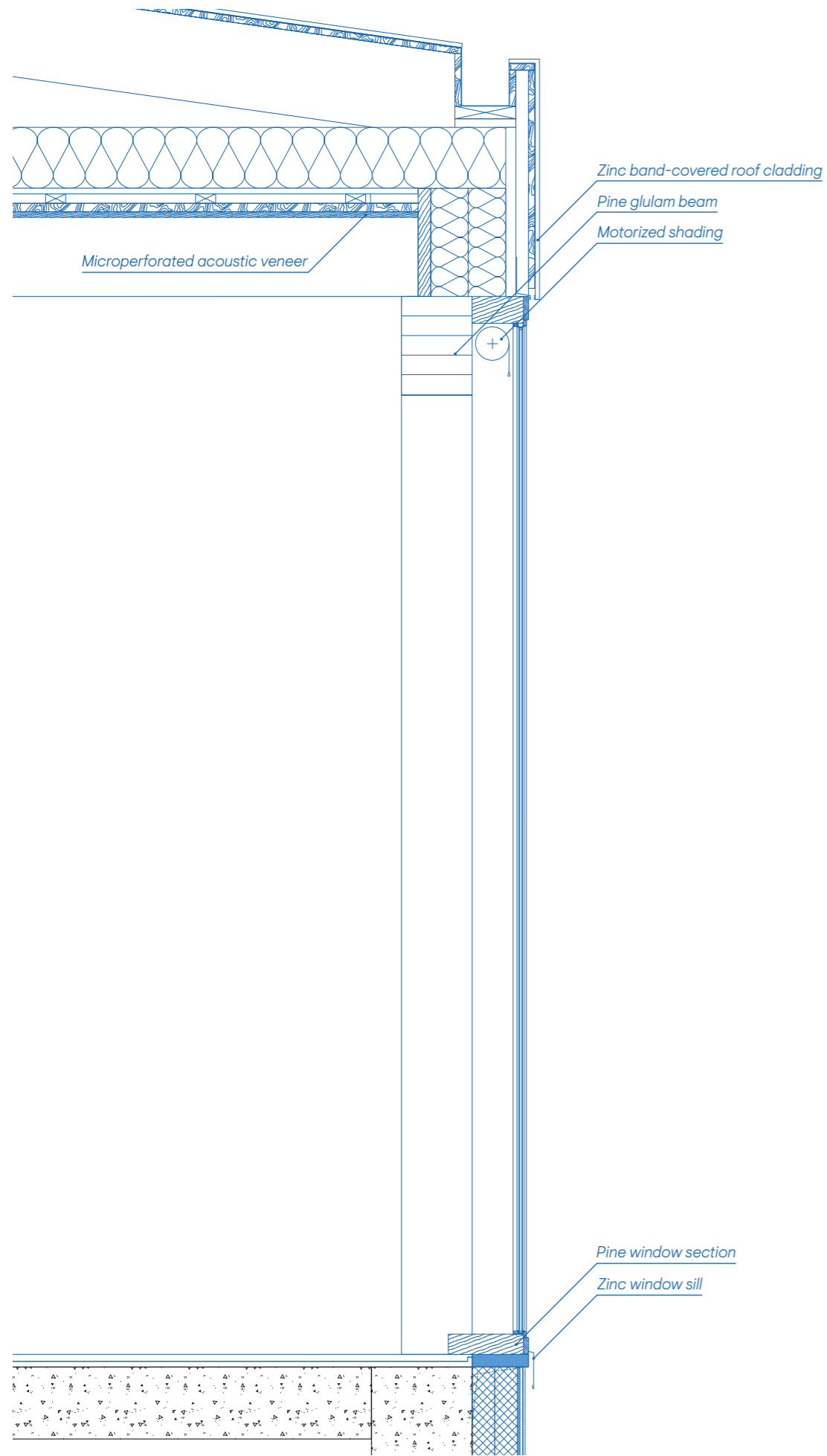
The partition walls feature translucent concrete glass framed by green-lacquered steel, creating a striking interplay of textures and colors while contrasting with the aged concrete columns.

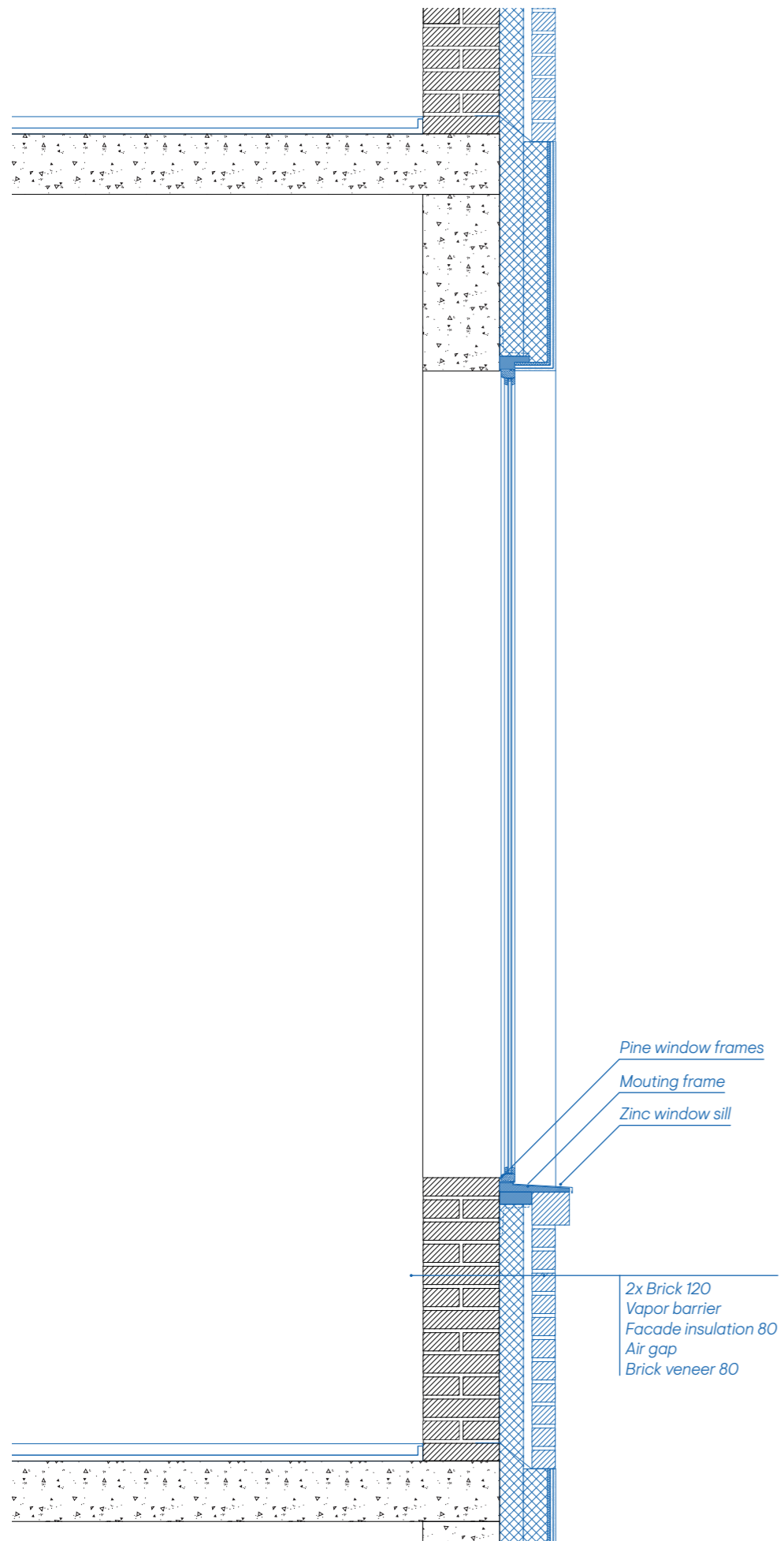
The installations remain exposed in areas where the original concrete structure dominates, emphasizing the raw industrial character of the space. Sleek stainless steel light fixtures complement this aesthetic, adding a refined contrast to the robust concrete elements.

## Interior Wall Construction

The interior walls, attached to the existing concrete column structure, are built using a layered construction for both functionality and design. Steel tracks are secured to the columns and slabs, providing the framework for the walls. Within this framework, sound insulation is installed to ensure effective noise reduction and compliance with acoustic standards. The walls are then reinforced with construction-grade plywood, followed by a layer of gypsum board to meet fire safety regulations. To complete the design, decorative plywood panels with concealed fastenings are applied on top. The gypsum board is painted black in the gaps between the decorative plywood panels, creating a polished and cohesive aesthetic.







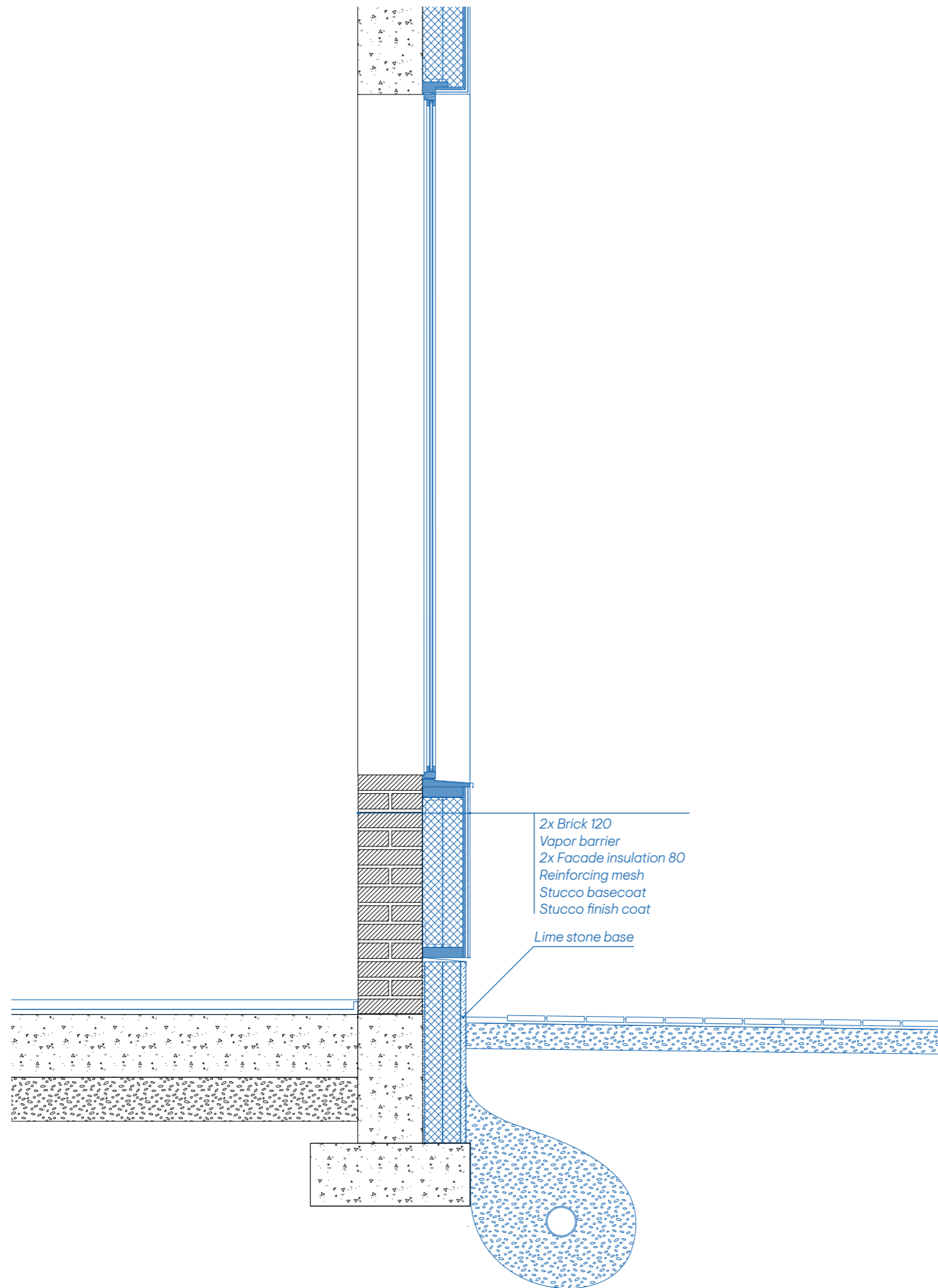




Illustration of the restaurant on the ground floor.



Illustration of office space on the fifth floor.

5.

DISCUSSION

## Discussion

Revitalizing and adapting a cultural heritage building to meet contemporary needs requires careful consideration of both its historical significance and modern functionality. This thesis explores the intricate balance between heritage conservation and functional modernization, highlighting the challenges and opportunities inherent in the process of adaptive reuse.

During the initial design phase, one of the main challenges emerged: the first proposal failed to fully align with the building's cultural and structural identity. This prompted a complete redesign, which, although demanding, provided an opportunity for critical reassessment. The final design reflects a cohesive vision that respects the building's historical context while accommodating modern requirements.

Flexibility is a central aspect of the final proposal, allowing the building to serve diverse functions and adapt to future needs. This adaptability contributes to environmental sustainability by extending the building's lifecycle, as well as cultural sustainability by maintaining its relevance and connection to the community. The deliberate decision to limit

the full utilization of building rights reflects a commitment to preserving the integrity of the original structure. By adopting a straightforward and restrained form, the new design complements rather than overshadows the historical architecture. Material choices and detailing were thoughtfully selected to ensure a harmonious integration between old and new elements.

Moreover, the functions and layout were carefully adapted to align with the existing structural framework, reinforcing the coherence between past and present. Technical solutions were tailored to the building's unique characteristics, enhancing functionality without compromising its architectural value. These deliberate choices highlight the importance of maintaining a visual and structural hierarchy that prioritizes heritage while addressing contemporary needs.

This thesis demonstrates the delicate balance required in adaptive reuse, showing how thoughtful design and sensitive adaptation can transform cultural heritage buildings into spaces that are both functional and meaningful for today and the future.

*I would like to express my sincere gratitude to my supervisor, Catharina Dahl Plamér, for providing valuable feedback and guidance throughout this project. Your expertise has been instrumental in shaping the outcome of this work.*

*I also extend my thanks to the stakeholders involved, whose contributions have greatly enriched the project by providing essential insights and resources.*

*Finally, I am grateful to my examiner, Mikael Ekegren, for your constructive feedback and thoughtful evaluation, which have helped refine this thesis.*

6.

**BIBLIOGRAPHY**

## Literature

Arfa, P., Zijlstra, H., Lubelli, B., & Quist, W. (2022). Adaptive reuse of heritage buildings: From a literature review to a model of practice. *Journal of Architectural Conservation*, 28(2), 150–170. <https://www.tandfonline.com/doi/full/10.1080/17567505.2022.2058551>

Forsåker (n.d.) En kraftkälla för århundraden  
<https://forsaker.se/sample-page/om-forsaker/>

Lindholm restaurering AB. (2015) Kulturhistorisk beskrivning och byggnadshistorisk inventering.  
<https://www.molndal.se/download/18.927f3ef15af87cd7b0407a/1553600427419/Kulturhistorisk%20utredning%20Forsaker%2020151124.pdf>

Riksantikvarieämbetet. (2017). Räkna med kulturarvet: Kulturarvets bidrag till en hållbar samhällsutveckling (2:a rev. uppl.). <https://www.raa.se>

## Images

Images and drawings without reference have been developed by the authors of this thesis.

Fig 1. Digitalt Museum. (n.d.). Papyrus fabriksområde från syratornet: Vinterbild. Retrieved 2024-12-13, from <https://digitaltmuseum.se/O21015962047/papyrus-fabriksomrade-fran-syratornet-vinterbild>

Fig 2. Digitalt Museum. (n.d.). Industriområde med industribana. Retrieved 2024-12-13, from <https://digitaltmuseum.se/O21018183427/industriomrade-med-industribana>